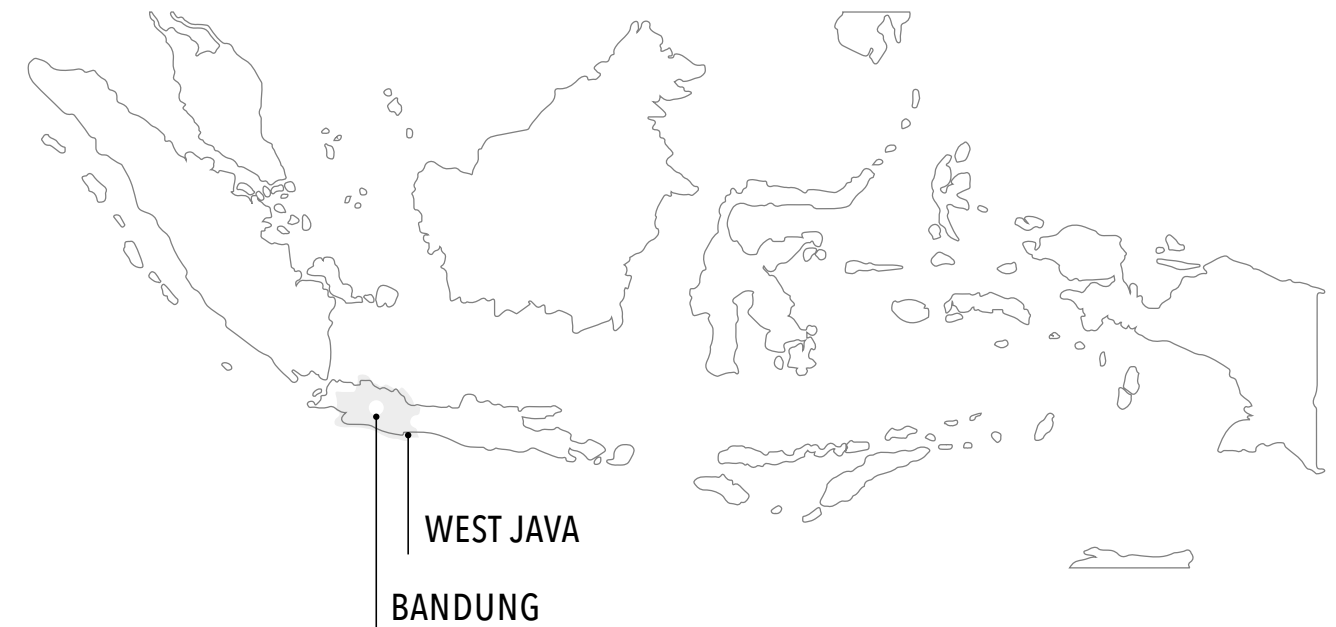




HERITAGE BASED ADAPTIVE REUSE OF HOTEL SWARHA



MARY LOU VAN DEN BERG, MSC
Delft University of Technology,
Architectural Engineering,
Graduation studio

MIG PRESENTATION
Date: April 19, 2020



CHALLENGE



Bandung, located in West Java, Indonesia, is a young city with a rich history. The economy of this city is growing exponentially, which causes a great demand for architectural development.

When I visited the city, I was fascinated by the architectural approach to modern architecture. My favourite example is this new shopping mall: It is 12 stories high and has no windows.

CHALLENGE

Yet, all over the city, many historic buildings remain vacant...

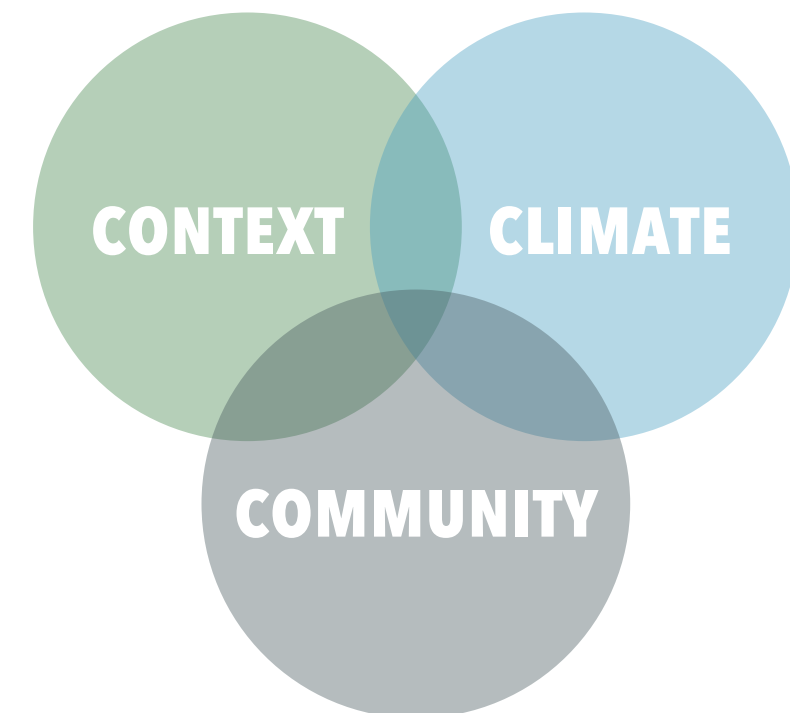
The challenge of urban renewal in Bandung encompasses the ironic dilemma of *unsustainable architectural development*, with a limited use or benefit at the urban level, in contrast to the *many abandoned historical buildings*, which are specifically designed for the tropical climate.





OBJECTIVE

The main objective, resulting from this problem statement, is to revitalize a district in Bandung by means of the adaptive reuse of abandoned heritage and passive climate systems. My personal ambition is to empower the local culture of fashion craftsmanship and create a sustainable alternative for shopping in the city centre of Bandung. Designing both a fashion incubator and a public market has facilitated this sustainable alternative.



CASE STUDY

This is Hotel Swarha. Shown in its original condition, the building is built in the 1950s during the declaration of independence to accommodate famous journalists. On the ground floor a tailor is located, which is a remnant of 'Paris of Java'; a reference to the colonial trade economy.

The building itself is highly modernist, over-dimensioned and its passive climate system still plays an important role to the comfortable indoor climate. It is located in the middle of the city centre, adjacent to the main square and the largest mosque in the city.

Unfortunately, *this building has been vacant for over 30 years...*



HOTEL „SWARHA“ BANDUNG



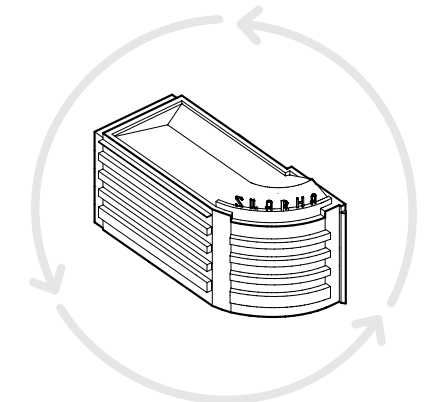
A PERFECT EXAMPLE OF ABANDONED HERITAGE

Instead of designing something from scratch, I decided to re-use this abandoned building and make a design that shows how an optimal result can be achieved with minimal interventions, in order to set an example for future projects.



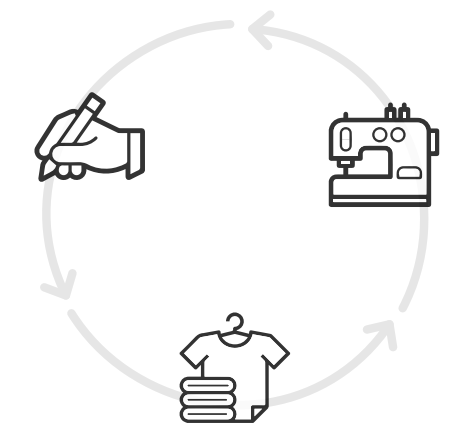
AMBITION

REUSE
the building and its technique



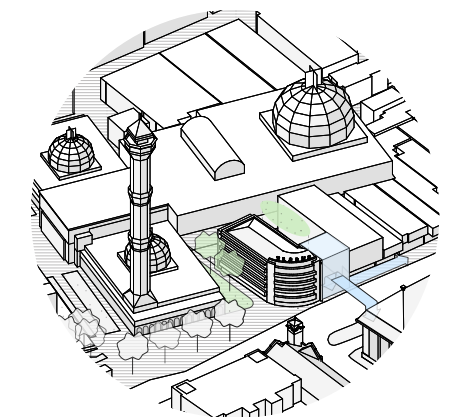
+

REDEFINE
the outdated program



=

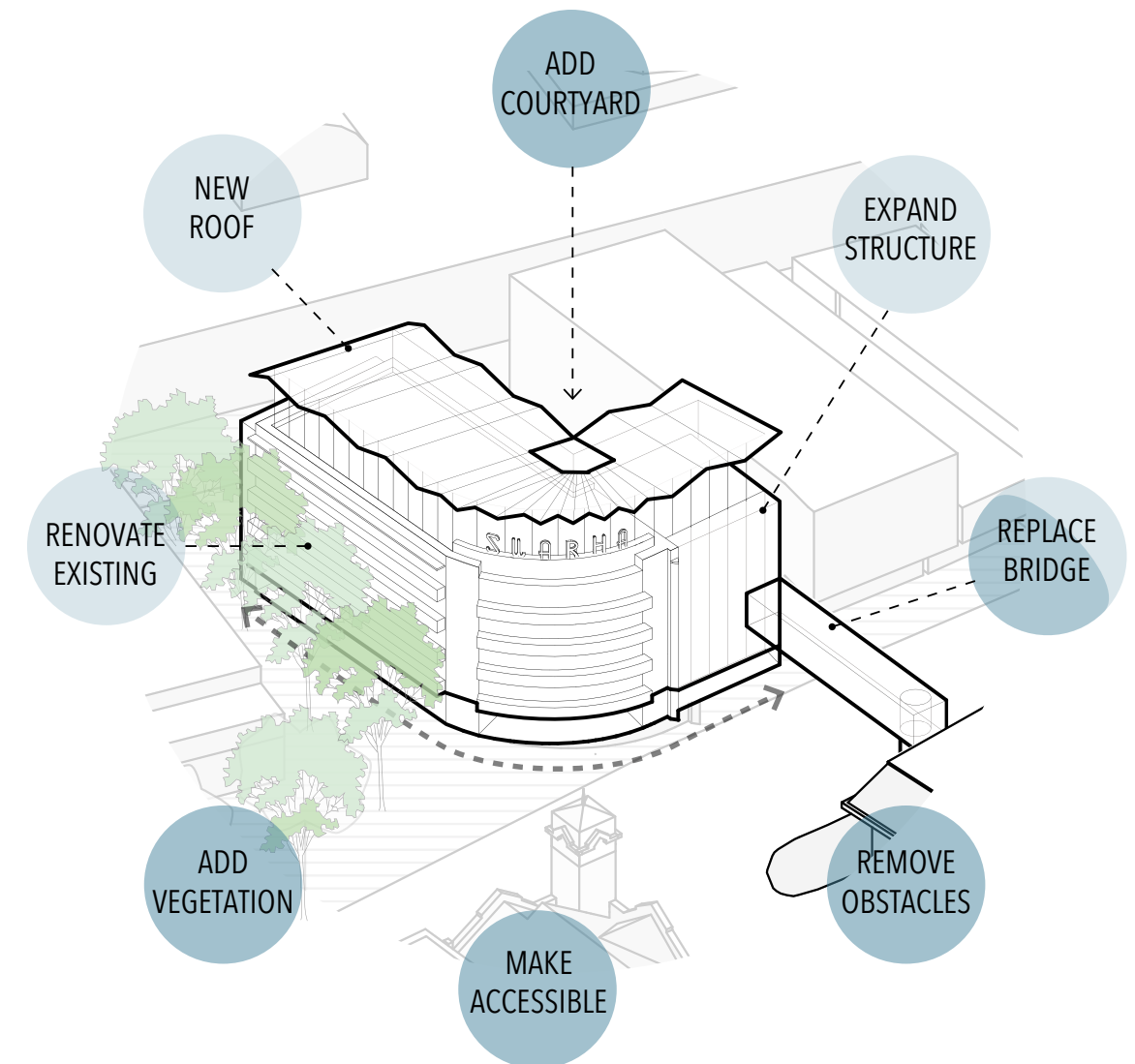
REVITALIZE
the context as a result





DESIGN APPROACH

Focusing on the *context, climate* and *community* a mixed used building is designed, hosting education, production and consumption in one complex. This holistic approach is the result of a series of significant interventions on both a urban and architectural level.



CONTEXT

EXISTING

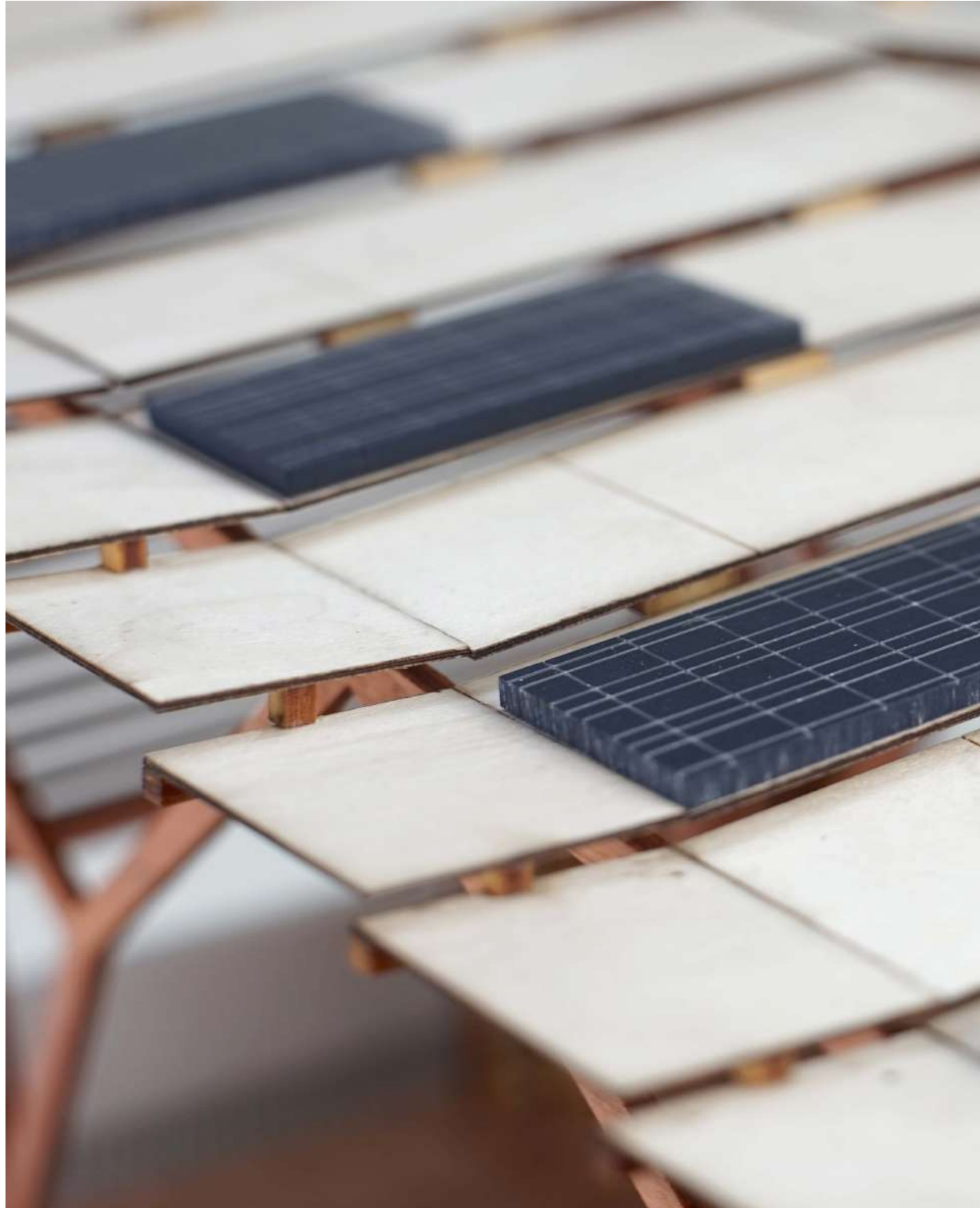


DESIGN



The now isolated building will once again become visible and accessible from both sides of the busy street and in return will stimulate economic development in the neighbourhood.

CLIMATE



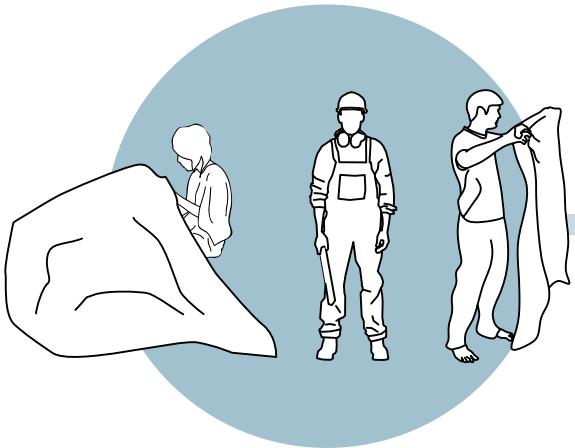
The new roof is made of an open timber structure and serves as a sunshade and water and solar energy collector.

FASHION COMMUNITY



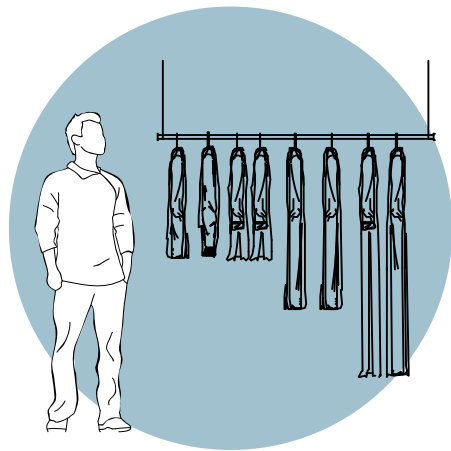
EDUCATION

+4 + 5



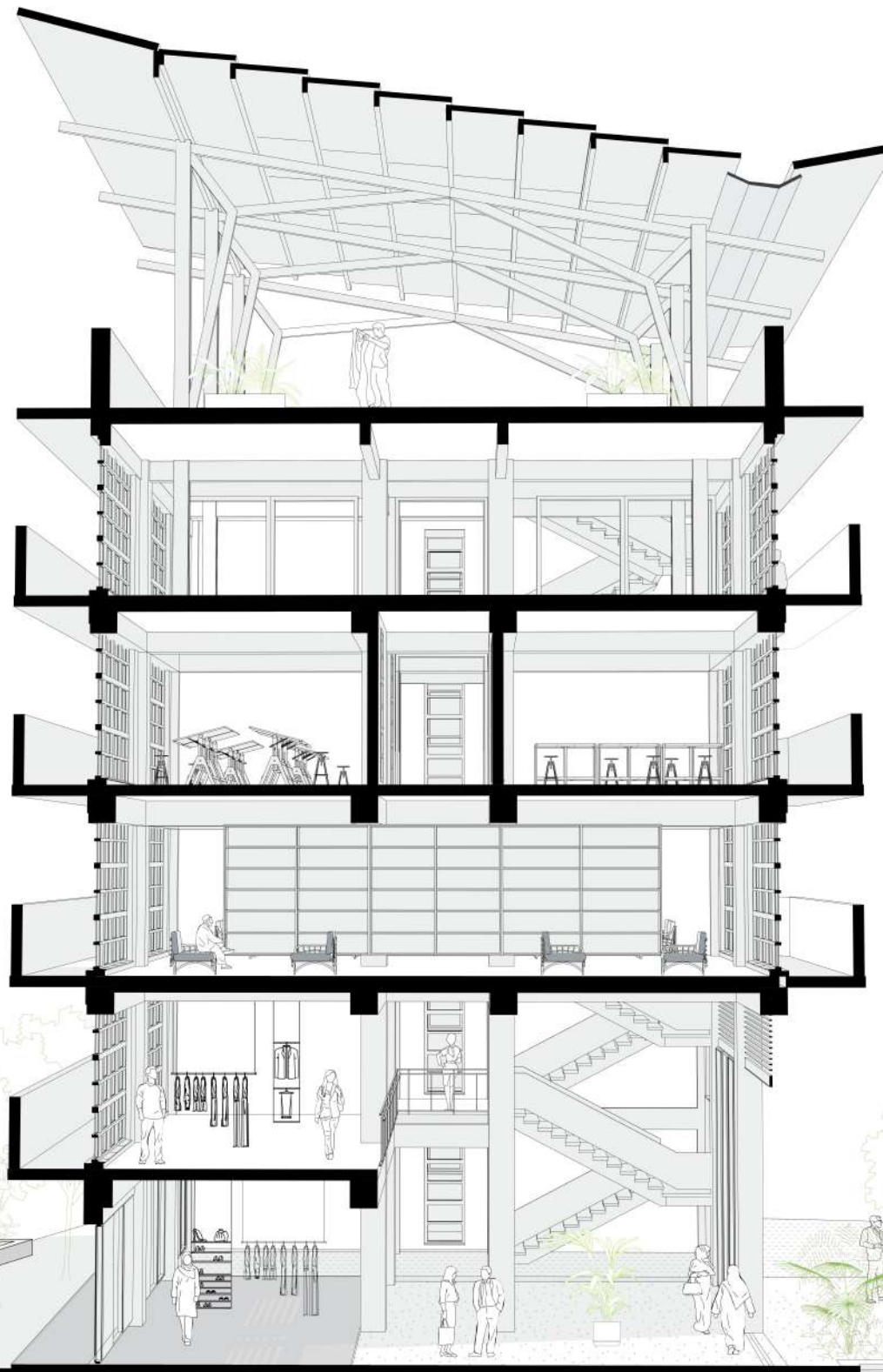
PRODUCTION

+2 + 3



CONSUMPTION

GF + 1



Locally a lot of clothing is manufactured, but it is difficult for young people to start their own business. The combination of an educational fashion institution and a commercial market hall for young entrepreneurs is the basis for this fashion incubator. The focus lies on sharing knowledge, encouraging new sustainable initiatives and supporting economic development in the local fashion industry.

The programme stimulates a two-way economy. A top-down approach by the educational institution is reinforced with the bottom-up approach by young entrepreneurs.

FASHION COMMUNITY



The plinth is open for public and leads through the fashion market to the peaceful courtyard, allowing pedestrians to rest during a hectic day.

The incubator program on the upper floors in the renovated part of the building focuses on education and production. This includes use of meeting rooms, design studios, (co-) working spaces and machines in the workshop, allowing students to develop their artistic skills and set up a successful business.

FASHION COMMUNITY



SUMMARY

PROBLEM STATEMENT

CONTEXT

There are many vacant historical buildings

CLIMATE

Modern high-rise development is often unsustainable

COMMUNITY

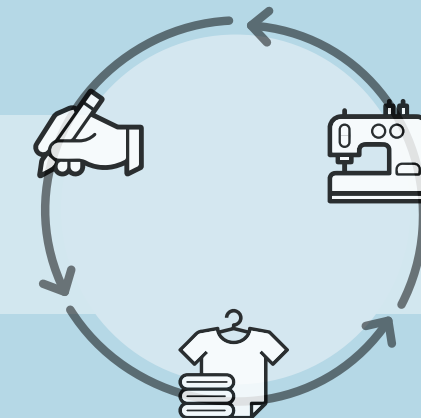
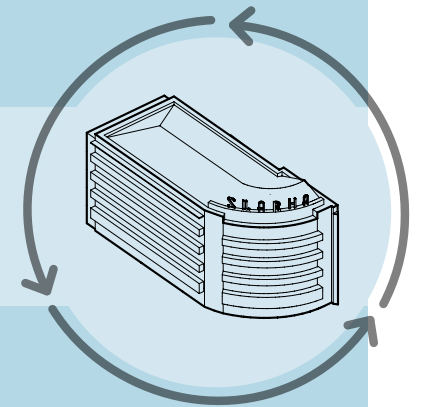
Innovative initiatives are inaccessible

OBJECTIVE

In order to revitalize the urban area of Alun Alun, shared heritage and its passive climate systems will be reused, empowering the local culture of fashion craftsmanship

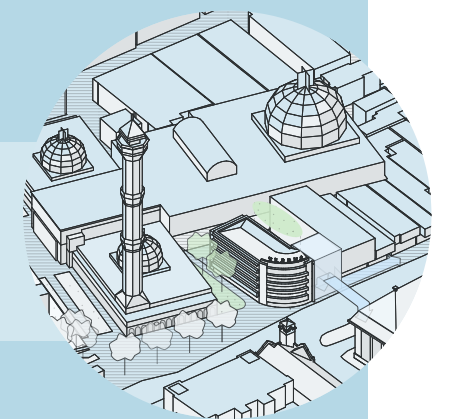
AMBITION

REUSE
the building and its technique



REDEFINE
the outdated program

REVITALIZE
the context as a result







IMPACT ON A LARGER SCALE



This strategy on a large scale has a positive effect on the building industry, because there will be a drastic reduction in waste and thus a decrease in costs.



Is it of great historical importance, as historic buildings and building techniques are preserved and revalued, which serves as a source of inspiration for future projects.



Is of economic importance, as it creates diverse opportunities for young entrepreneurs all over the world.

SUWARHA

THANK YOU