

CURTAINS

An acute and rehabilitative care
center for sexual assault victims

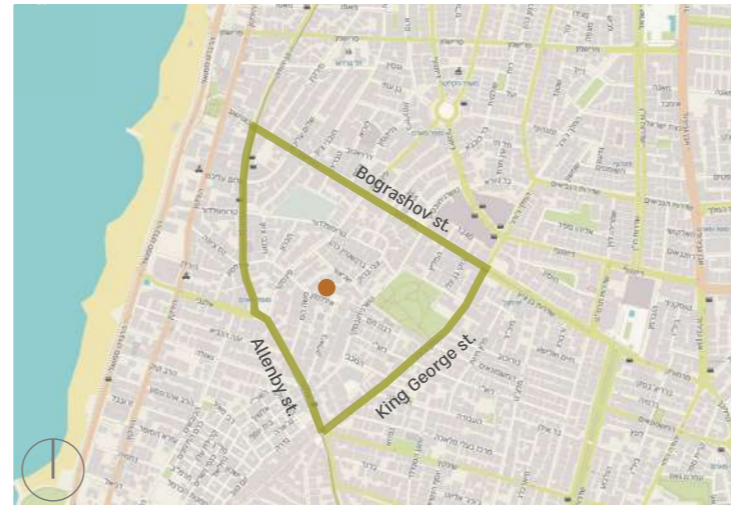
Hadass Rozental

Interior Design Studio | Arch. Ronnie Alroy





Liebling House is a Bauhaus-style modernist building in Tel Aviv, designed by architect Dov Karmi and built in 1936.



The house is located in a quiet yet central neighborhood, bordered by busy urban streets.



Nowadays, the building's location in the neighborhood enables, and invites, the existence of public functions in a place which is both accessible and intimate.

In Israel, **1 of every 7 women** experienced a sexual harassment. More than a third of these cases are rapes, where the attacker is an acquaintance from the close vicinity.

In today's reality, seeking treatment or filing a complaint usually involves a "second trauma", where the victims encounter the system's insensitivity, while having to navigate themselves, at the height of their distress, between self-help and law enforcement.

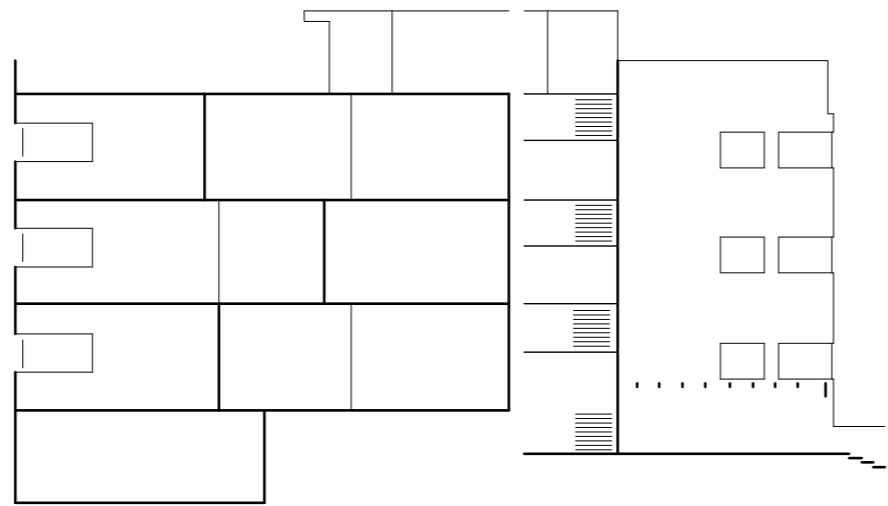
As a result, some choose not to seek aid.



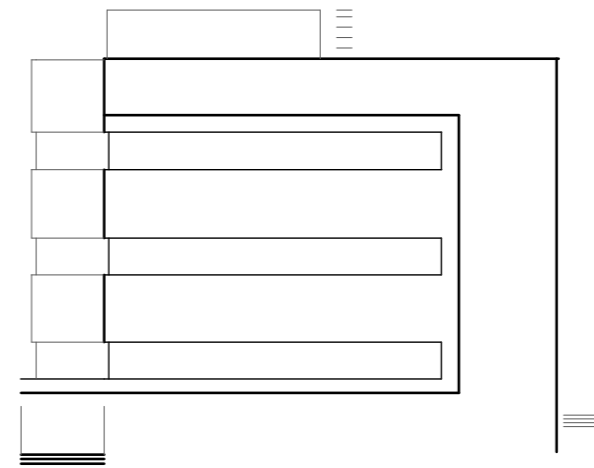


Responding to threats from the domestic environment, **Curtains** is located between houses, accessible and open at all times.

The staff includes a medical team, social workers and psychologists.



Liebling house's nautical and sheltered facades separate between the residents' private world and the street, allowing light and fresh air through while maintaining maximum privacy.



The anonymity it allows its users, along with its rigid, minimalist shell, served as important elements when developing the design concept.

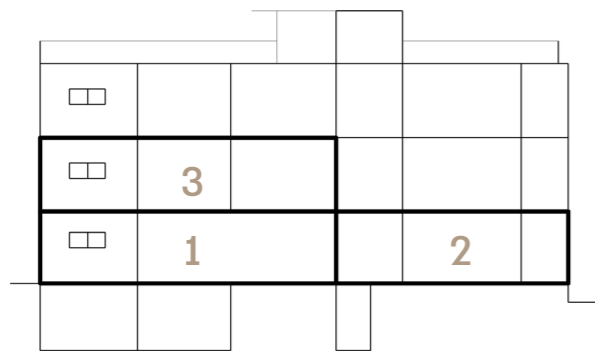


Harnessing the building's elements for the program, the **design concept** is constructed from the preserved original exterior walls as a protecting shield, and a tender, softly embracing interior.

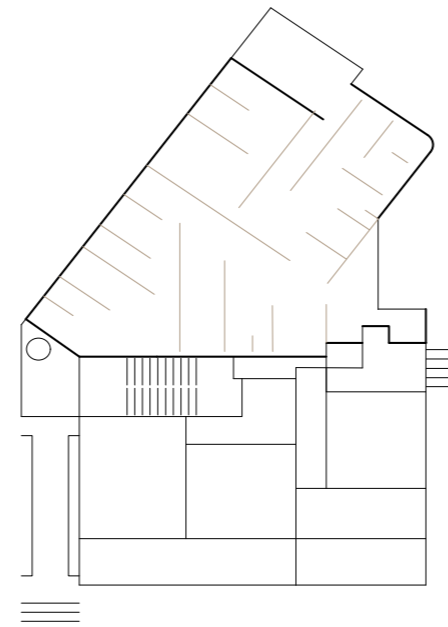


The **materials** inventory includes the original concrete walls, floor and openings, along with textile for interior partitions.

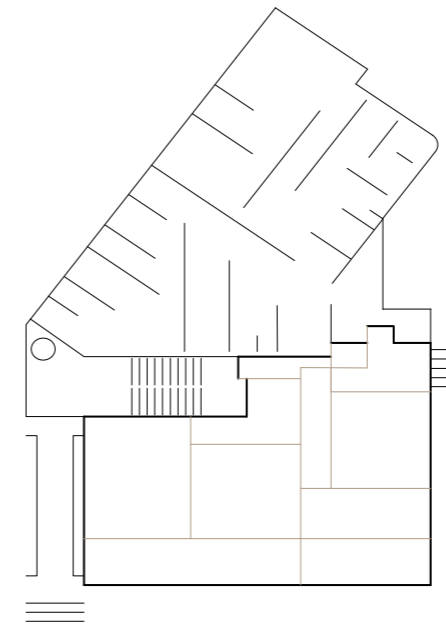




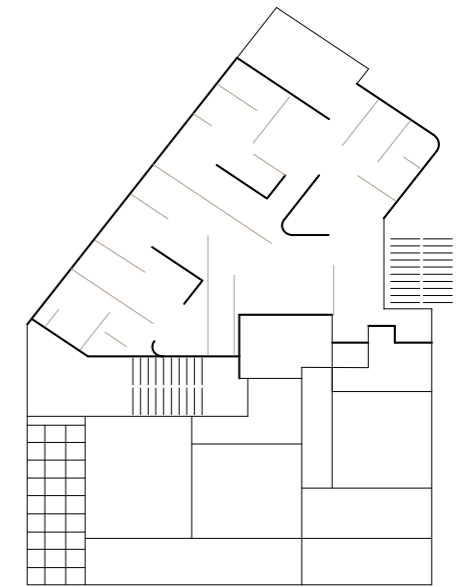
While the rest of the building maintains its residential functions, the center's master plan corresponds to the program's care stages:



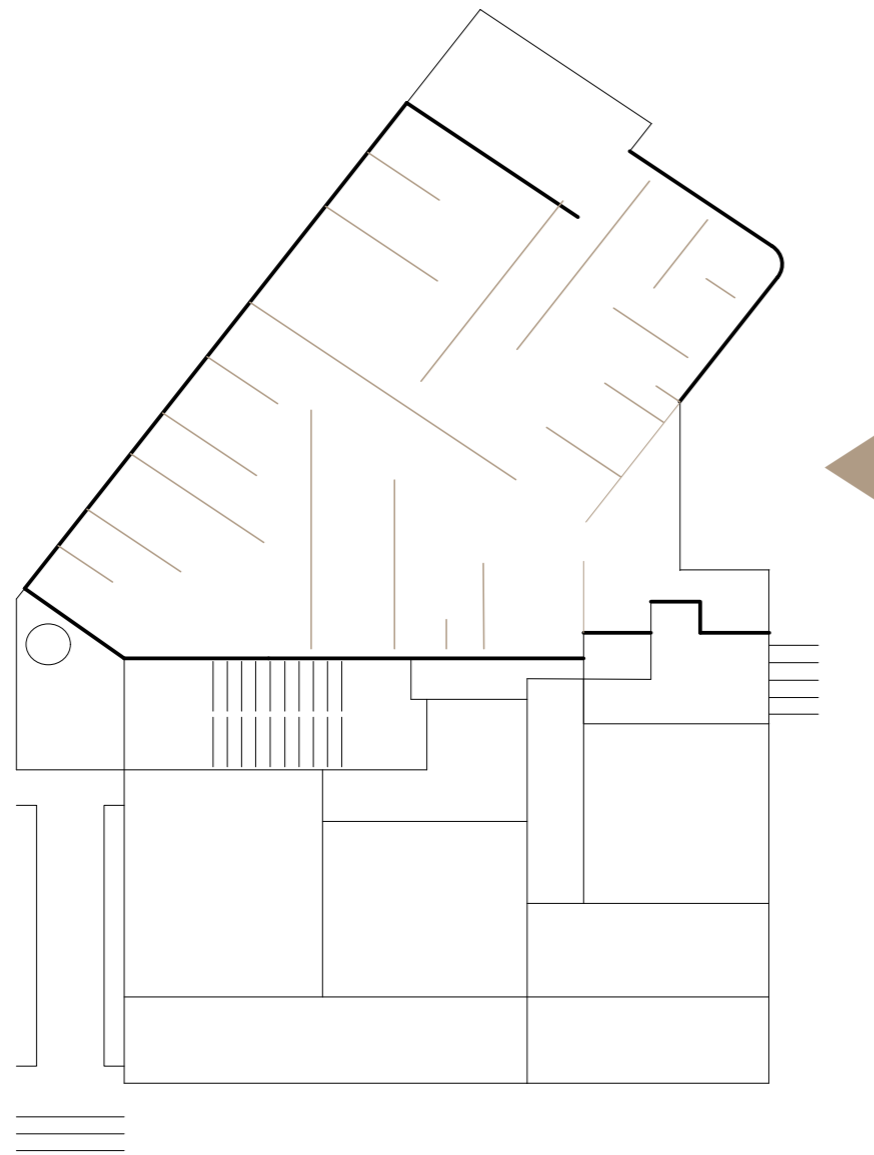
1 Acute
Immediate emotional and physical care unit



2 Ongoing
Personal and shared mental therapy clinics



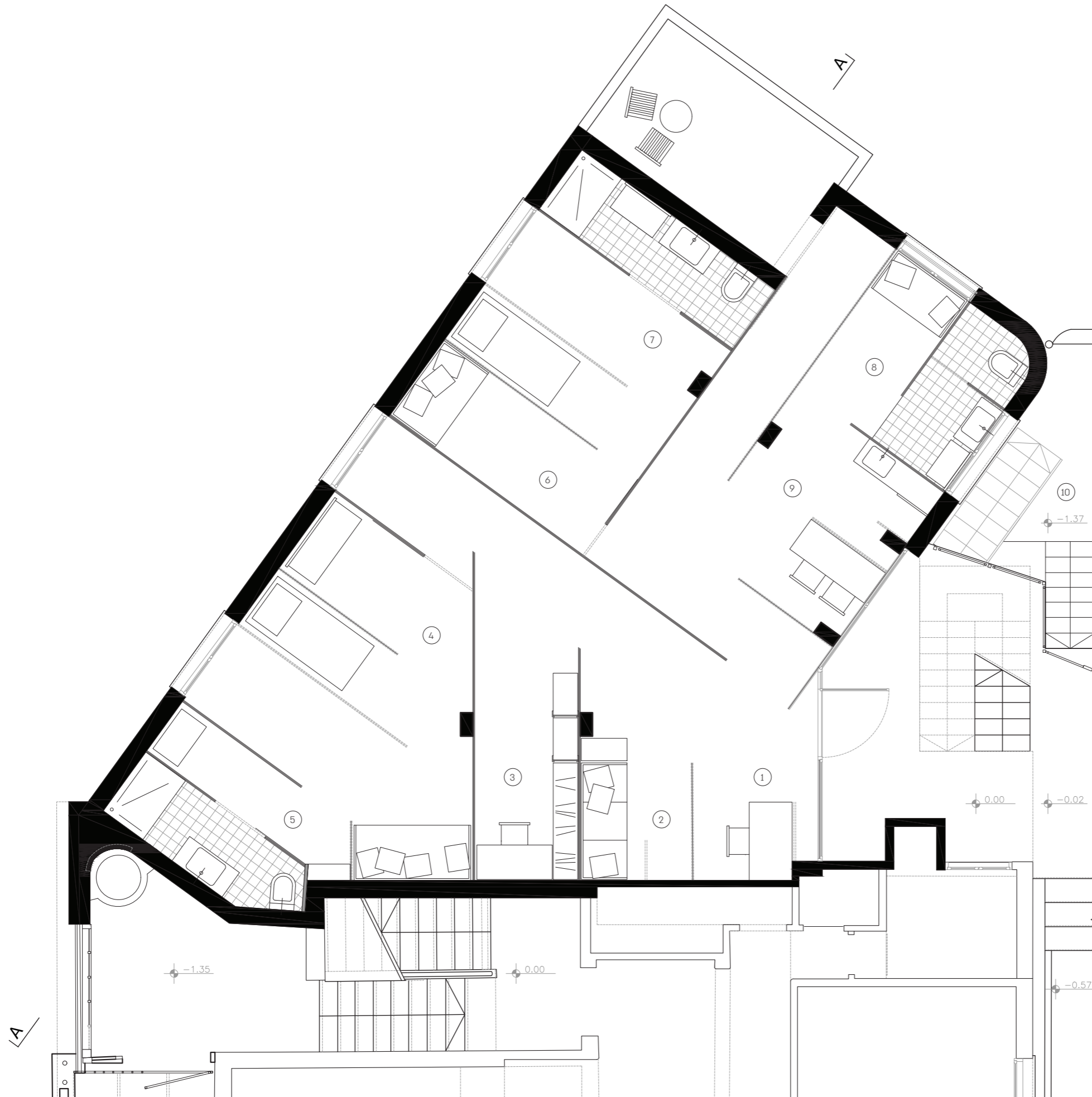
3 Rehabilitative
Short-term residencies for intensive care



With its own separate entrance, the **Acute care unit** is located in the building's rear.

The victim receives an immediate examination and medical treatment, including pregnancy and STDs prevention, along with continued emotional support.

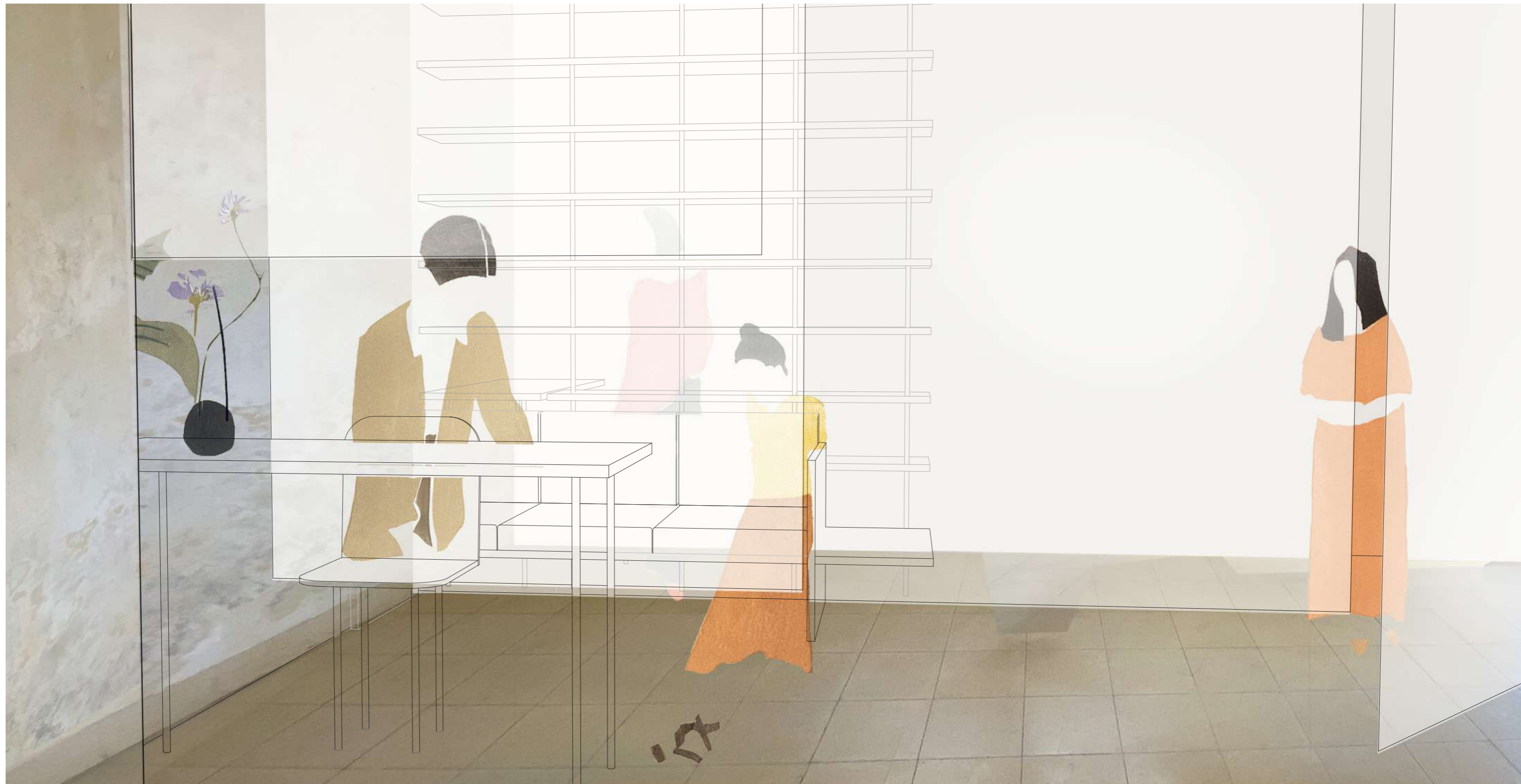
"... we need to perform a pathological examination, just like CSI stuff we see on TV – to document the wounds, the bites, take sperm, hair, spit, blood samples. Sometimes the attacker would vomit, we need to sample that, too."



- 1 Reception
- 2 Waiting area
- 3 Office and storage
- 4 Treatment area I
- 5 Personal bath I
- 6 Treatment area II
- 7 Personal bath II
- 8 Staff area
- 9 Kitchen and dining area
- 10 Storage (-1 fl.)

First floor Plan ☉

1:50



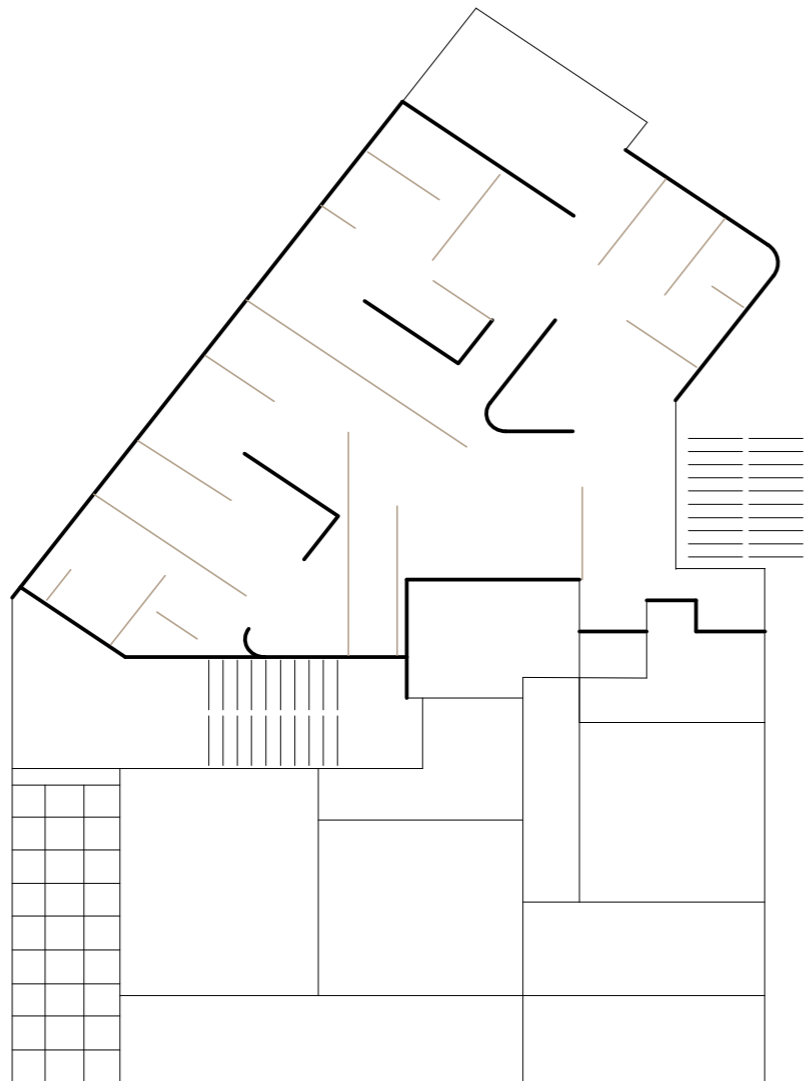
The interior walls have been replaced with curtains, allowing the patient to choose if she'd like to be accompanied by her mother, a friend, a therapist, or alone by herself.

View from the clinic's entrance into the reception



*The cover of the rape kit says:
"To the police detective- collect the victim's clothes"*

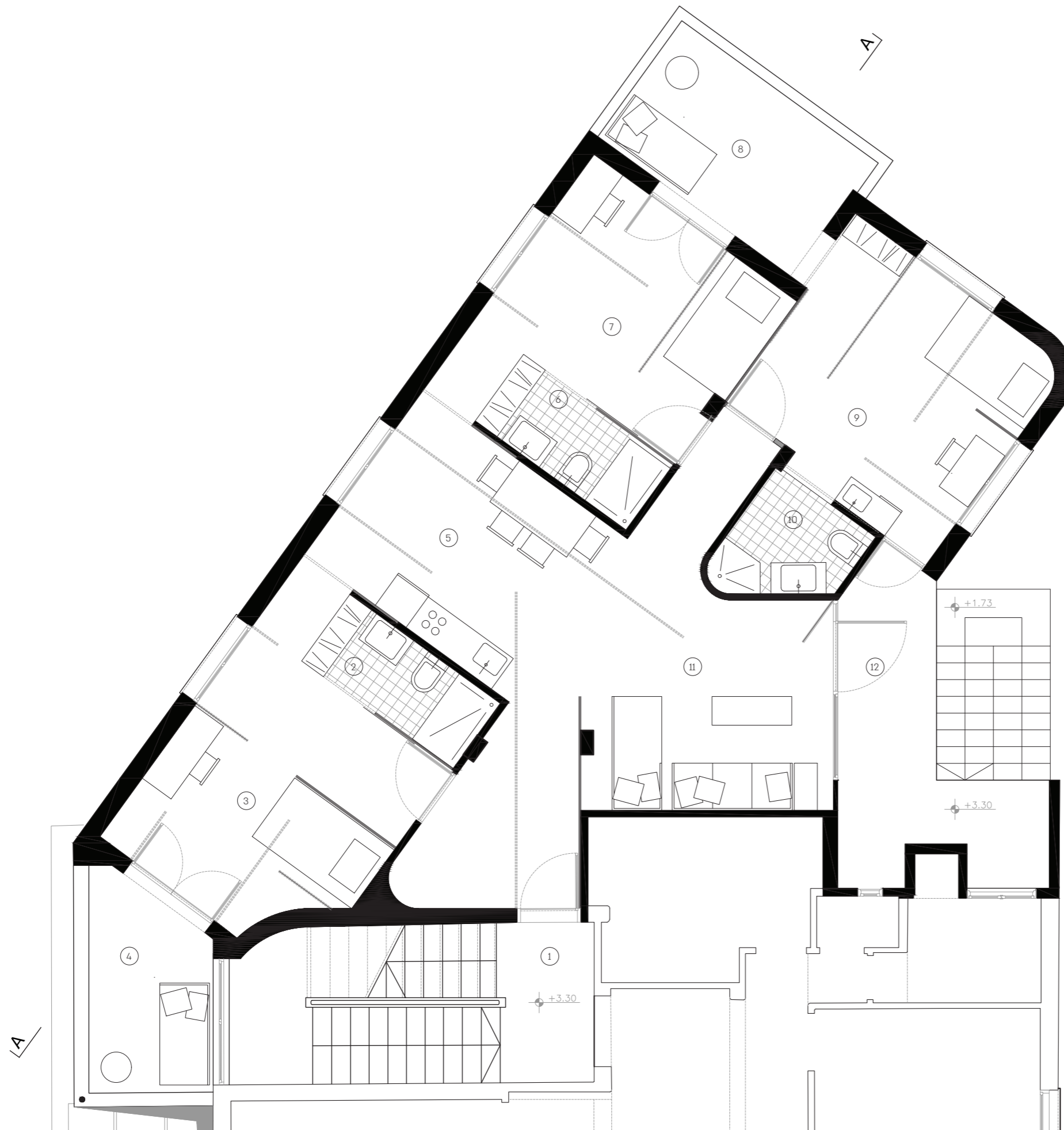
Personal treatment area



The **rehabilitative care hostel** is used for intense rehabilitation in extreme cases.

The remaining original walls function as internal shields, backing up and supporting the survivors recovery. The apartment's semi-independent suites allow each resident to control the level of privacy and openness towards the other residents.

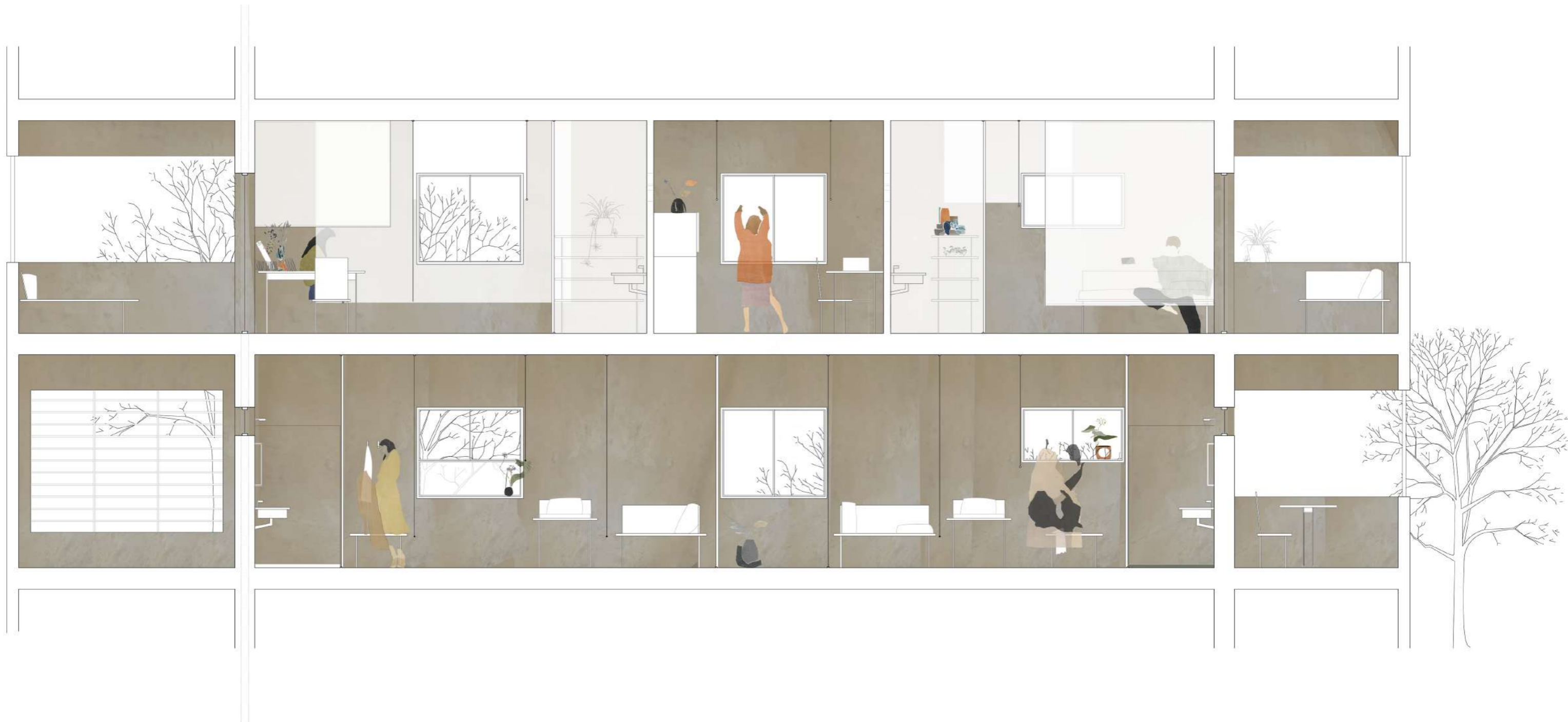
"... rape in an extreme place, where they've taken control over your body, and the first thing I want to do it is to give the girls back the sense of control"



- 1 Entrance
- 2 Personal suite I
- 3 Ensuite bath I
- 4 Terrace I
- 5 Shared Kitchen and dining scape
- 6 Personal suite II
- 7 Ensuite bath II
- 8 Terrace II + III
- 9 Personal suite III
- 10 Ensuite bath and kitchenette III
- 11 Shared living space
- 12 Side entrance

Second floor Plan ⌚

1:50



The rehabilitative care hostel allows each survivor to regain trust and open up back to the world at her own pace, if, and when, she is ready.

Section AA: crossing through the clinic's personal treatment area and the hostel suites

