

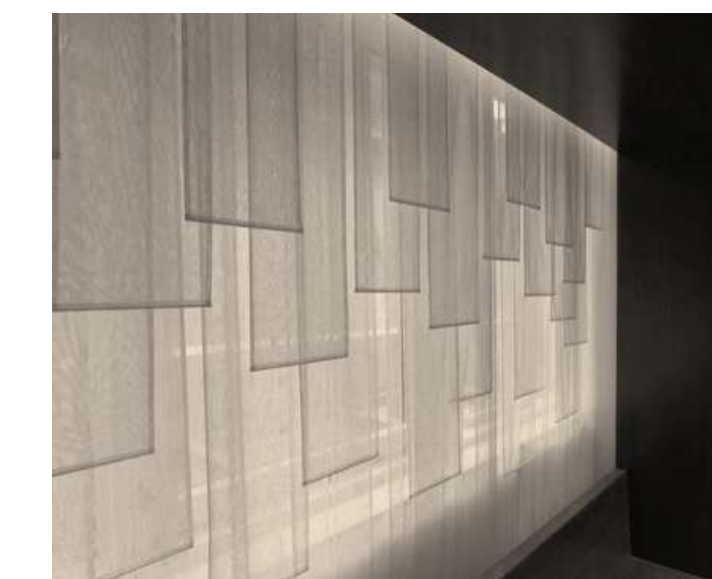
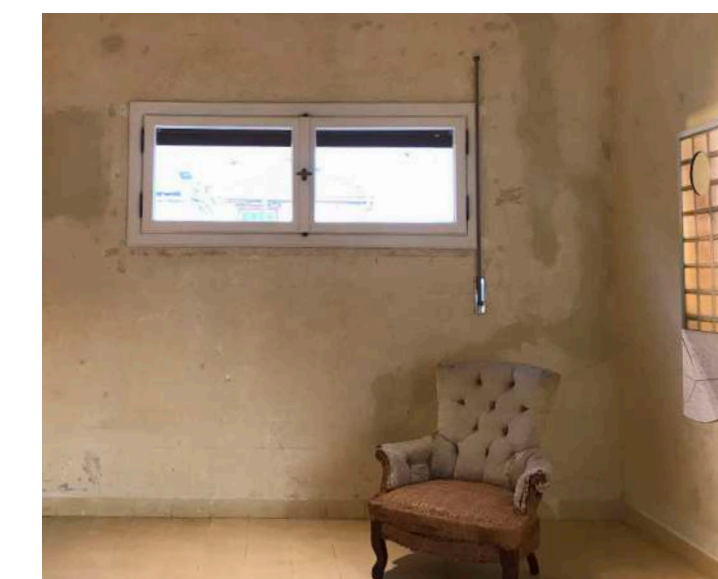
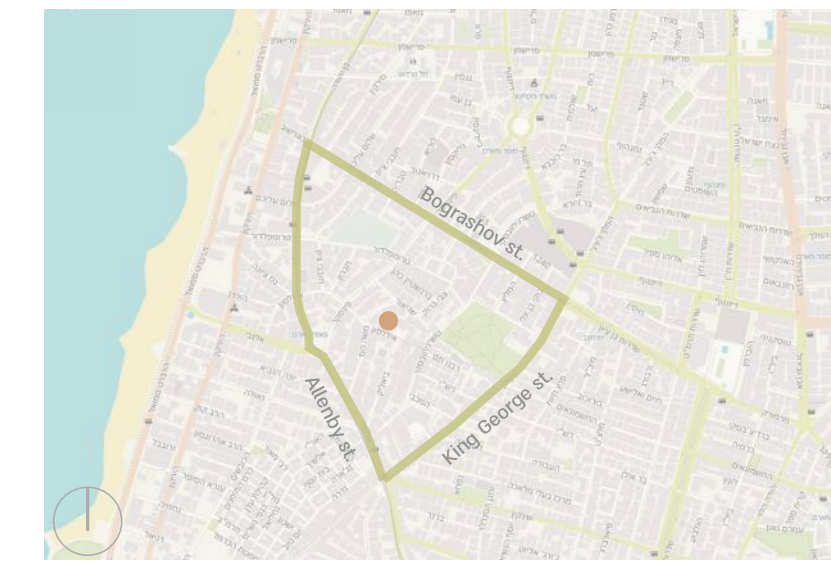
CURTAINS

An acute and rehabilitative care center for sexual assault victims

Hadass Rozental
Interior Design Studio | Arch. Ronnie Alroy

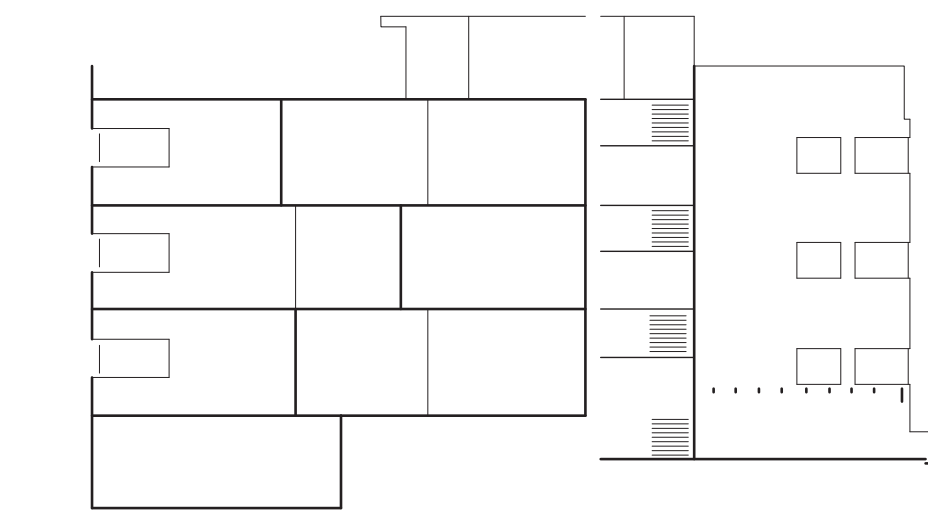


Idelson st. facade

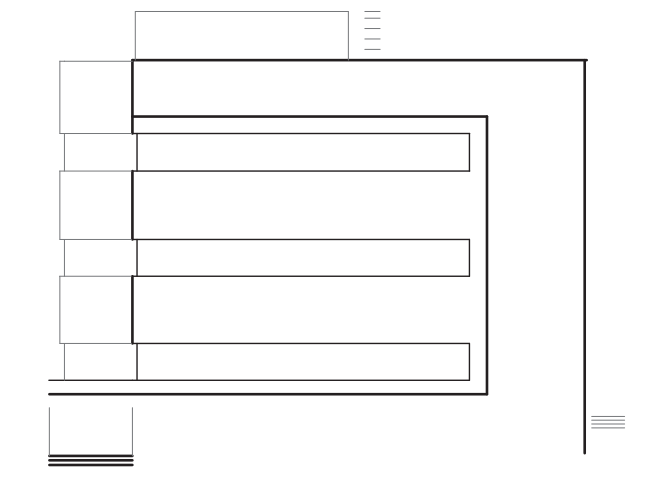


Harnessing these elements for the program, the **design concept** is constructed from the preserved original exterior walls as a protecting shield, and a tender, softly embracing interior.

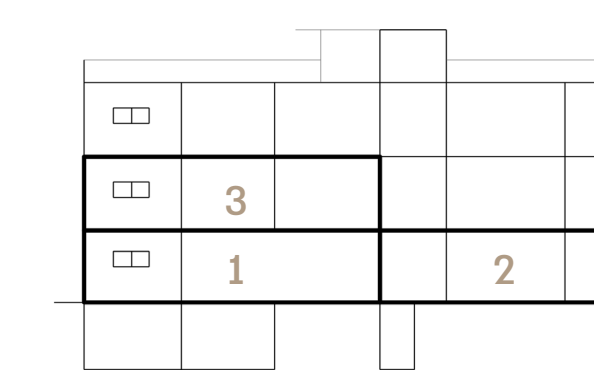
The **materials** inventory includes the original concrete walls, floor and openings, along with textile for interior partitions.



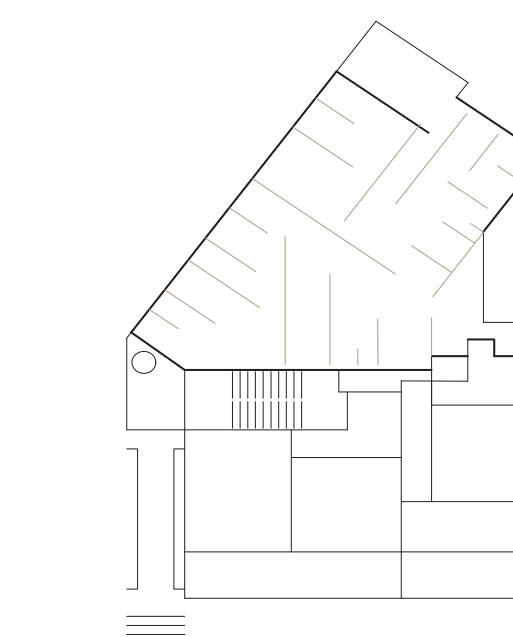
Sheltered balconies, allowing light and fresh air through



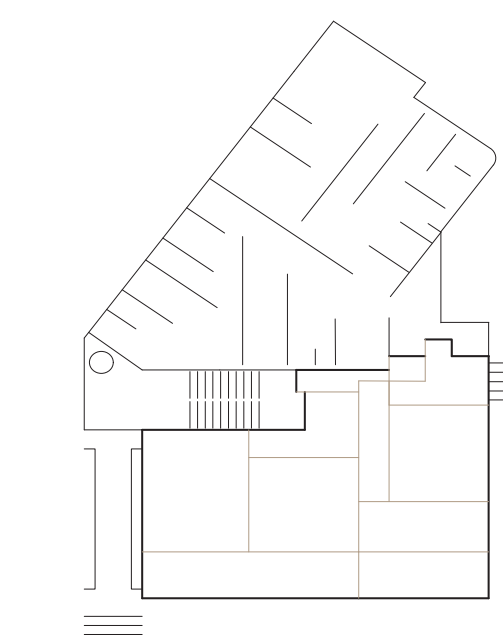
Rigid facades, maintaining maximum privacy.



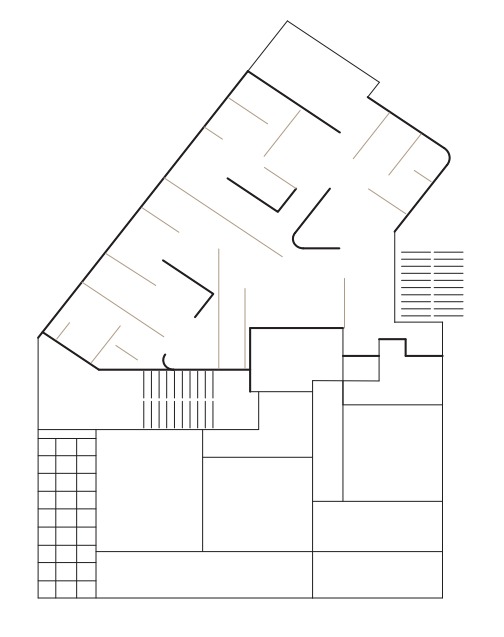
While the rest of the building maintains its residential functions, the center's master plan corresponds to the program's care stages:



1 Acute
Immediate emotional and physical care unit



2 Ongoing
Personal and shared mental therapy clinics



3 Rehabilitative
Short-term residencies for intensive care

In Israel, **1 of every 7 women** experienced a sexual harassment. More than a third of these cases are rapes, where the attacker is an acquaintance from the close vicinity.

In today's reality, seeking treatment or filing a complaint usually involves a 'second trauma', where the victims encounter the system's insensitivity, while having to navigate themselves, at the height of their distress, between self-help and law enforcement.

As a result, some choose not to seek aid.

Responding to threats from the domestic environment, Curtains is located between houses, accessible and open at all times.

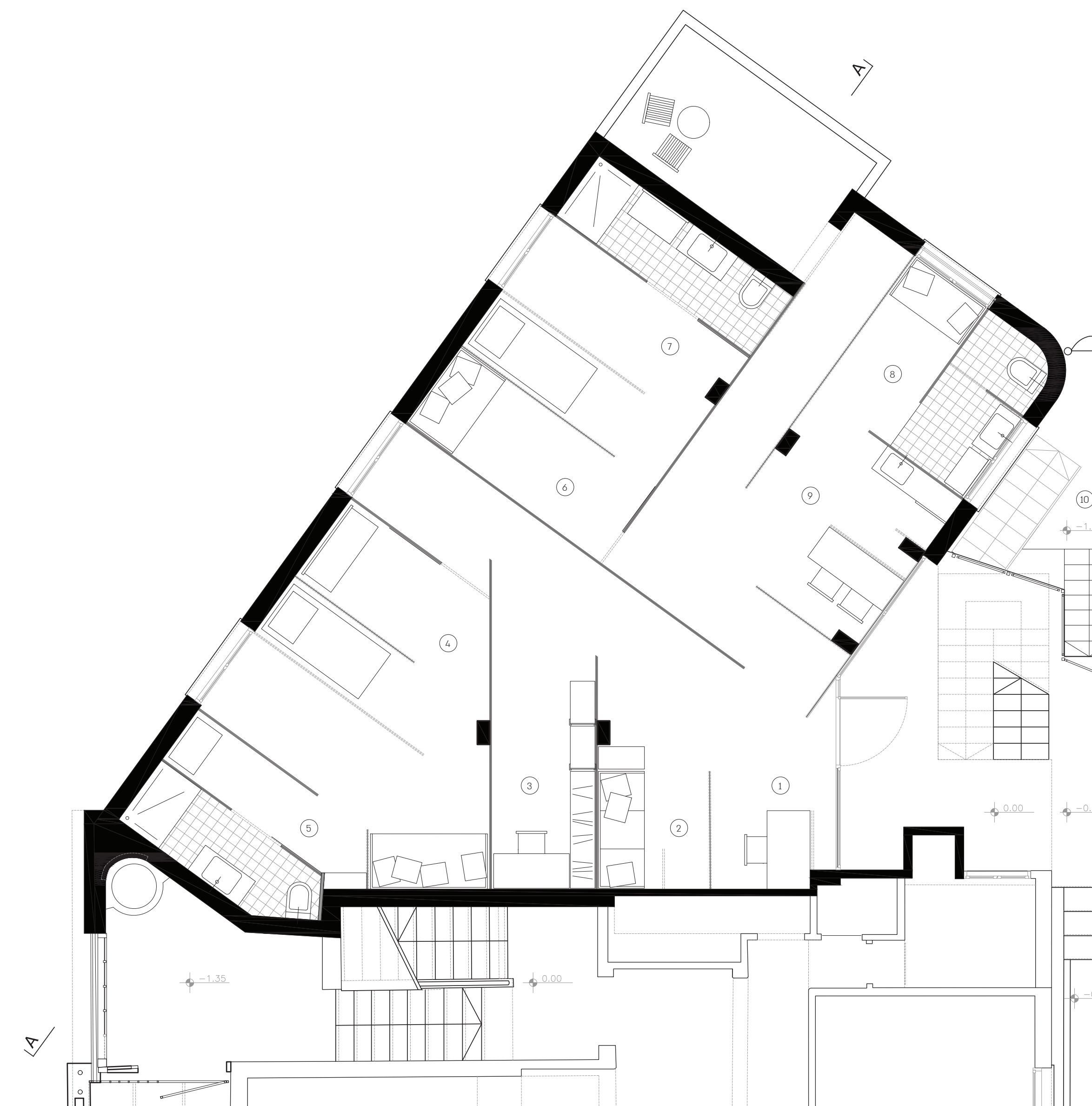
The staff includes a medical team, social workers and psychologists.

With its own separate entrance, the **Acute care unit** is located in the building's rear.

The victim receives an immediate examination and medical treatment, including pregnancy and STDs prevention, along with continued emotional support.

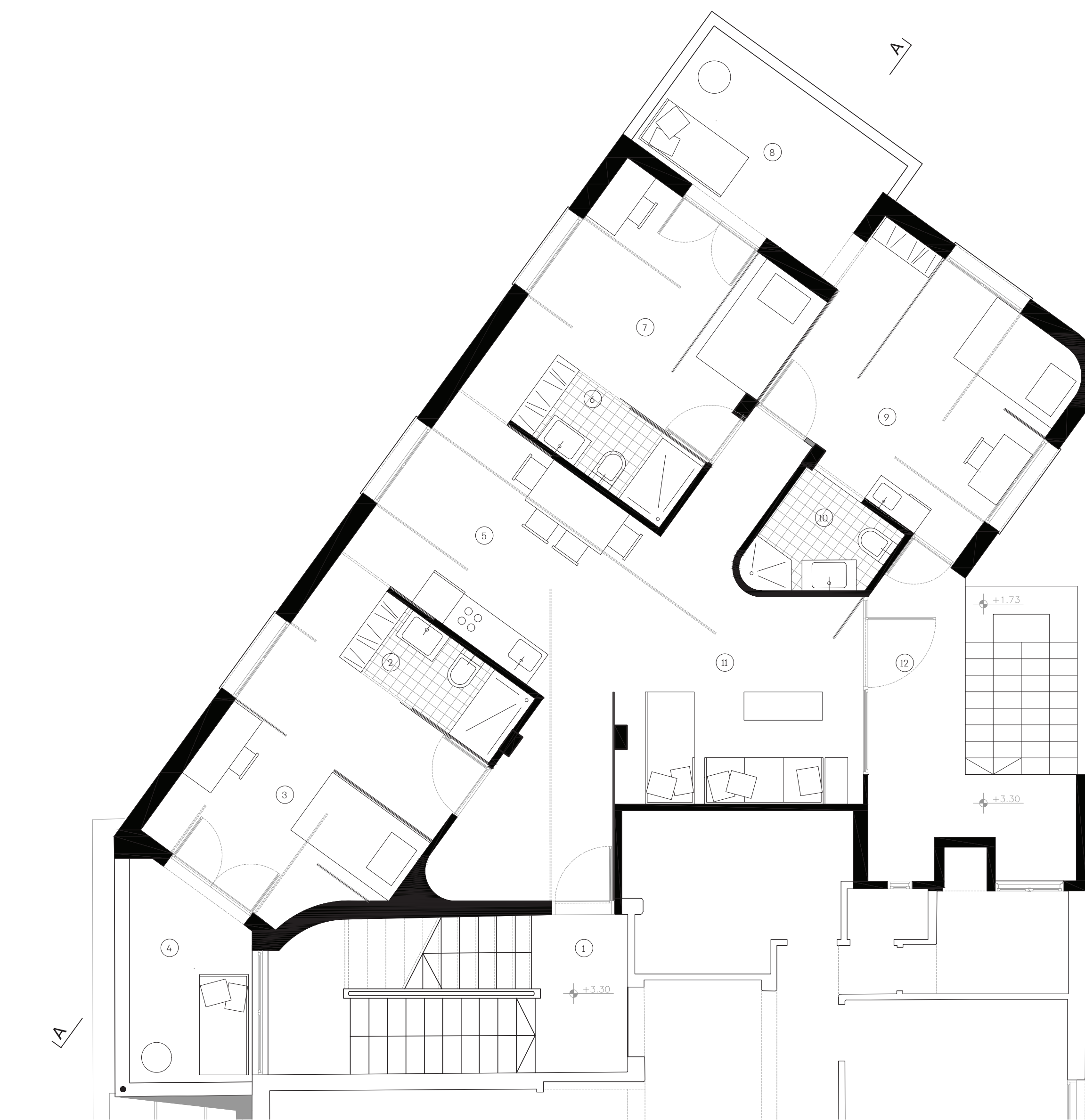
The **Rehabilitative care hostel** is used for intense rehabilitation in extreme cases.

The remaining original walls function as internal shields, backing up and supporting the survivors' recovery. The apartment's semi-independent suites allow each resident to control the level of privacy and openness towards the other residents.



- 1 Reception
- 2 Waiting area
- 3 Office and storage
- 4 Treatment area I
- 5 Personal bath I
- 6 Treatment area II
- 7 Personal bath II
- 8 Staff area
- 9 Kitchen and dining area
- 10 Storage (-1 fl.)

First floor Plan 1:50



- 1 Entrance
- 2 Personal suite I
- 3 Ensuite bath I
- 4 Terrace I
- 5 Shared Kitchen and dining scape
- 6 Personal suite II
- 7 Ensuite bath II
- 8 Terrace II + III
- 9 Personal suite III
- 10 Ensuite bath and kitchenette III
- 11 Shared living space
- 12 Side entrance

Second floor Plan 1:50

CURTAINS



Personal treatment area

*The cover of the rape kit says:
"To the police detective- collect the victim's clothes"*



View from the clinic's entrance into the reception

The interior walls have been replaced with curtains, allowing the patient to choose if she'd like to be accompanied by her mother, a friend, a therapist, or alone by herself.

