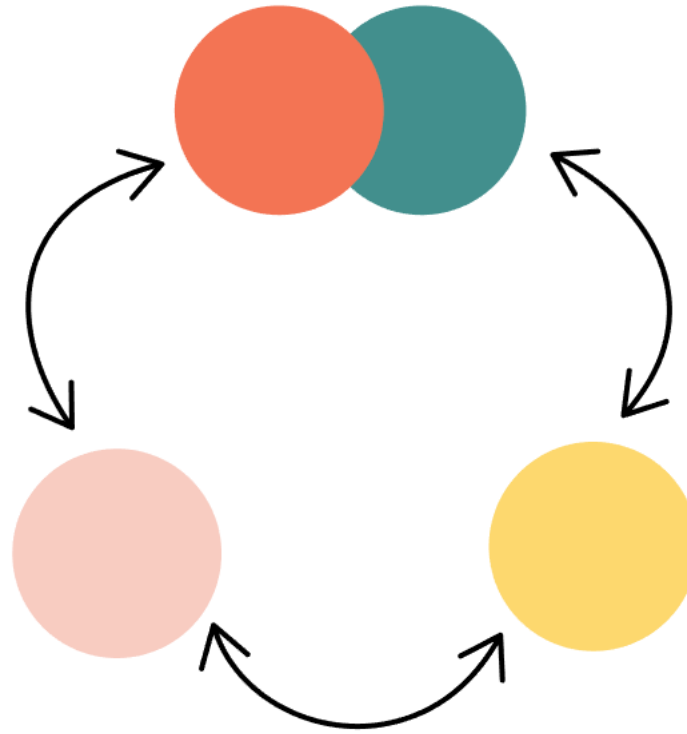


Co-
dividu-
quality



Concept

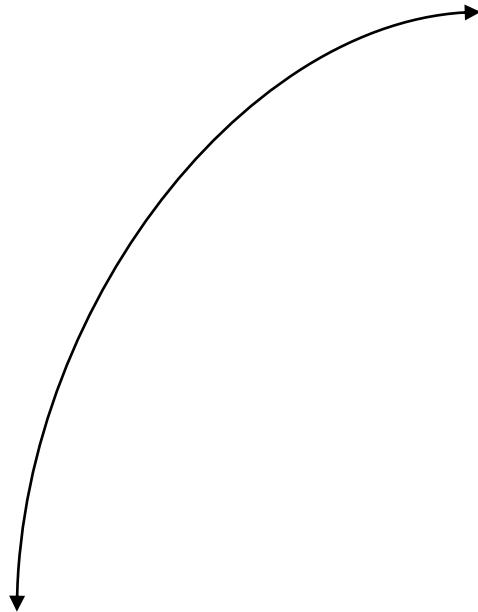
Humans search for a community and support to evolve and to feel they are belong

Students leave their homes and natural environment and move to a new stage in their life



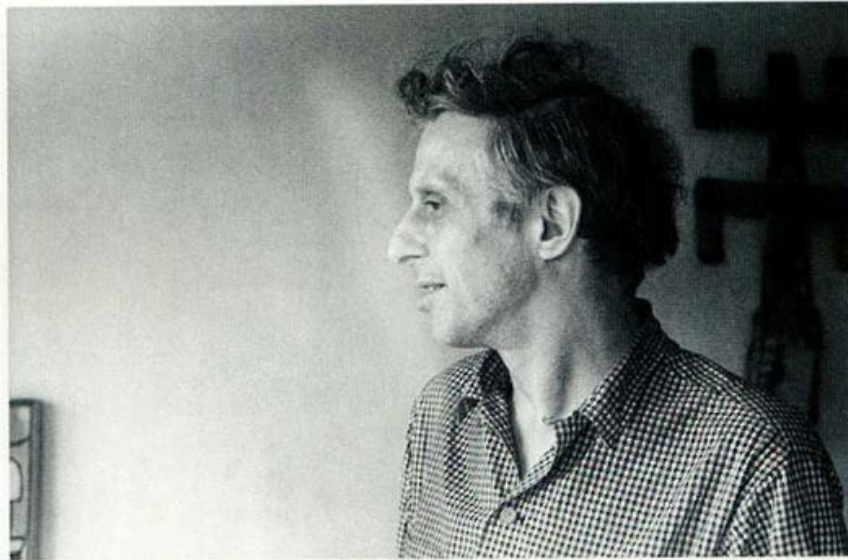
INDEPENDENCE

COMMUNITY



Concept

The architect Aldo Van Eyck proposed to examine the house and the city as a "Twin-Phenomena" - a mutual and reciprocal units. Twin Phenomena has shattered the barriers of dualism with the two-sided declaration.



Aldo van Eyck in ca. 1964 (photo Pierre Alechinsky)

'A house must be like a small city if it's to be a real house. A city like a large house if it's to be a real city. In fact, what is large without being small has no more real size than what is small without being large. If there is no real size, there will be no human size.'



We ask to create a combined model of 'STUDENTIAL LIVING' IN THE CITY that will provide a two sided character for students.

This model provide different ratios of public and privet space, in 3 function levels -

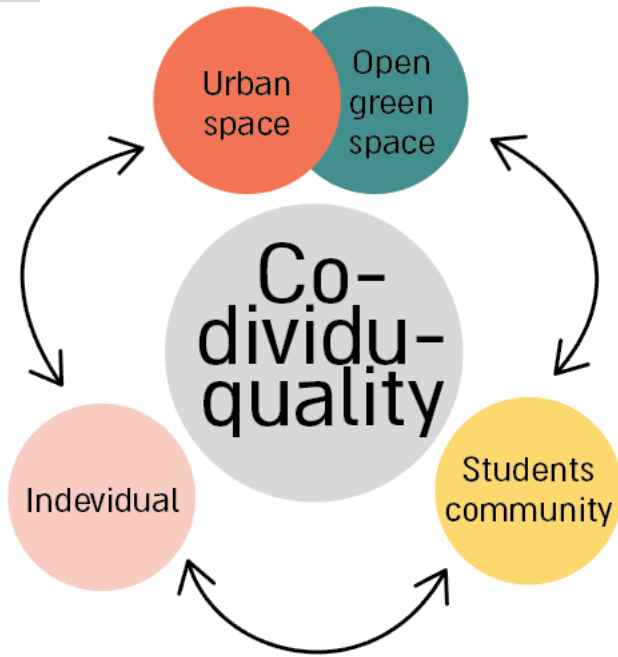
LIVING UNIT (Individual)

STUDENTIAL (Community)

URBAN SPACE (Urban and Open green space)

Co-
dividu-
quality

Concept



We ask to create a combined model of 'STUDENTIAL LIVING' IN THE CITY that will provide a two sided character for students.

This model provide different ratios of public and privet space, in 3 function levels -

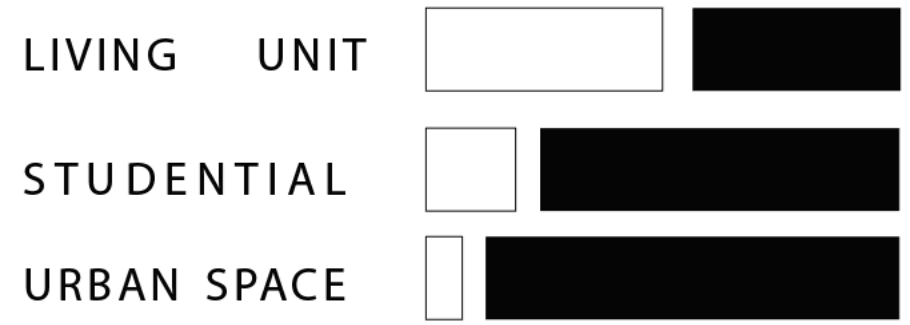
LIVING UNIT (Individual)

STUDENTIAL (Community)

URBAN SPACE (Urban and Open green space)



PRIVET PUBLIC

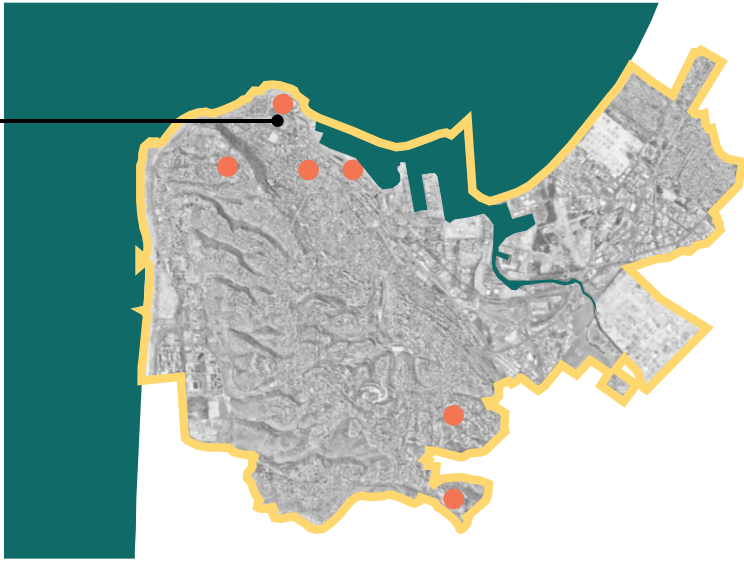


Context Haifa Bat Galim central bus station

Haifa Bat Galim
central bus station

— Haifa district

● Academy



Navy base

Rambam Hospital
Medicine faculty

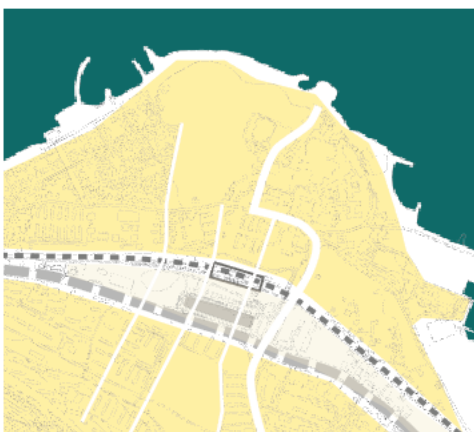
Haifa Bat Galim
central train
station

Bat Galim central
bus station

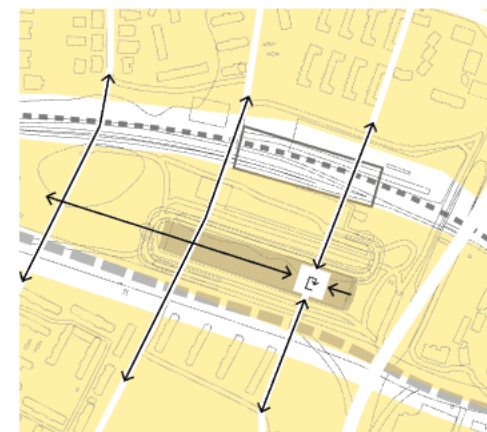
Routh 4



Barrier



Creating a new city paths



Connecting the building into the city

Context Haifa Bat Galim central bus station

was inaugurated in 1974 and its location was chosen in intention to become the main transportation station in the north of Israel. the project was cooperation between Sharon-Eidelson architects and architect Aria Feinberd. it's one of the most known brutalist building in Israel, characterize by exposed concrete, and repetitive emphasized construction structure.

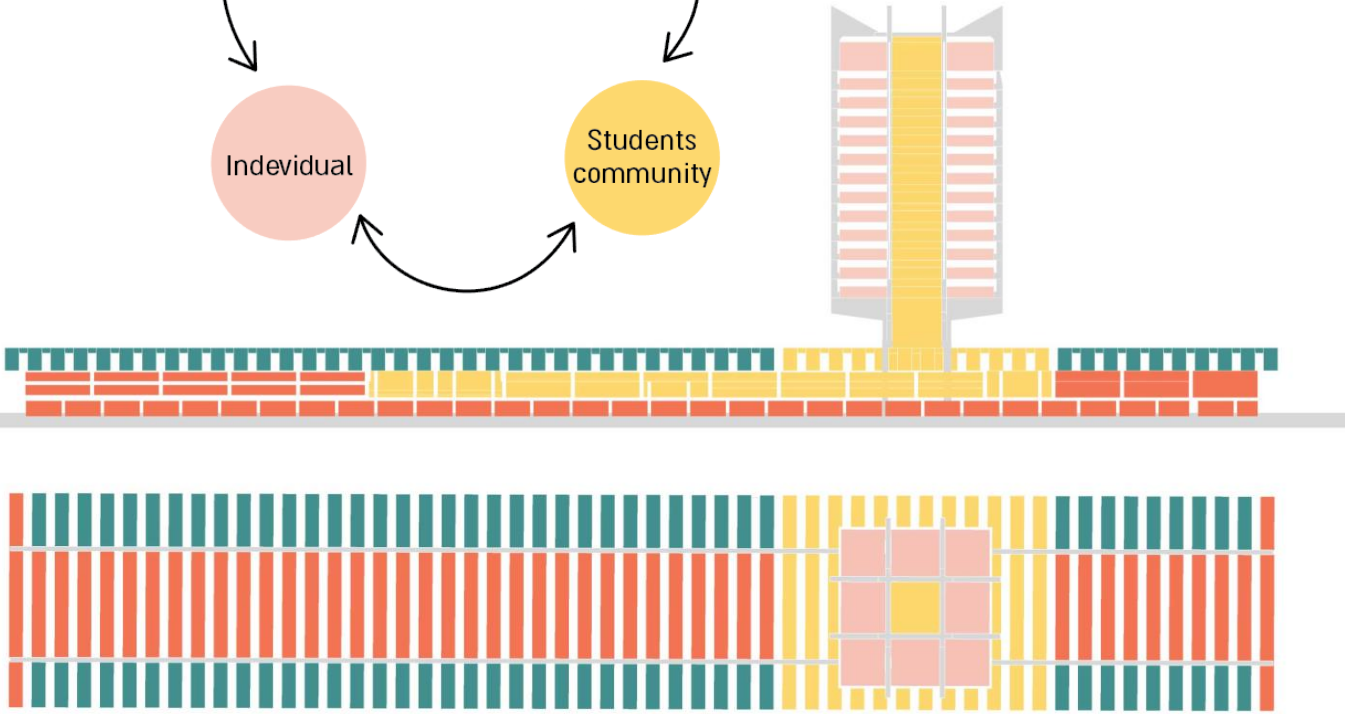
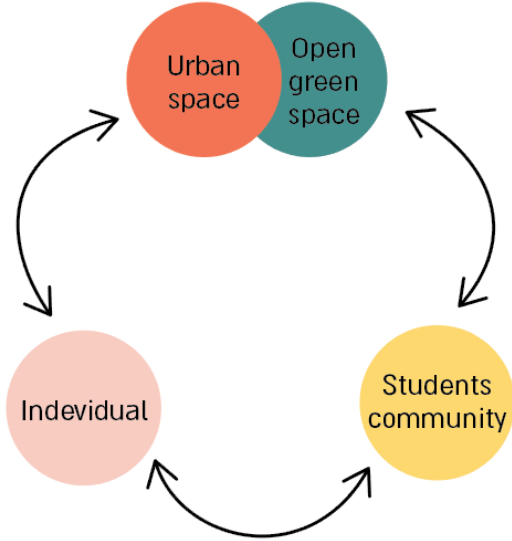


The 80 acers building, became a city landmark thank to his 12 floors office tower. except of the passengers platforms there were stores and businesses, bus garage, and the Egged company office's, as well as the Israel electricity office's. it was a vibrant and busy space for 30 years.

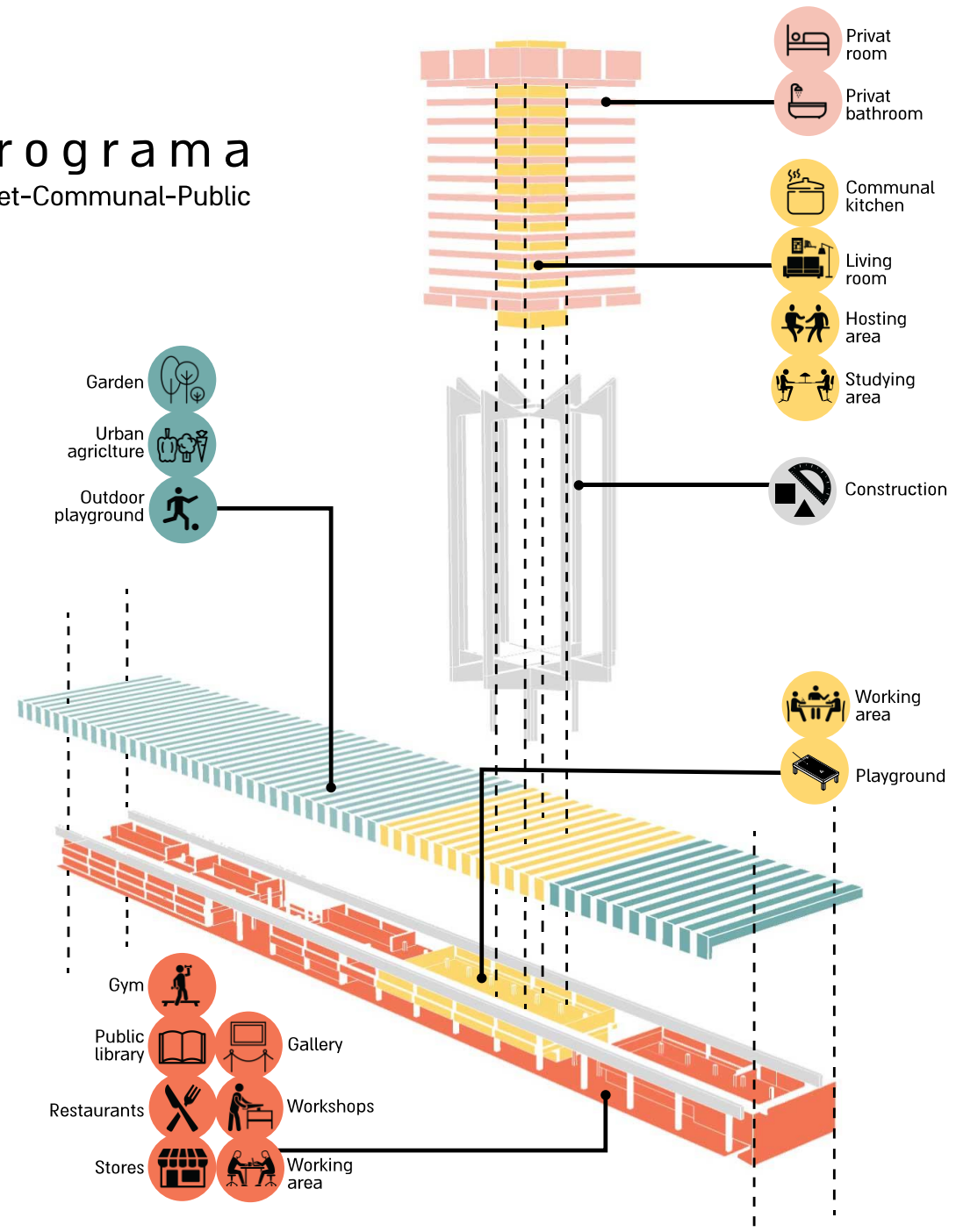
In 2003 the public transportation of Haifa changed in result of opening 2 new central bus stations - Hof Hacarmel and Lev Hamifrtz. this led to shutting down all the activity that took place in it. in this days it remains abandoned and neglected

Co-
dividu-
quality

Planning Principle

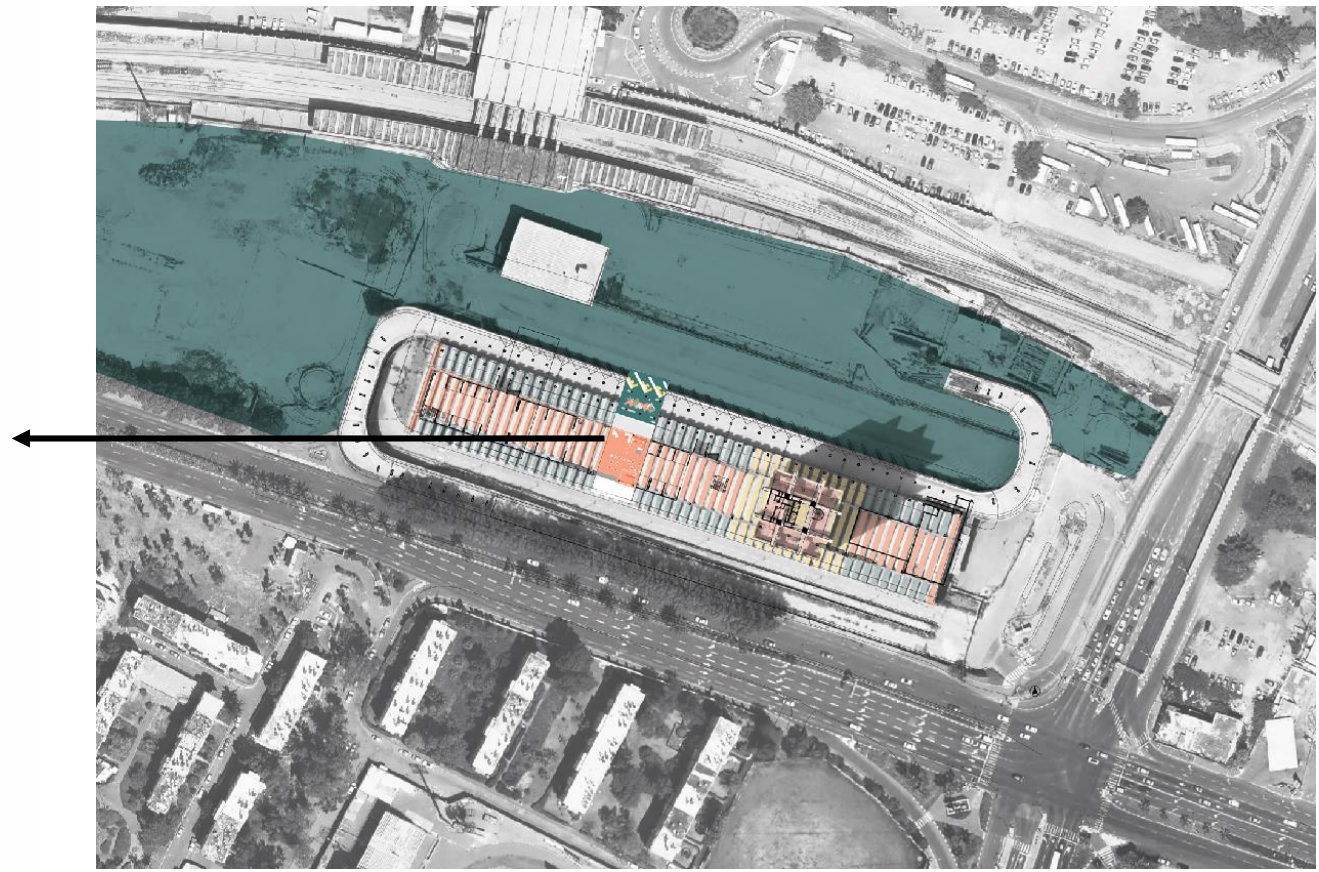
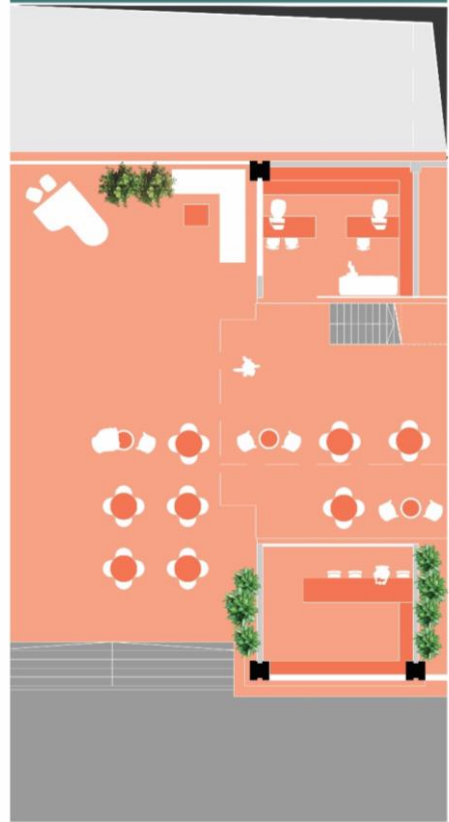
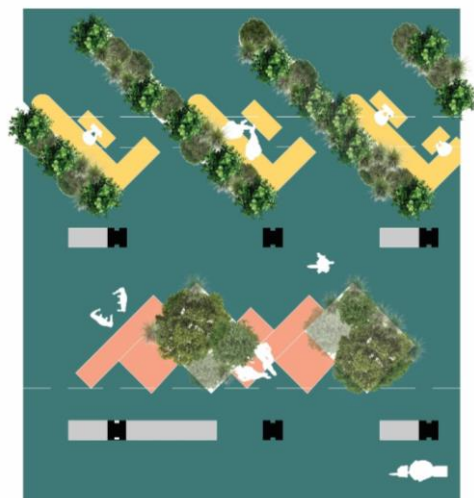


Programa Privet-Communal-Public



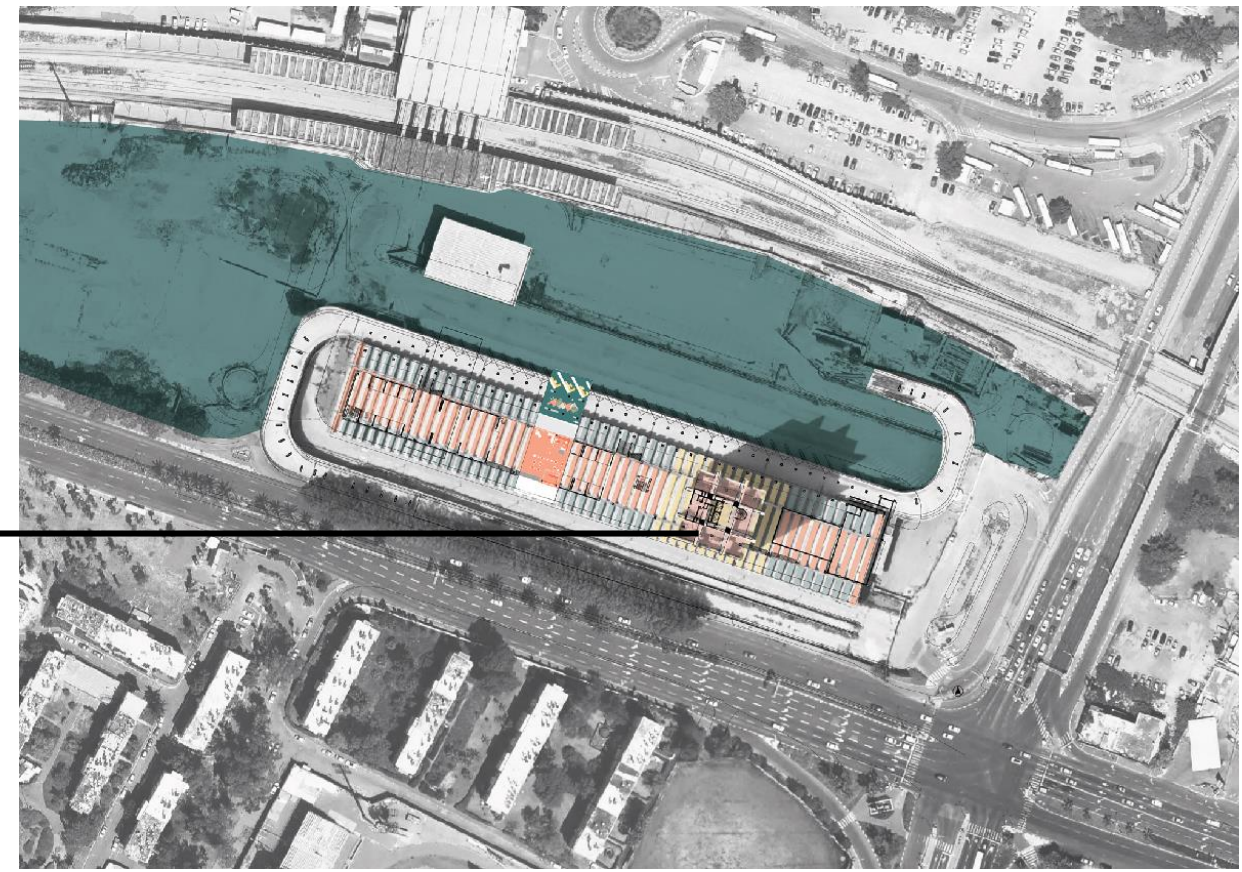
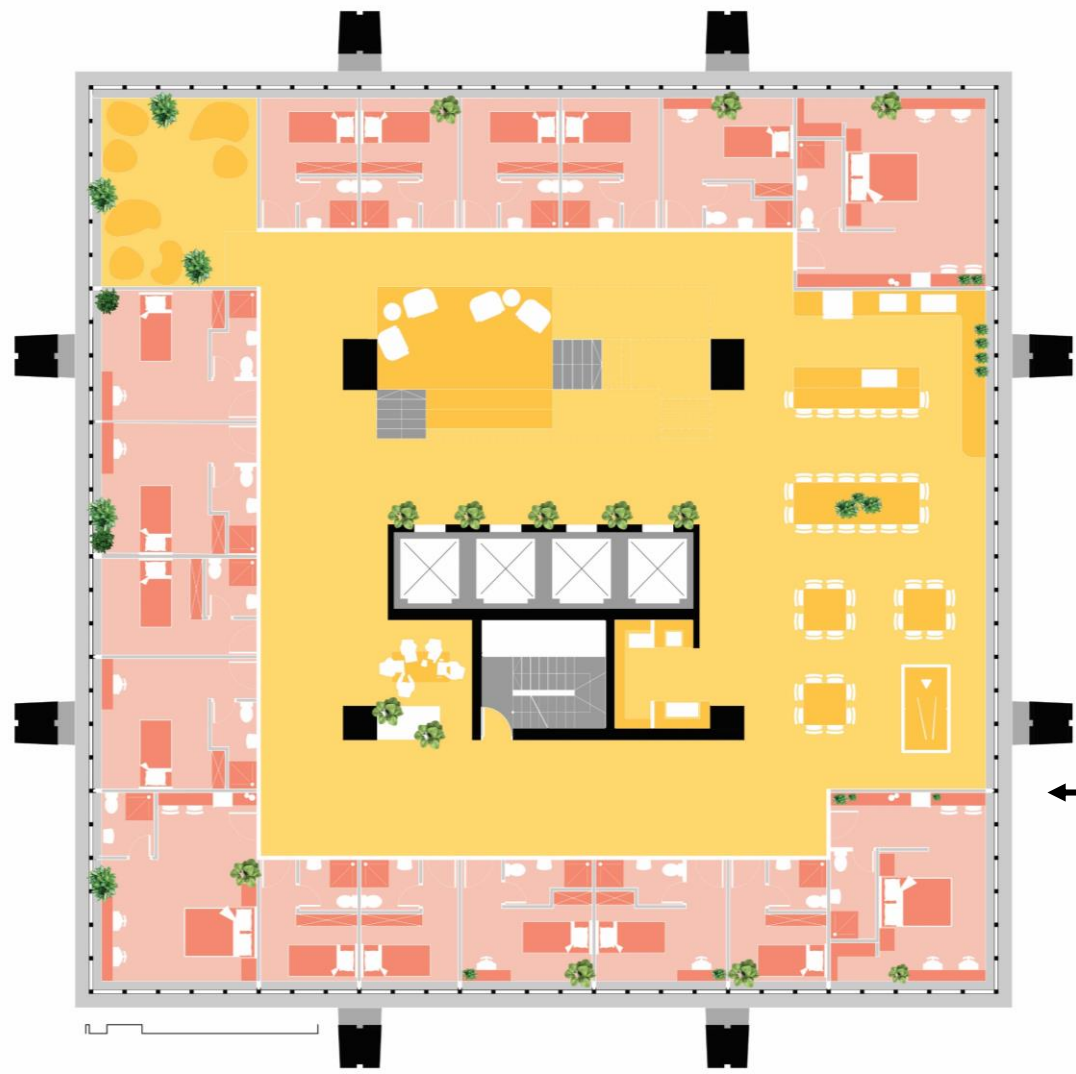
Co-
dividu-
quality

Plan Ground Floor



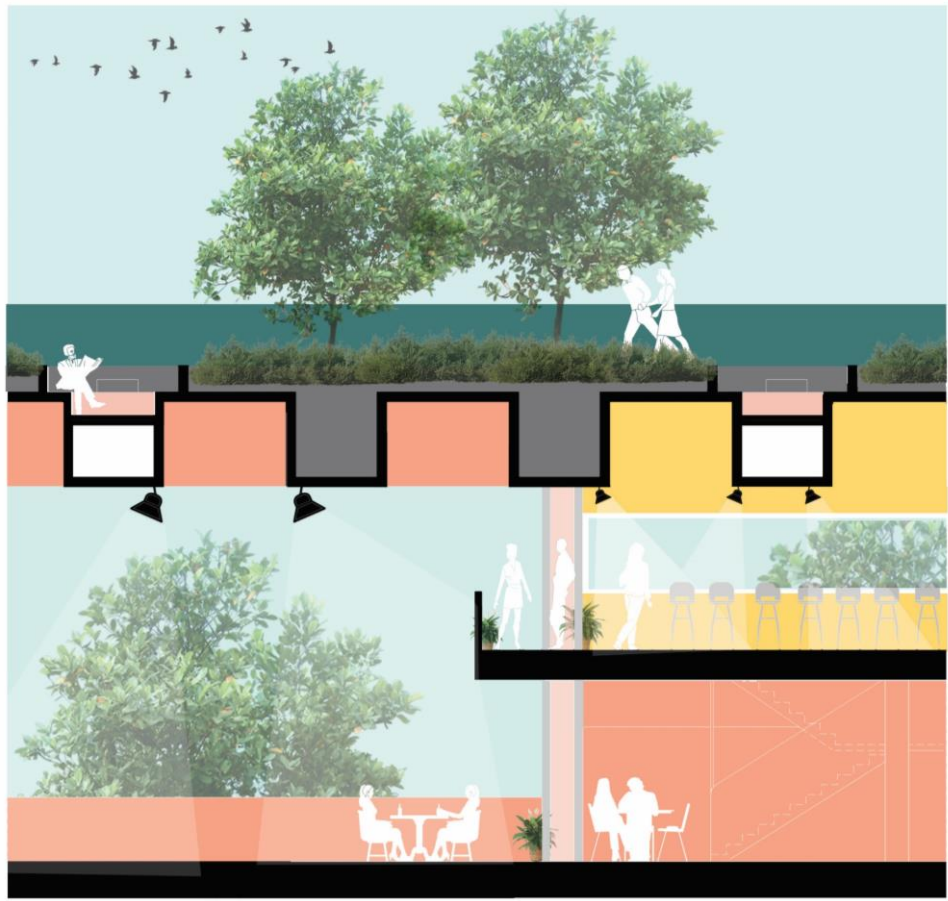
Co-
dividu-
quality

plan Typical Tower Floor



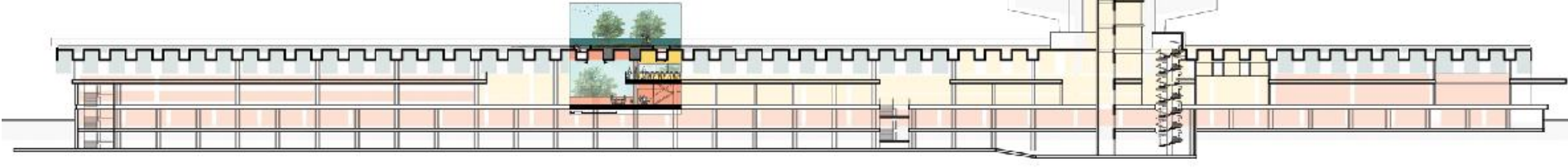
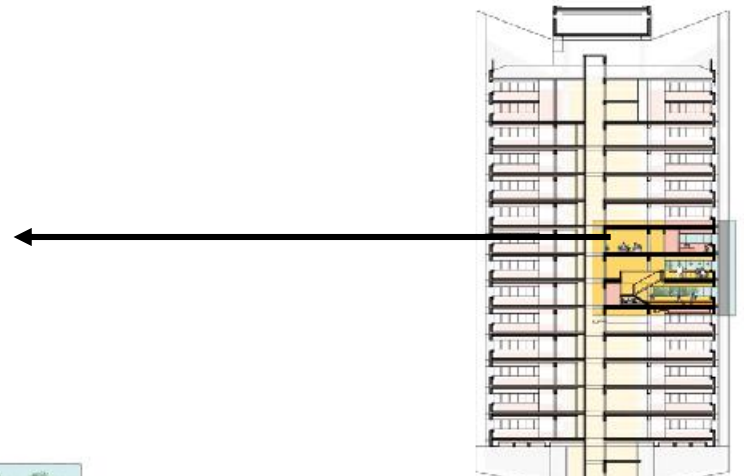
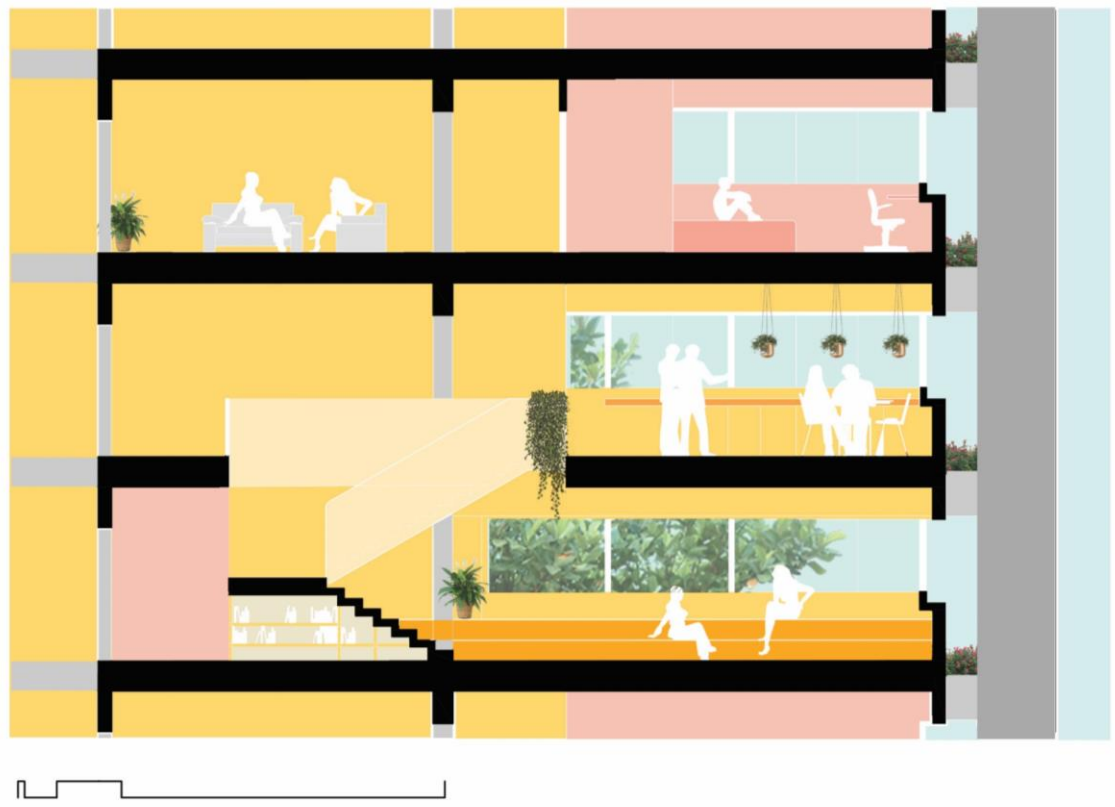
Co-
dividu-
quality

Section Urban and Community Area



Co-
dividu-
quality

Section Tower Floor



Co-
dividu-
quality



Co-
dividu-
quality



Thank you,
Nofar Habeman | Sapir Pais

