

cutting edge

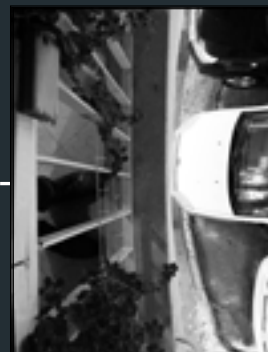
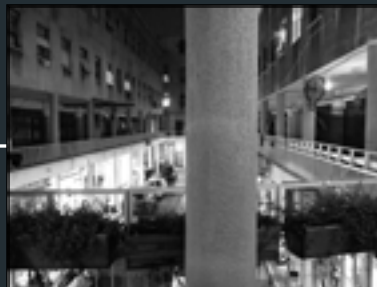
cuttingwedge



interior design studio | design for designer | advisor: arch. guy re moor | dina einstein | daniel siman-tov



layers
opacity





layers
opacity

situations
temporary space
multi functional center
round the clock



cuttingwedge

the designer



interior design studio | design for designer | advisor: arch. guy re moor | dina einstein | daniel siman-tov

cuttingwedge

the designer



interior design studio | design for designer | advisor: arch. guy re moor | dina einstein | daniel siman-tov

cuttingwedge

the designer



interior design studio | design for designer | advisor: arch. guy re moor | dina einstein | daniel siman-tov

cuttingwedge

the designer



interior design studio | design for designer | advisor: arch. guy re moor | dina einstein | daniel siman-tov

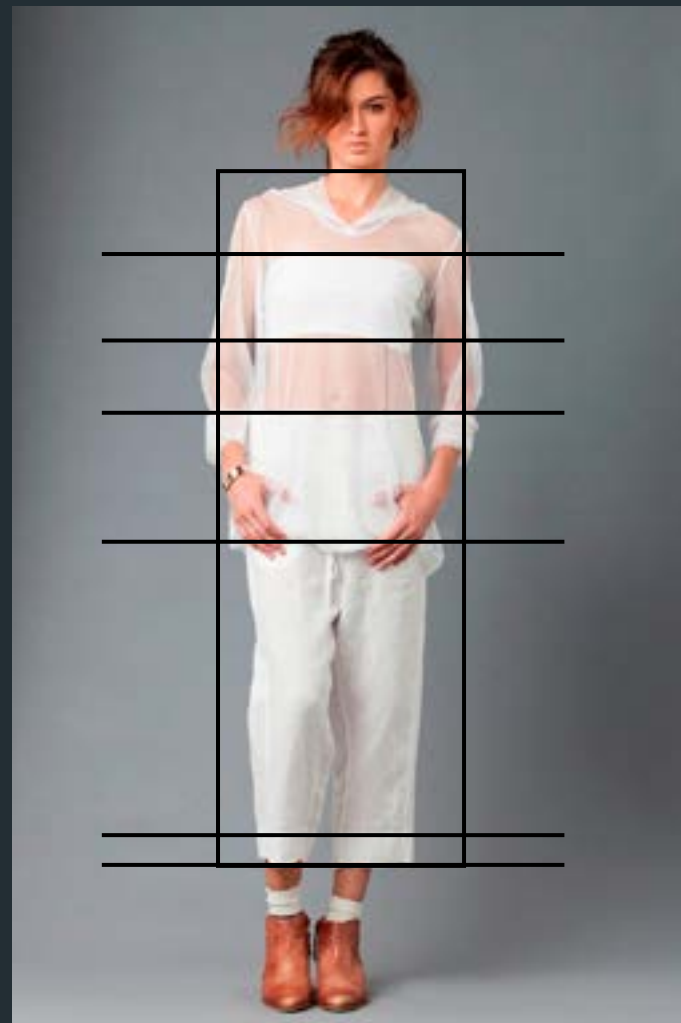
monochromatic



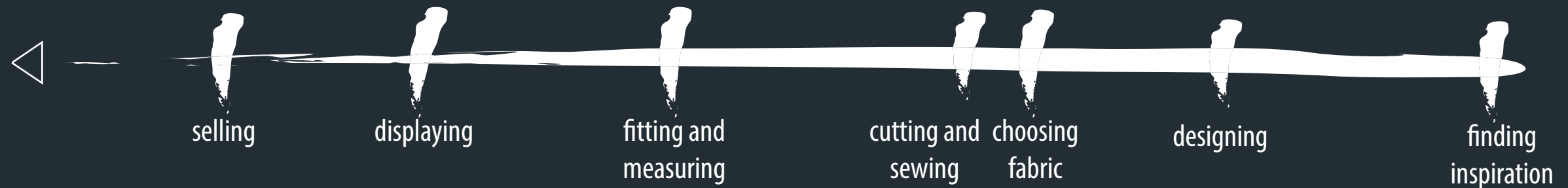
monochromatic
basic silhouette



monochromatic
basic silhouette
distinctive cuts



monochromatic
basic silhouette
distinctive cuts
fashion designing
process
seperate zones
for working and
displaying



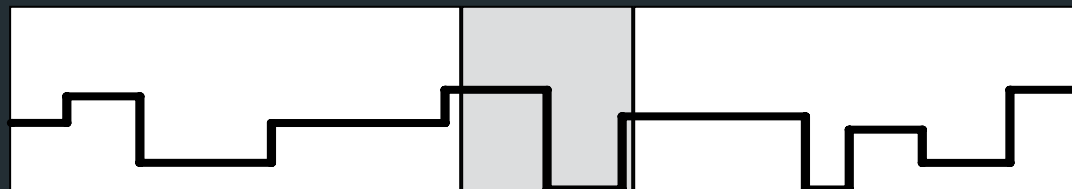
basic section



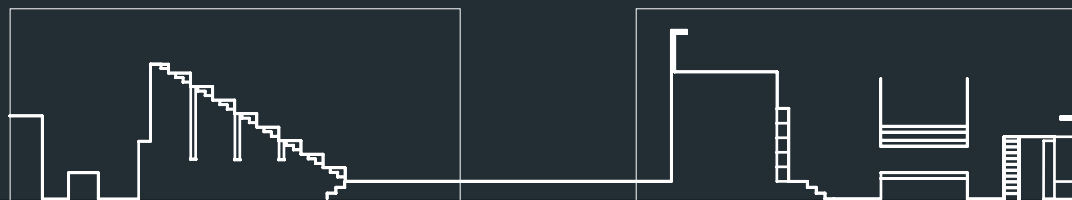
simplified section

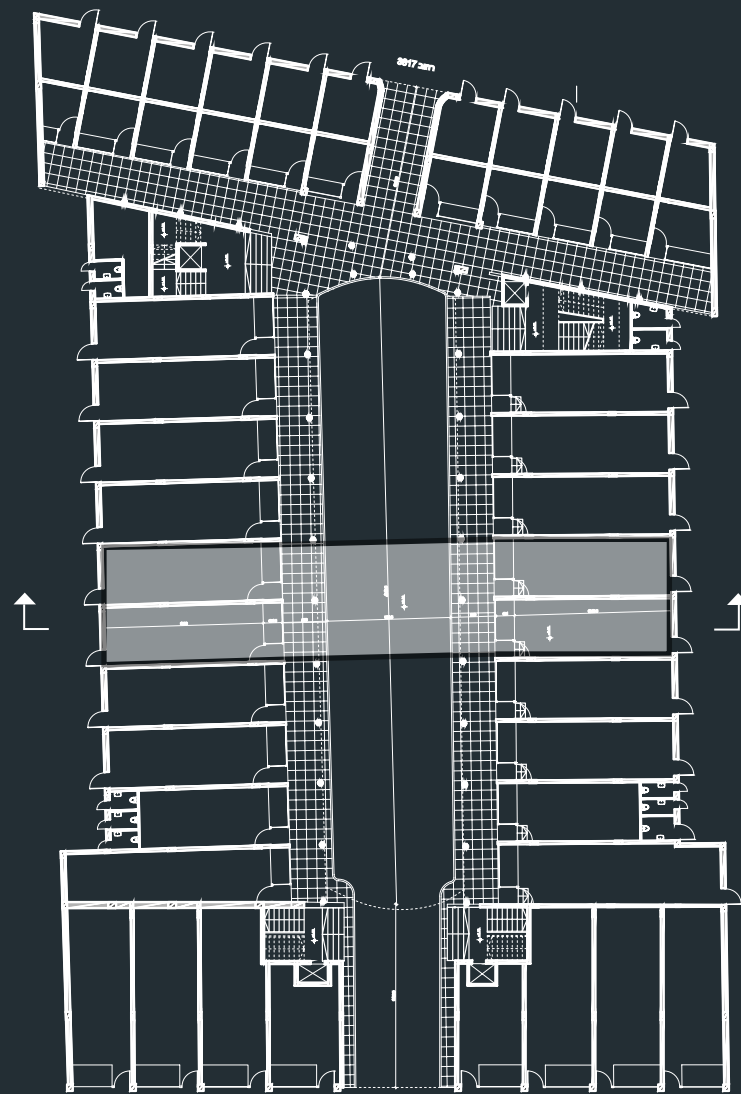


conceptual section



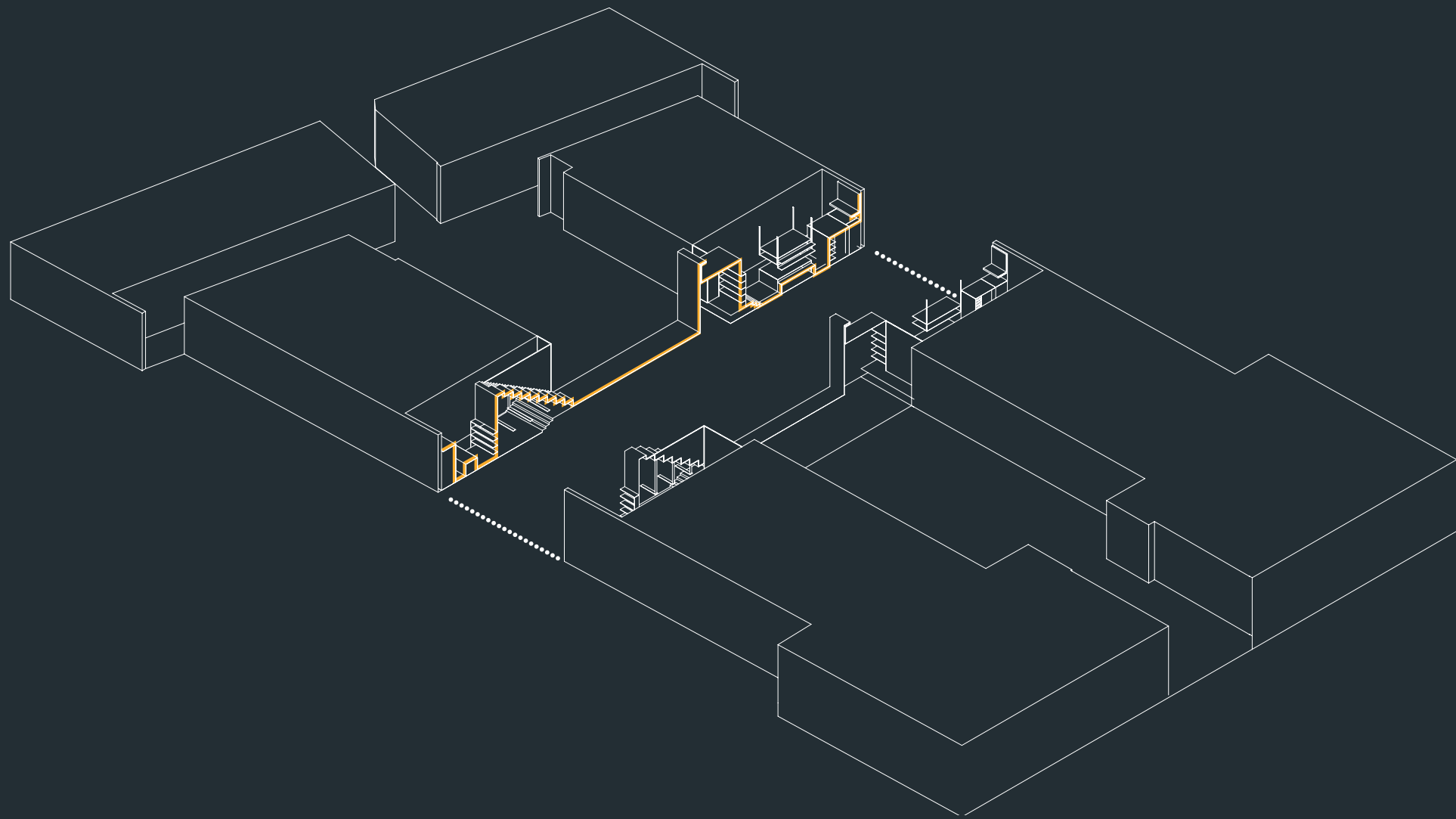
detailed section - by functions





cuttingwedge

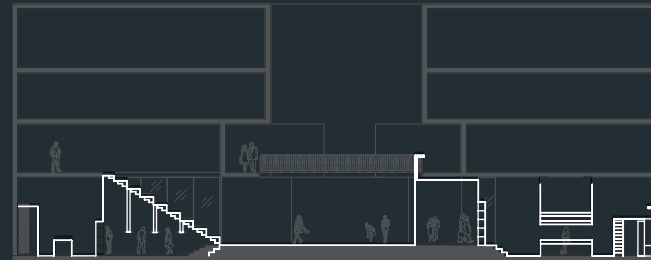
isometric section



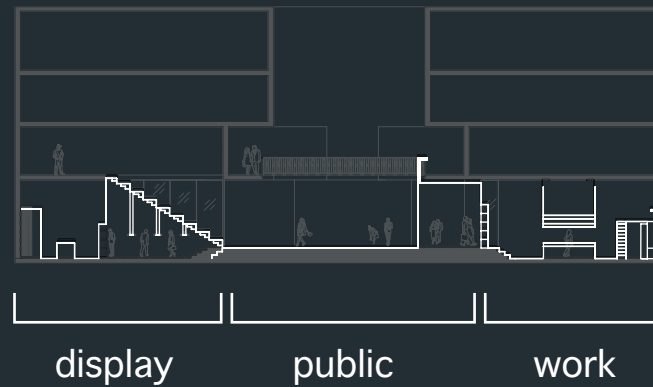
interior design studio | design for designer | advisor: arch. guy re moor | dina einstein | daniel siman-tov

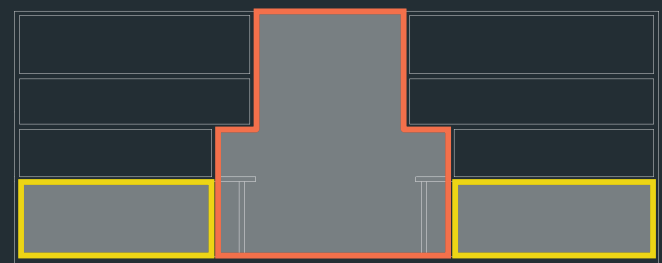
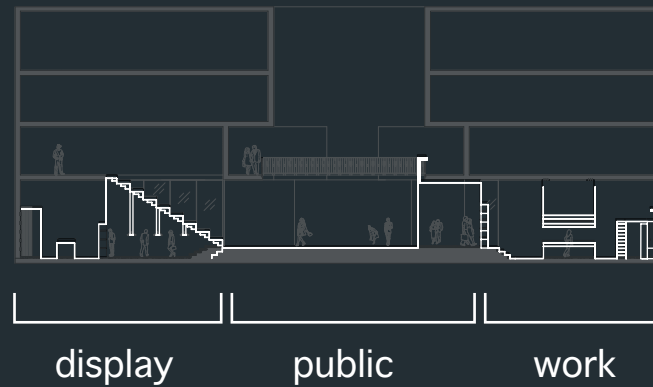
cuttingWedge

conceptual section

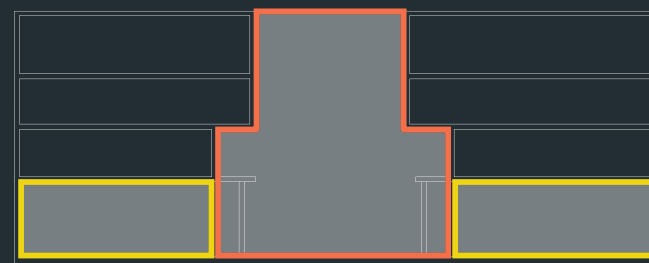
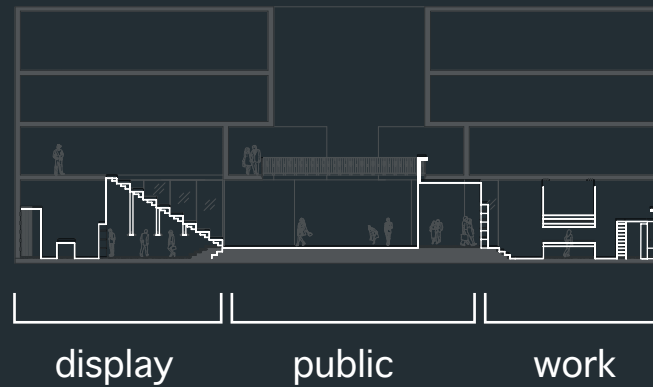


interior design studio | design for designer | advisor: arch. guy re moor | dina einstein | daniel siman-tov





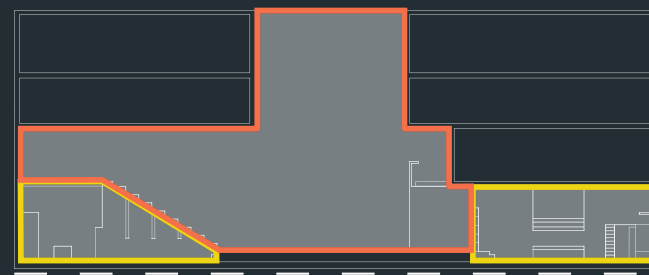


current

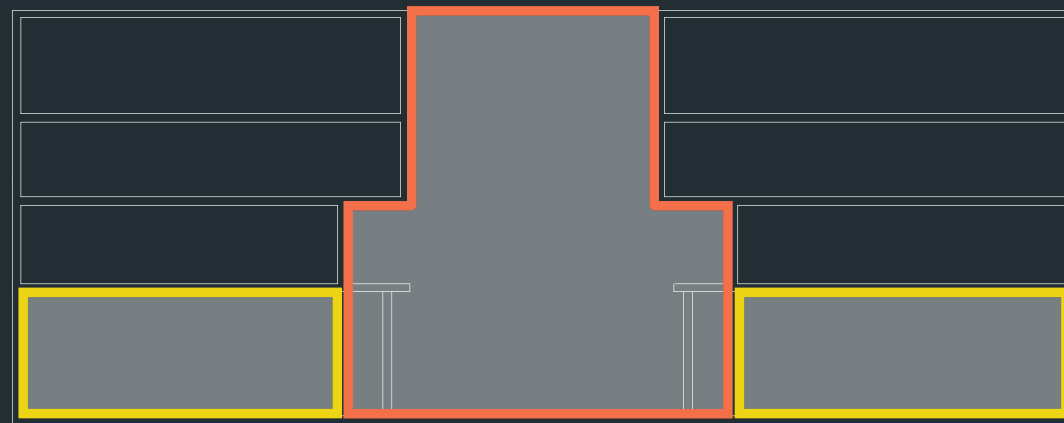


current

public 
commerce 



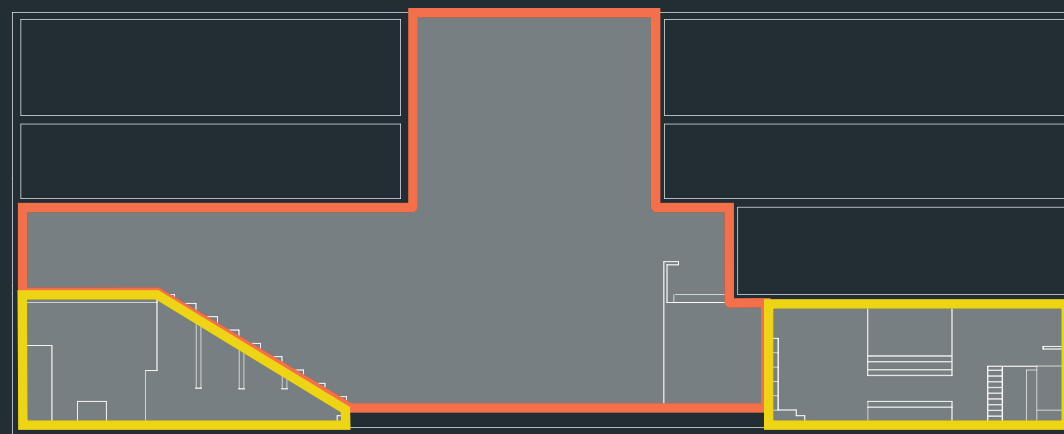
after the cut



70m²

90m²

70m²



55m²

140m²

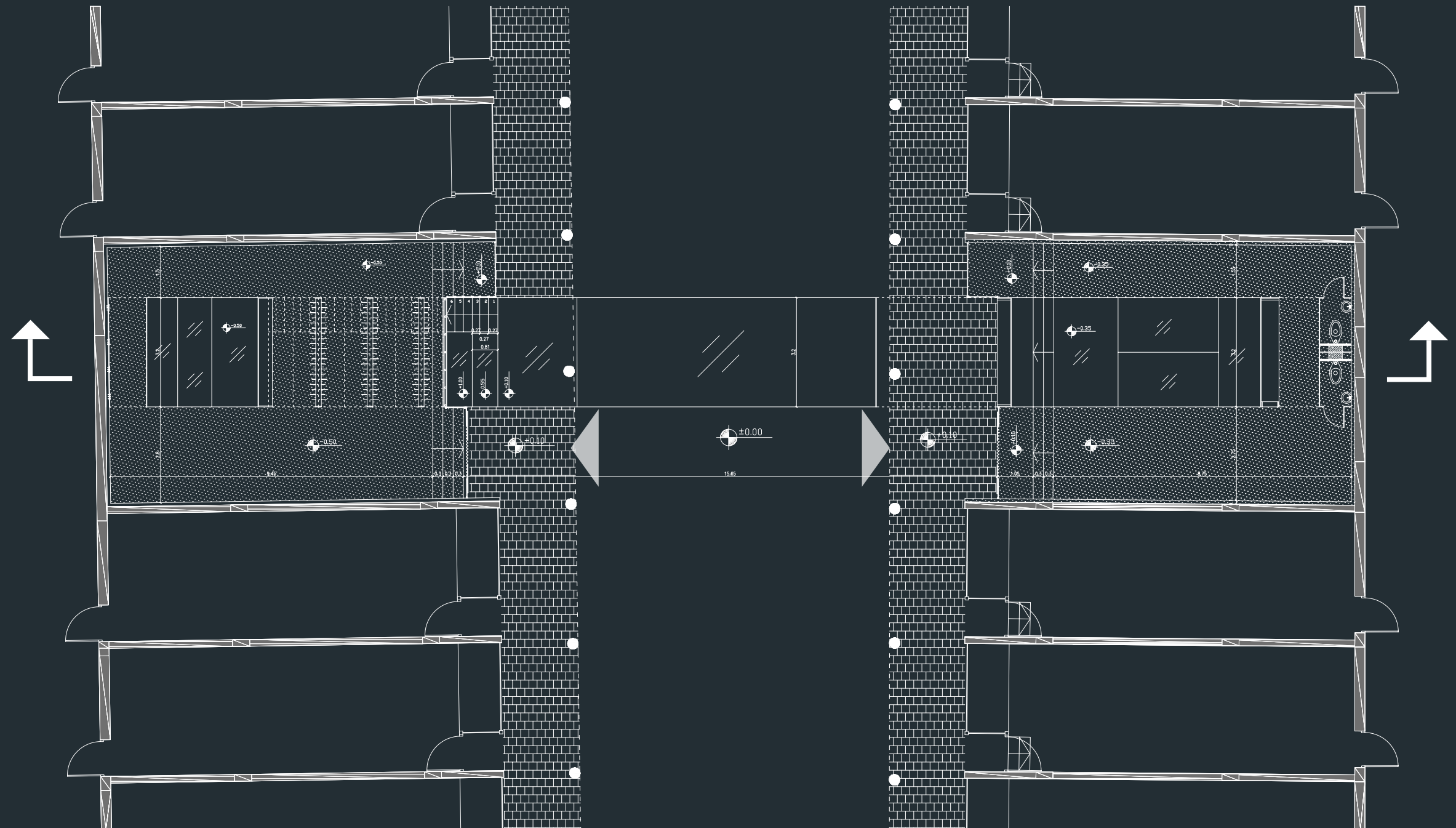
70m²

public



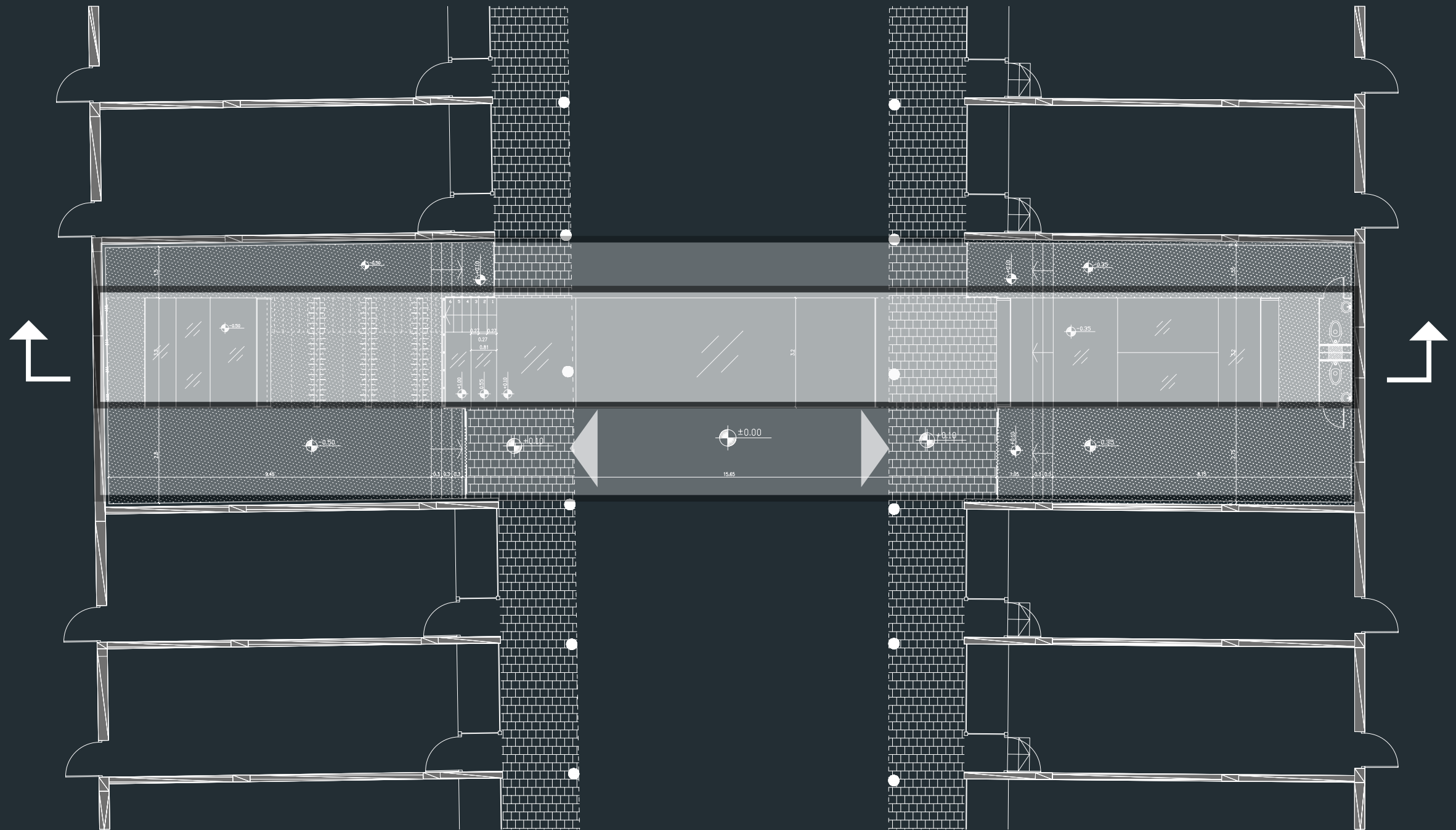
commerce



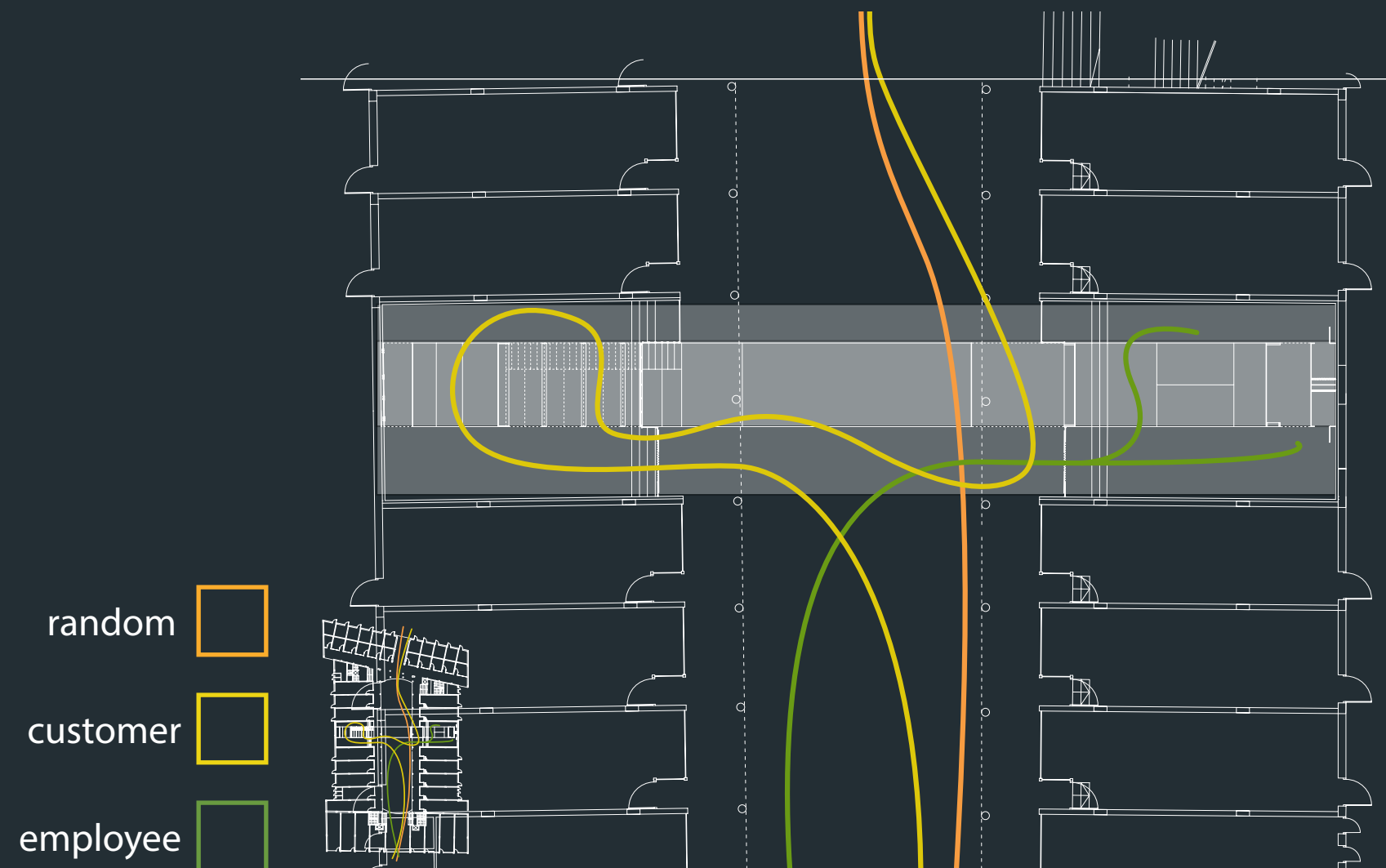


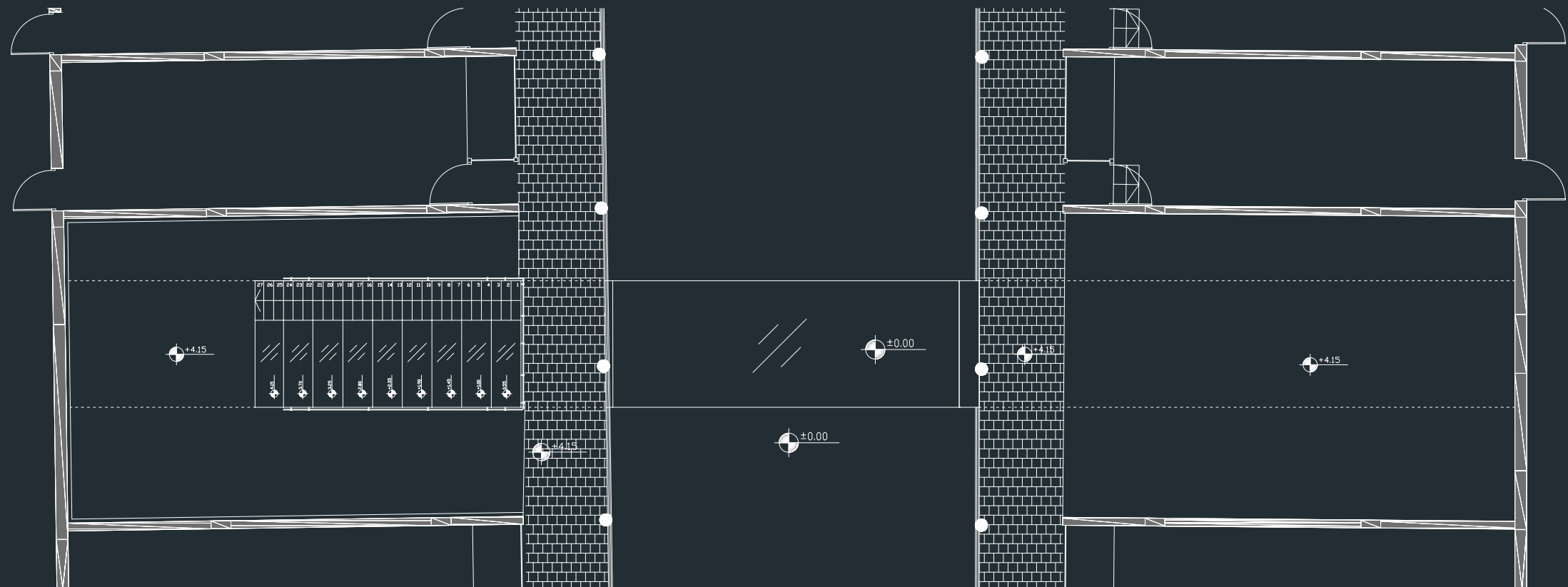
cutting-edge

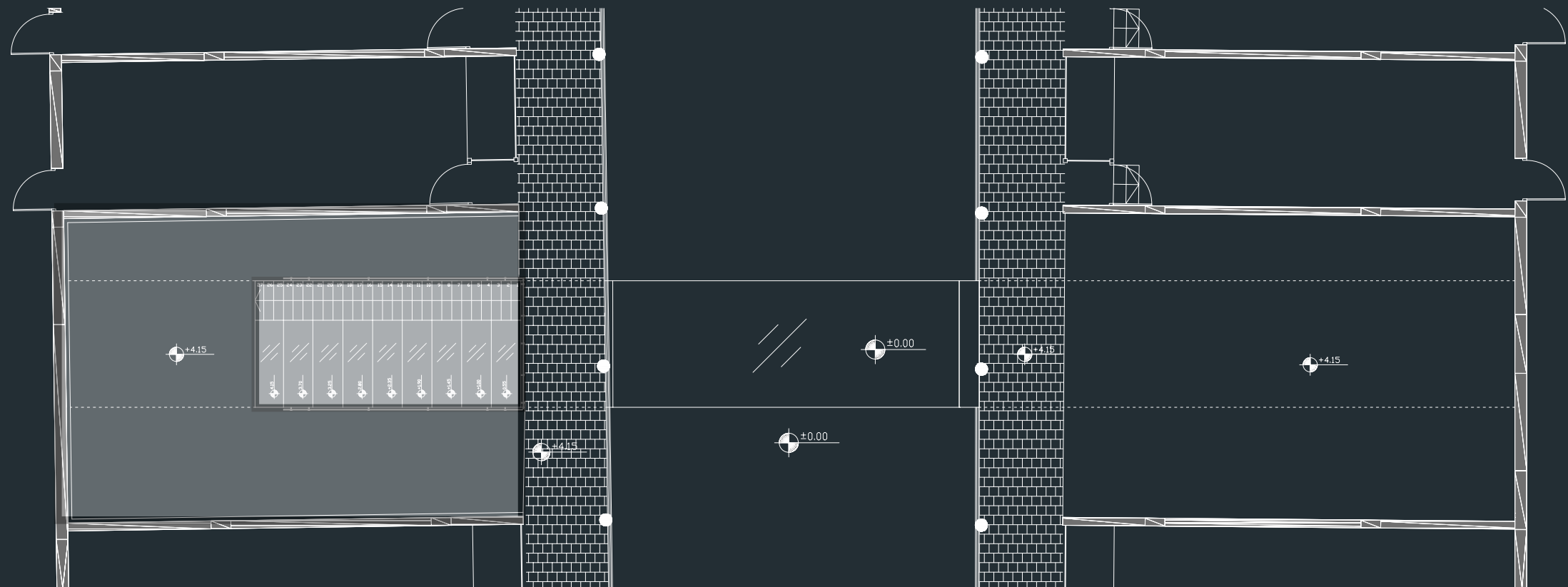
ground floor plan



interior design studio | design for designer | advisor: arch. guy re moor | dina einstein | daniel siman-tov







cuttingwedge

day scene



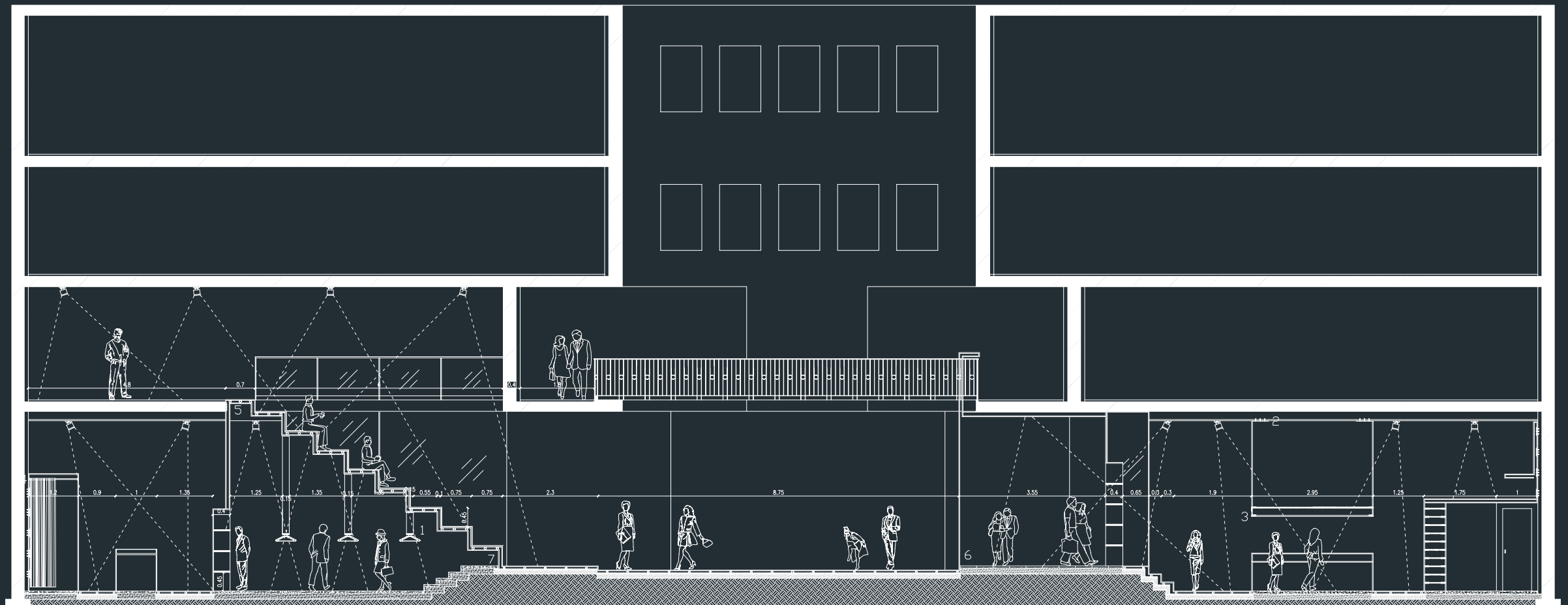
interior design studio | design for designer | advisor: arch. guy re moor | dina einstein | daniel siman-tov

cuttingJedge

night scene

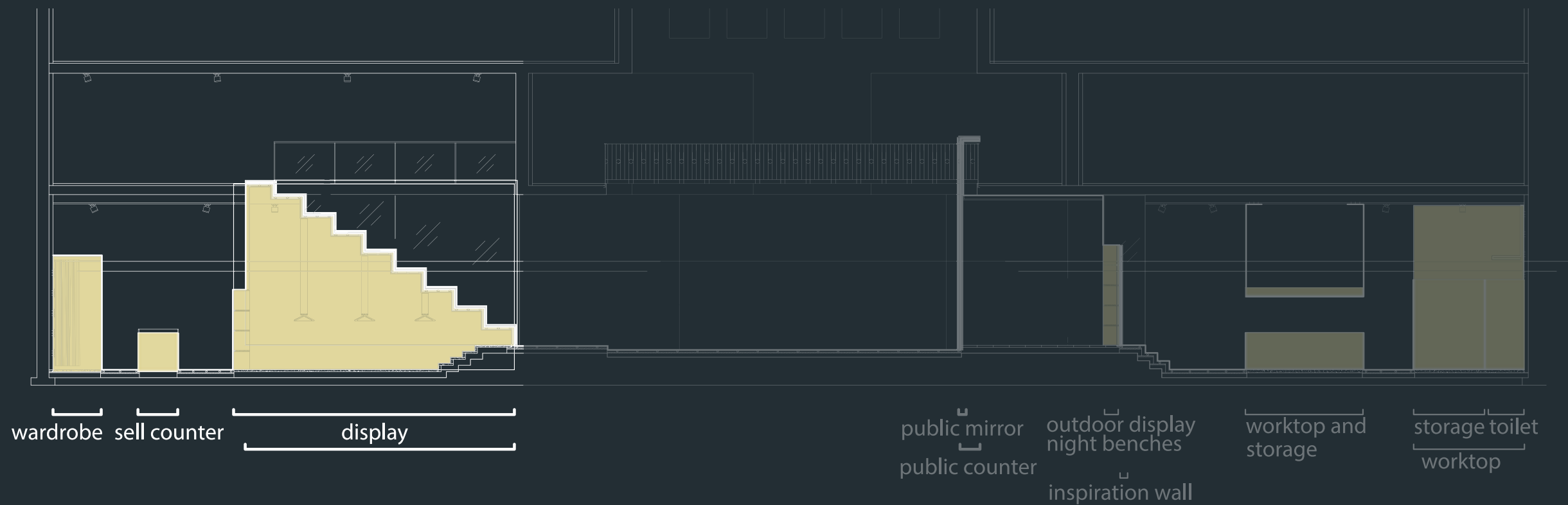


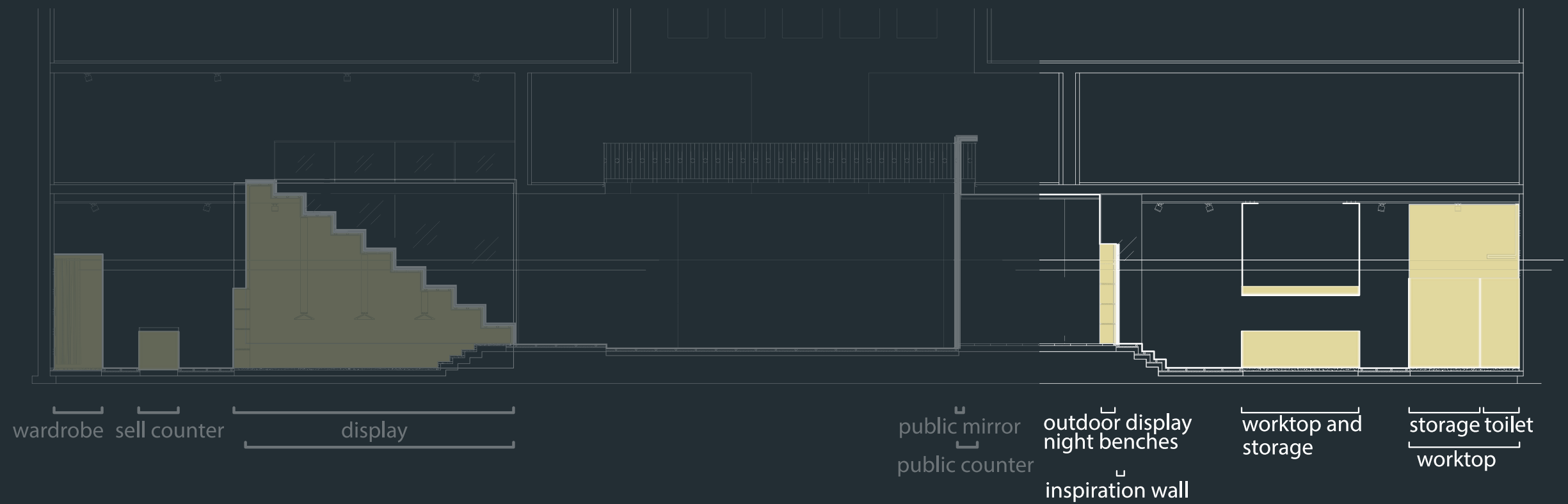
interior design studio | design for designer | advisor: arch. guy re moor | dina einstein | daniel siman-tov



cuttingwedge

functions

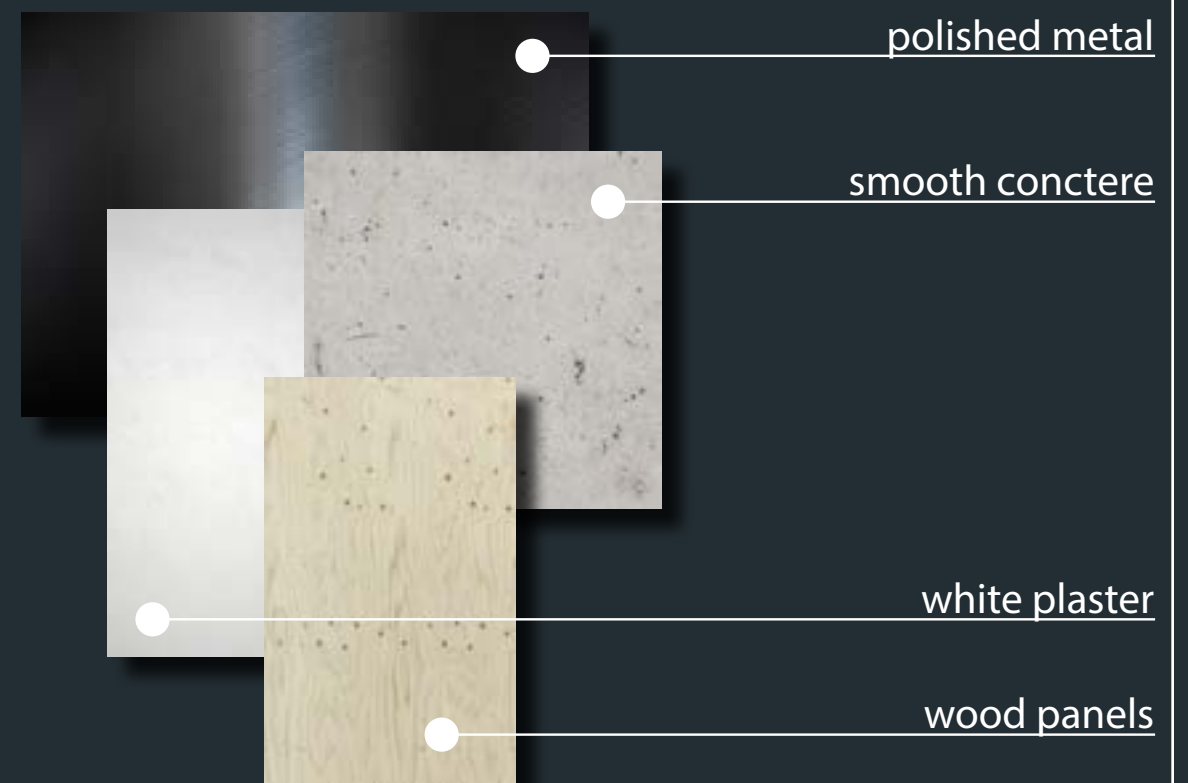




existing materials



additional materials

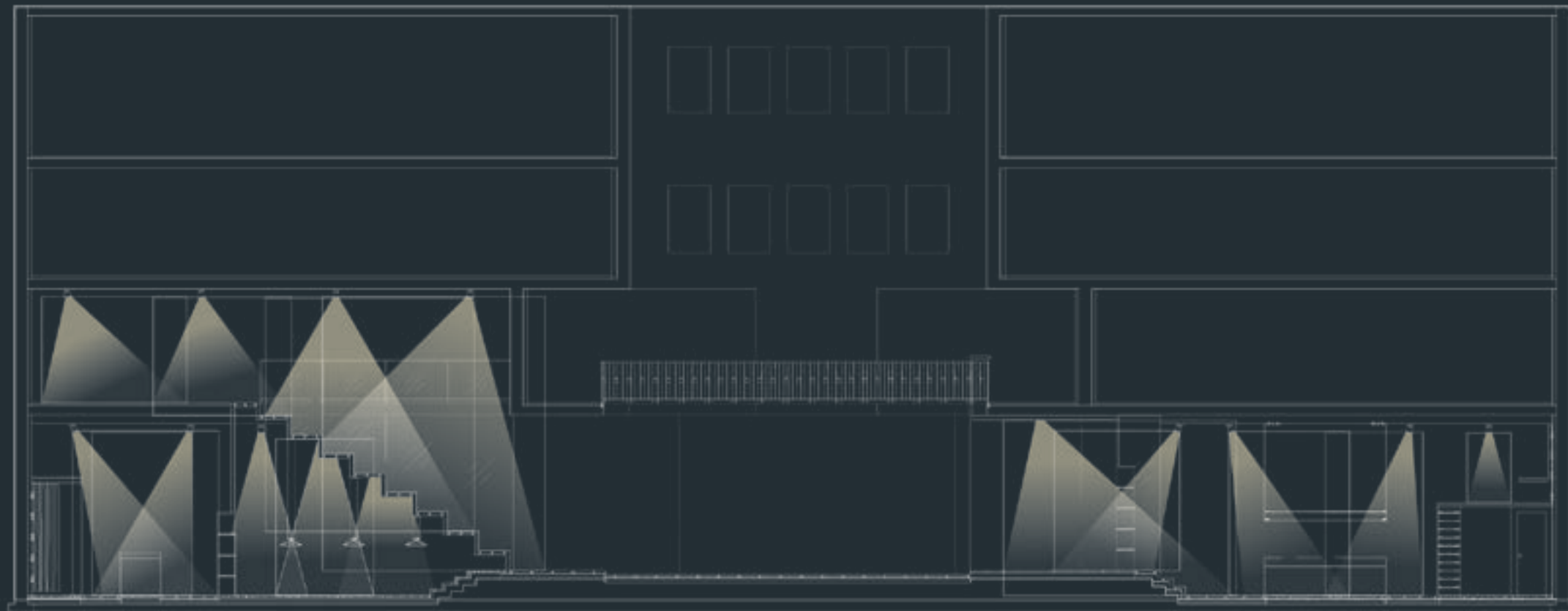


cuttingwedge

public mirror



interior design studio | design for designer | advisor: arch. guy re moor | dina einstein | daniel siman-tov



cuttingwedge

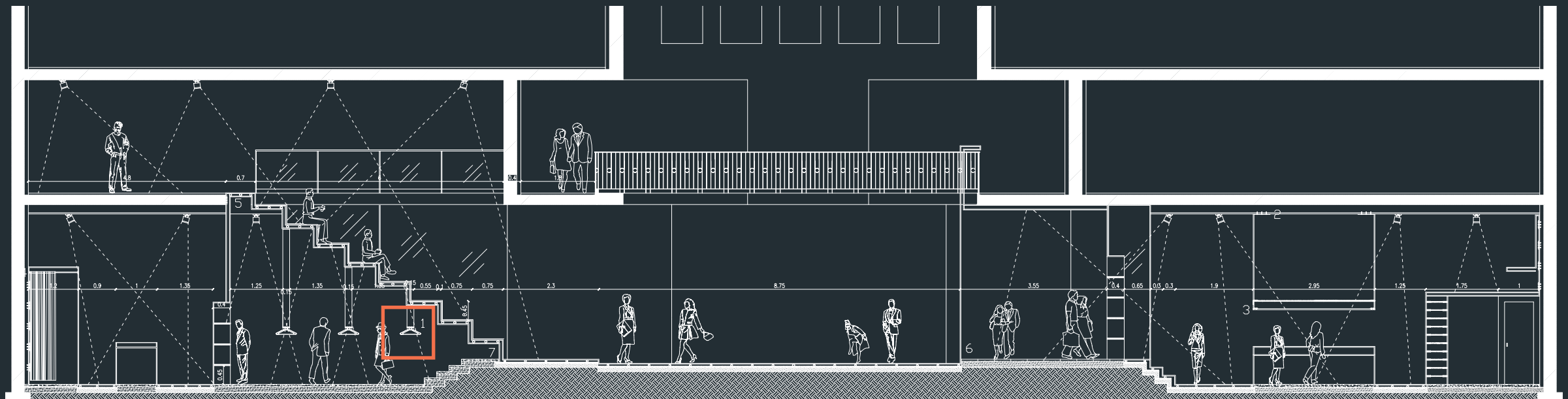
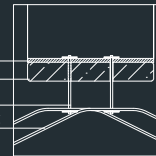
showroom



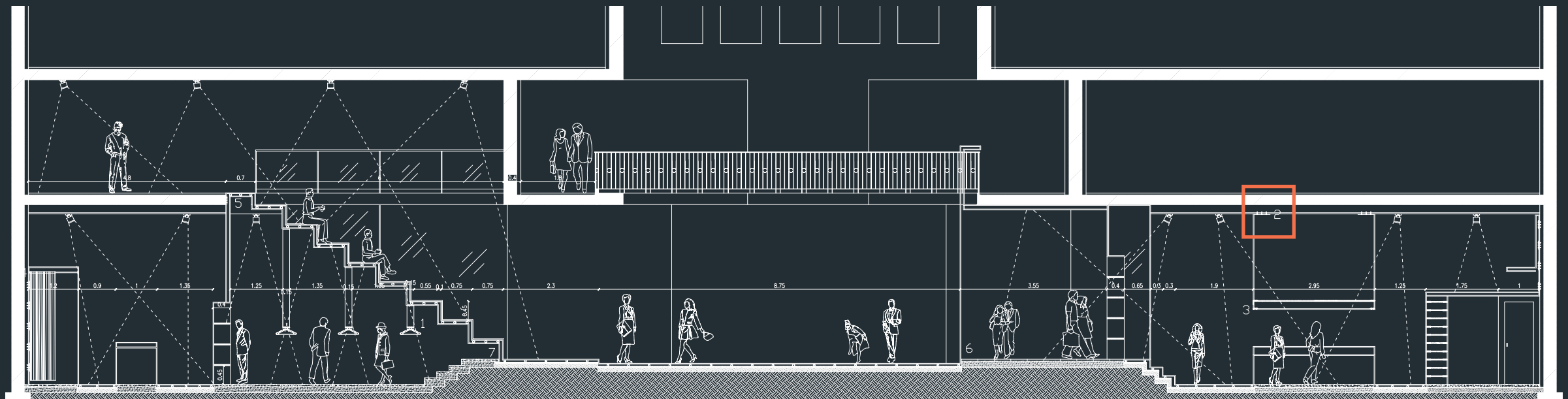
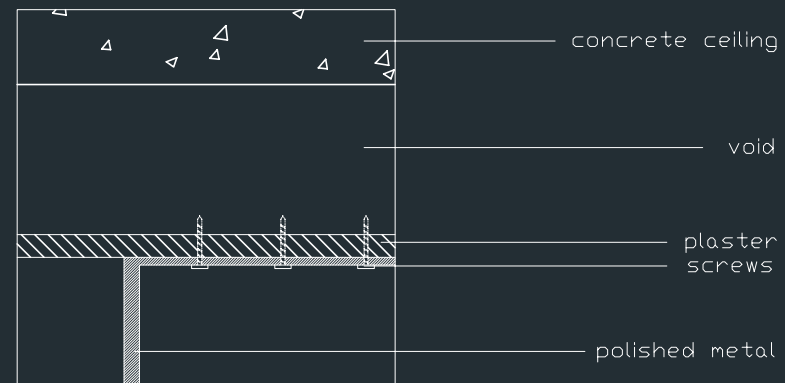
interior design studio | design for designer | advisor: arch. guy re moor | dina einstein | daniel siman-tov

1

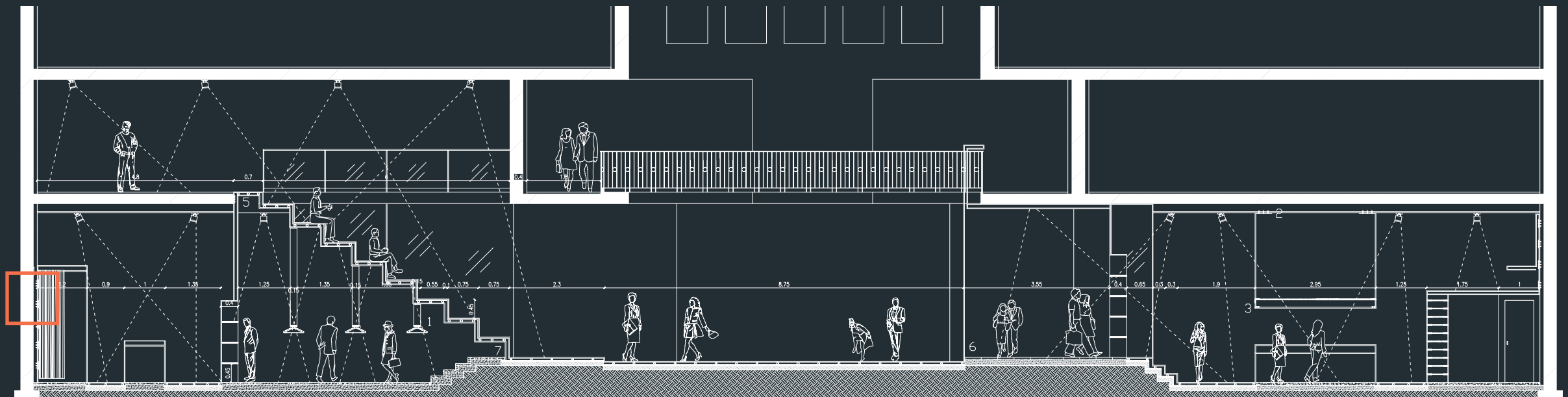
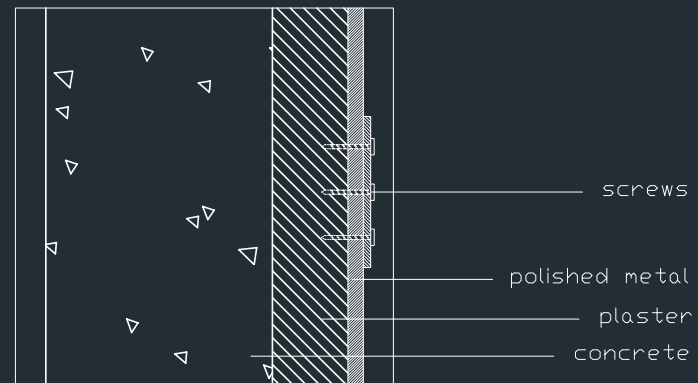
polished metal
wood panels
screws
built in metal hangers

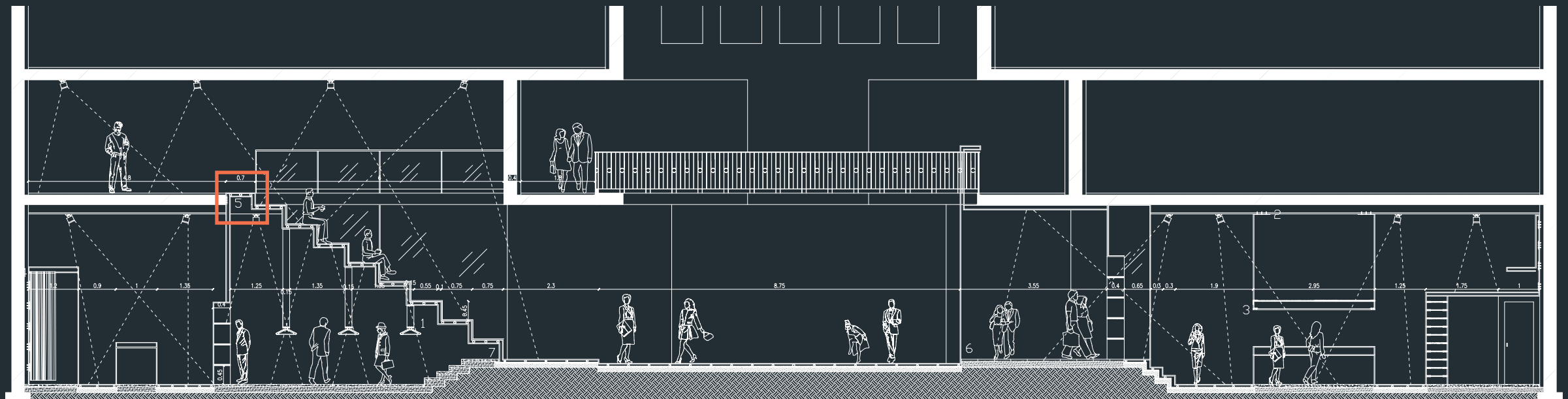
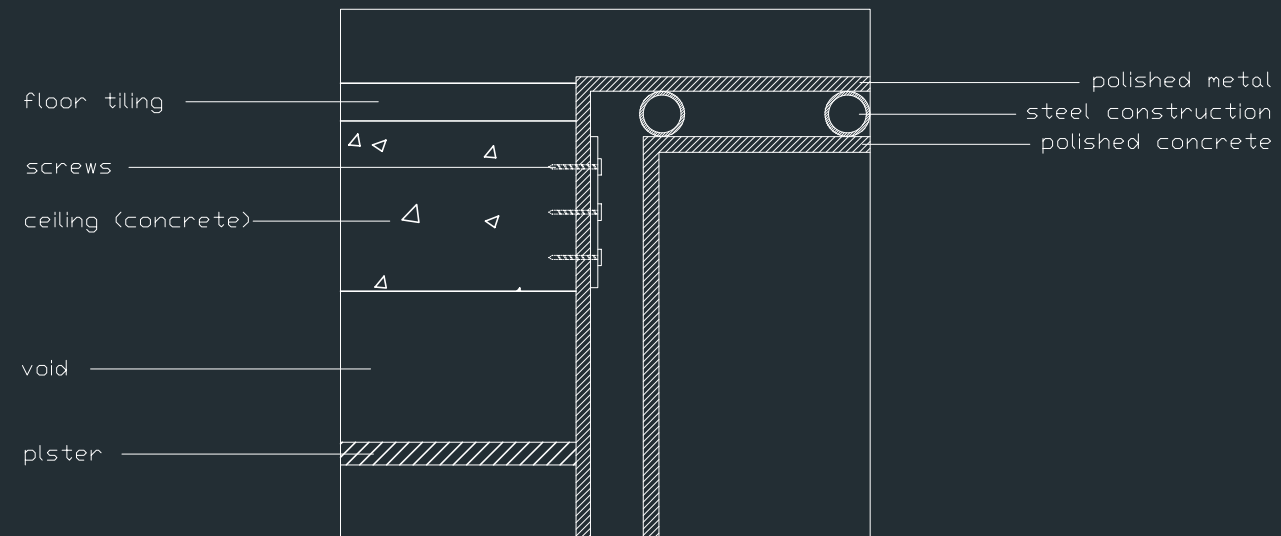


2



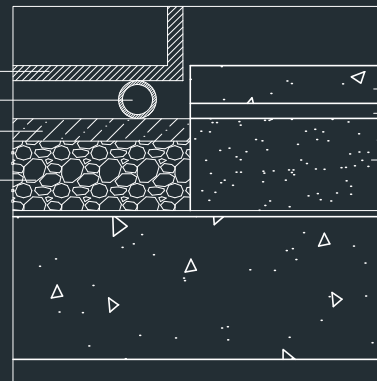
4



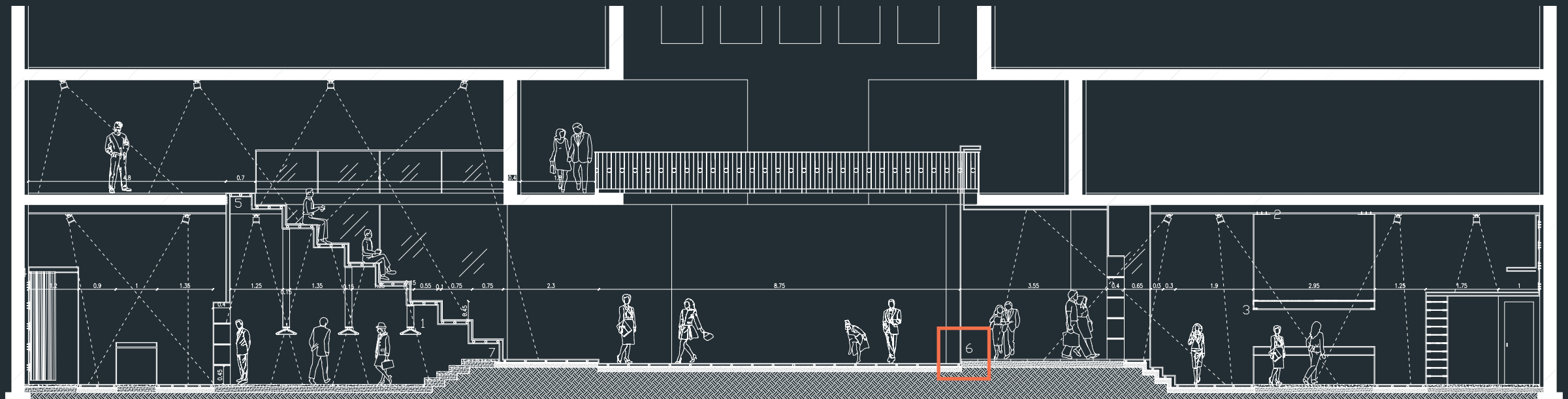


6

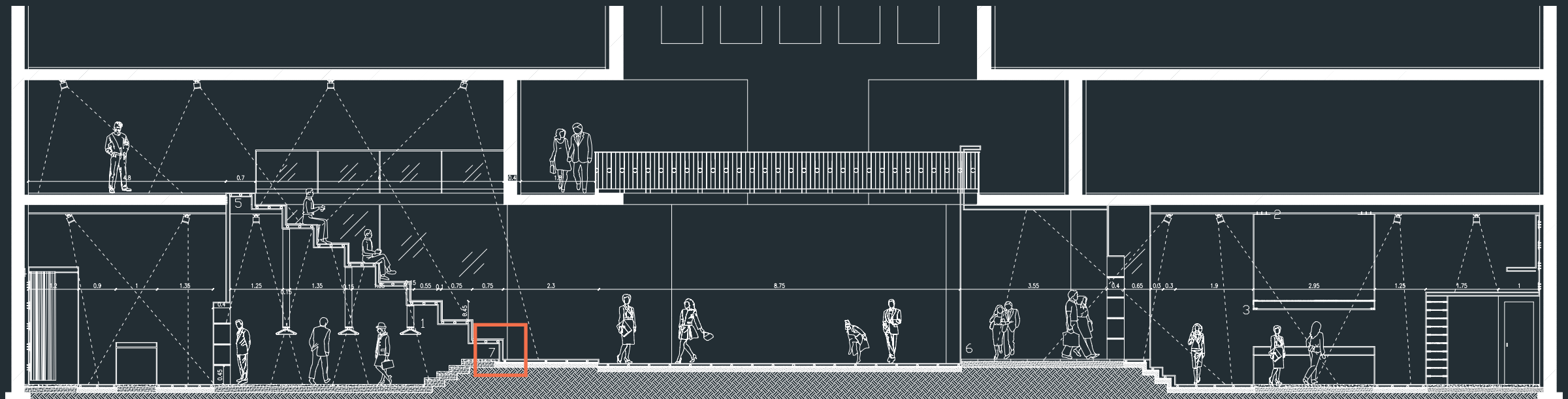
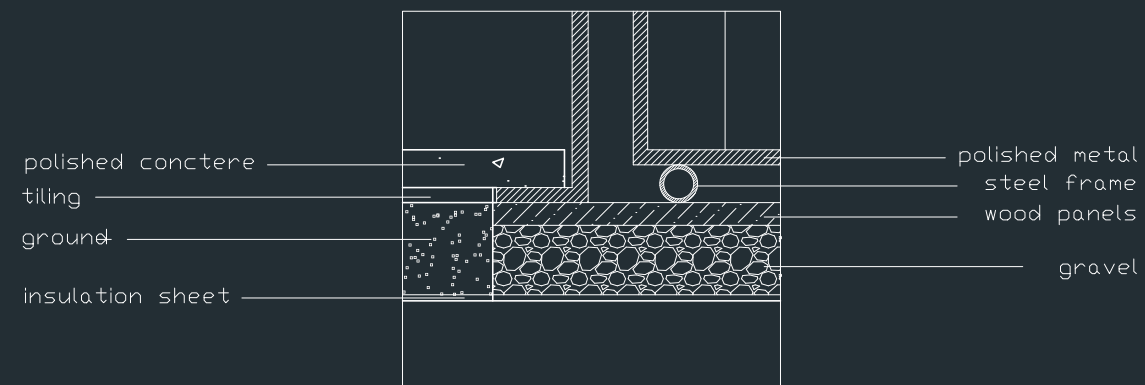
polished metal
steel construction
wood panels
ground



polished concrete
tiling
ground
insulation sheet
concrete



7



cuttingwedge



interior design studio | design for designer | advisor: arch. guy re moor | dina einstein | daniel siman-tov

cuttingwedge



interior design studio | design for designer | advisor: arch. guy re moor | dina einstein | daniel siman-tov

cuttingwedge



thank you

interior design studio | design for designer | advisor: arch. guy re moor | dina einstein | daniel siman-tov