

PHOTOGRAPHER'S

Studio and residence

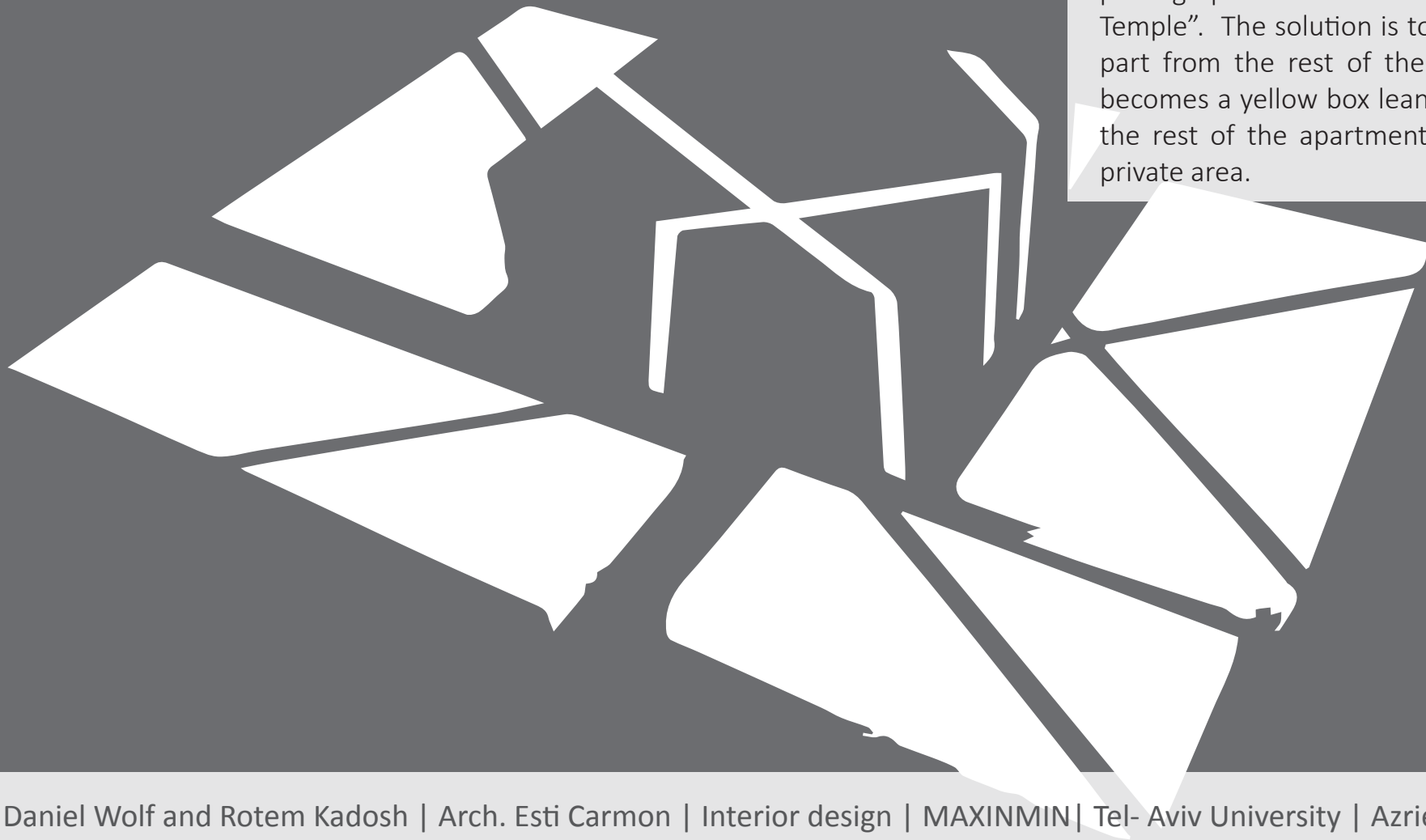
A stylized, hand-drawn style icon of a camera, positioned to the right of the text. It features a thick black outline for the body and a spiral lens.

Program



Conceptual model #1

Our customer is a fashion photographer, 28 years old, that takes photos from his apartment. The main problem in this kind of apartment is the photographers privacy. We wanted to create a “center” in the apartment that will be the private area. Only the photographer will enter this area. We called it “The Temple”. The solution is to separate the most private part from the rest of the apartment. The bedroom becomes a yellow box leaning out of the building.. All the rest of the apartment will be influenced by the private area.





Site selection





Site selection



Shlavim st'

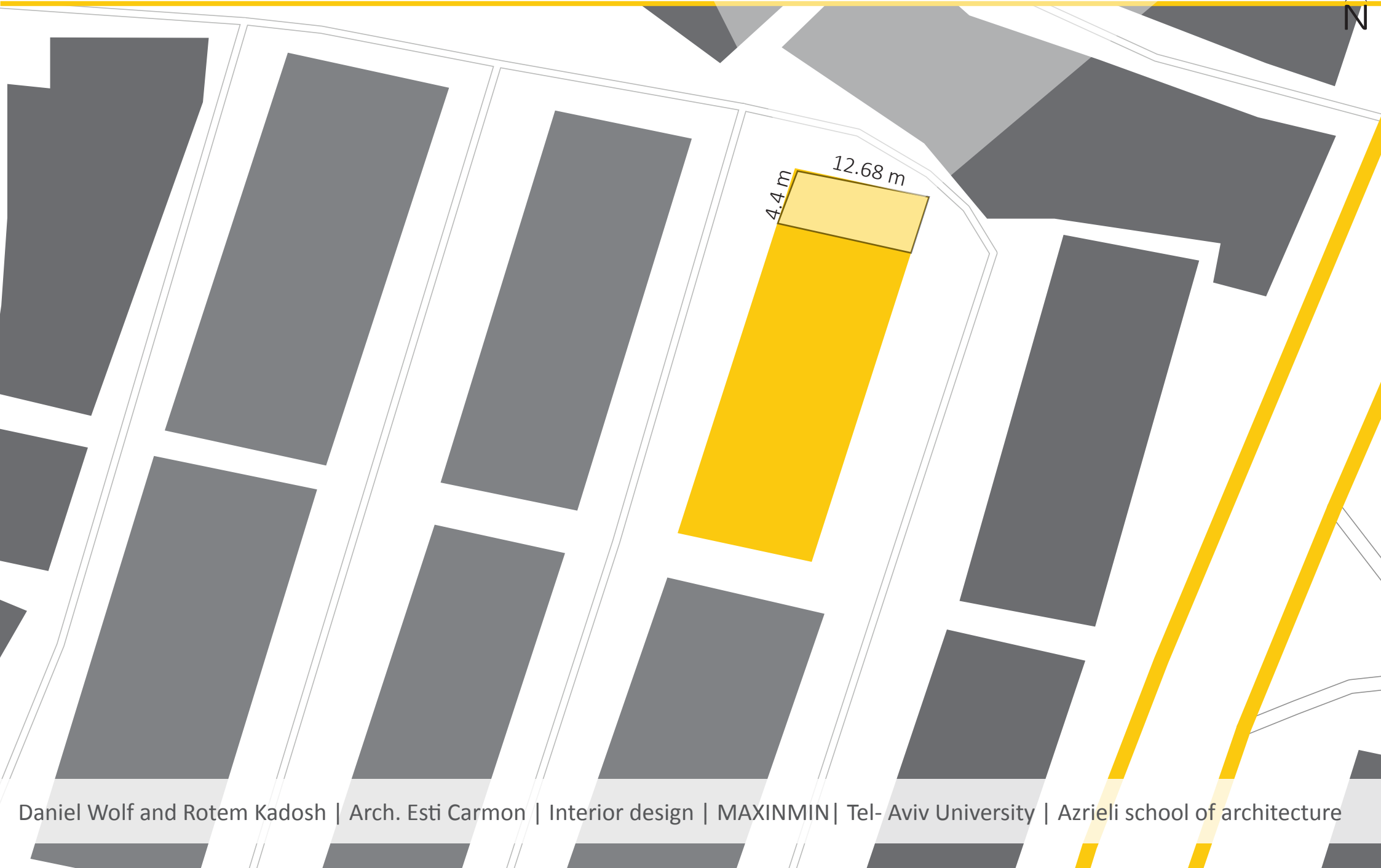
Har- Zion av'

קיבוץ גלויות

Site selection

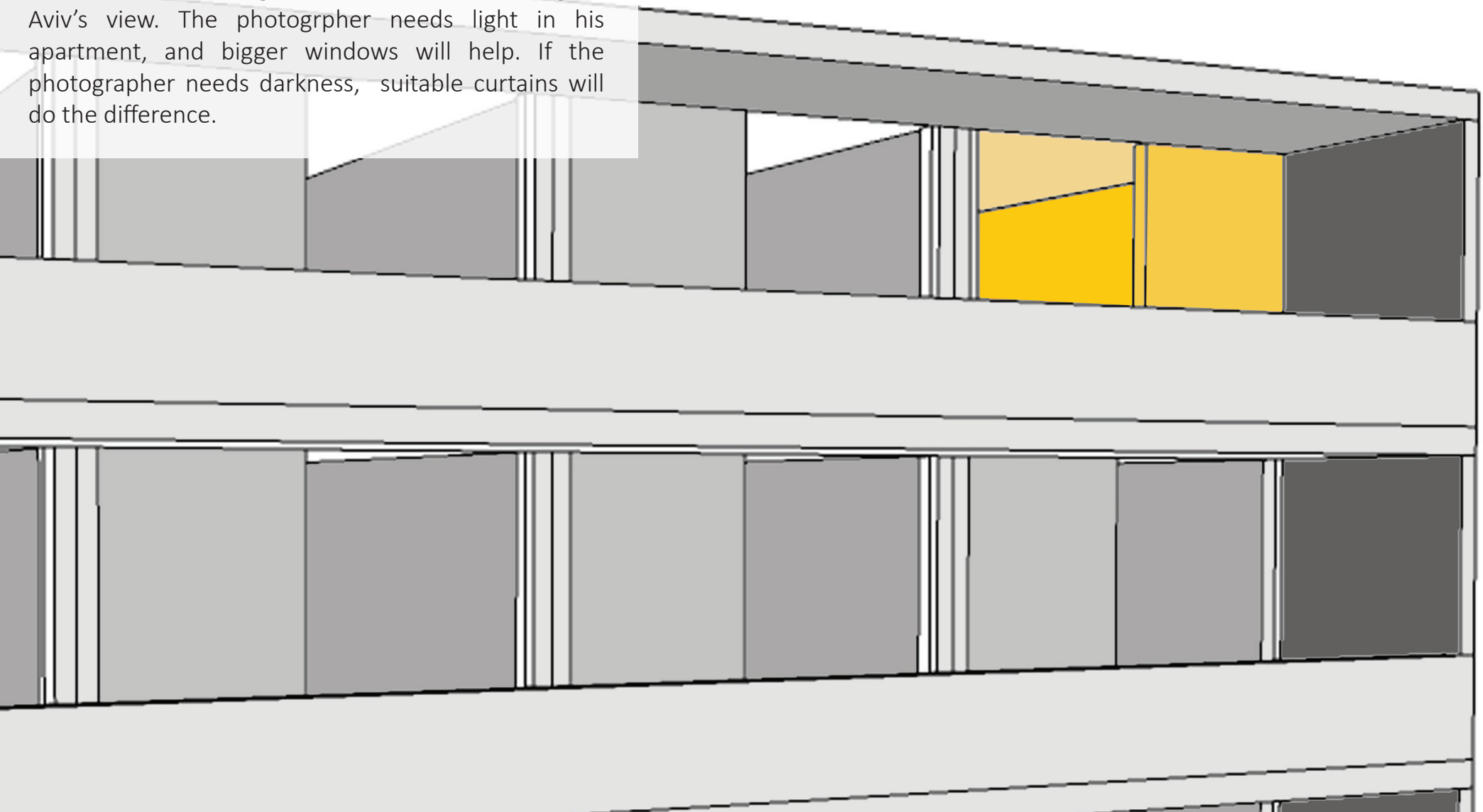


Site selection

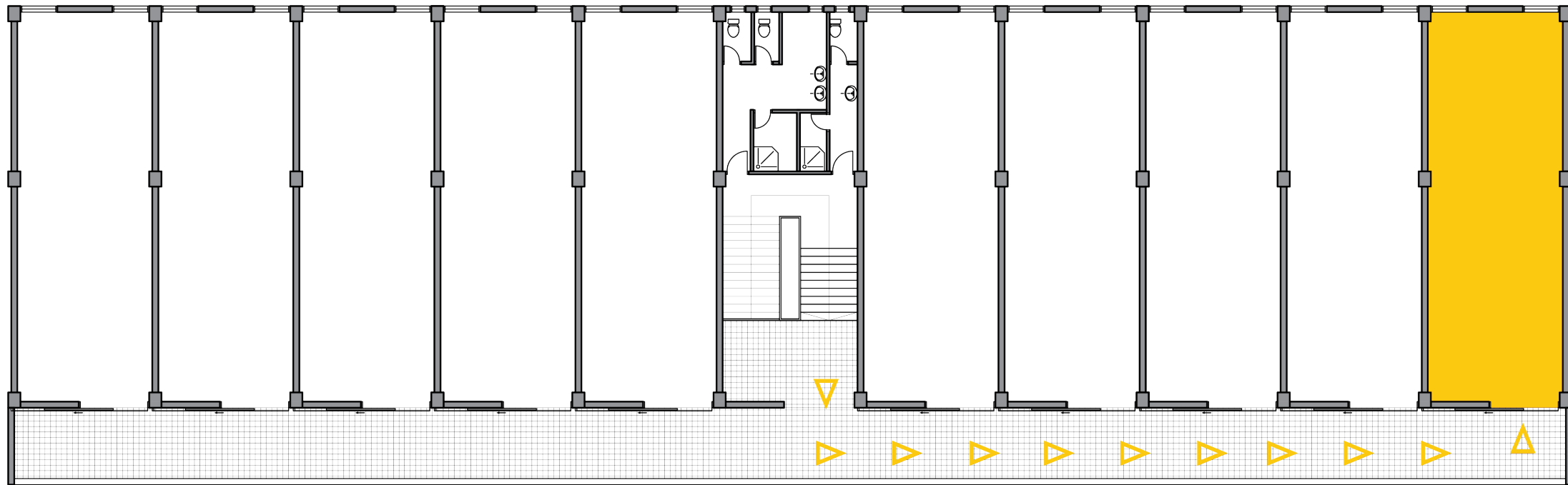


Site selection

We have chosen the corner apartment, so we can use the side facade for big windows that are watching Tel Aviv's view. The photographer needs light in his apartment, and bigger windows will help. If the photographer needs darkness, suitable curtains will do the difference.



Floor plan



Site selection

Northern façade



Site selection

North view



Materials

Local materials

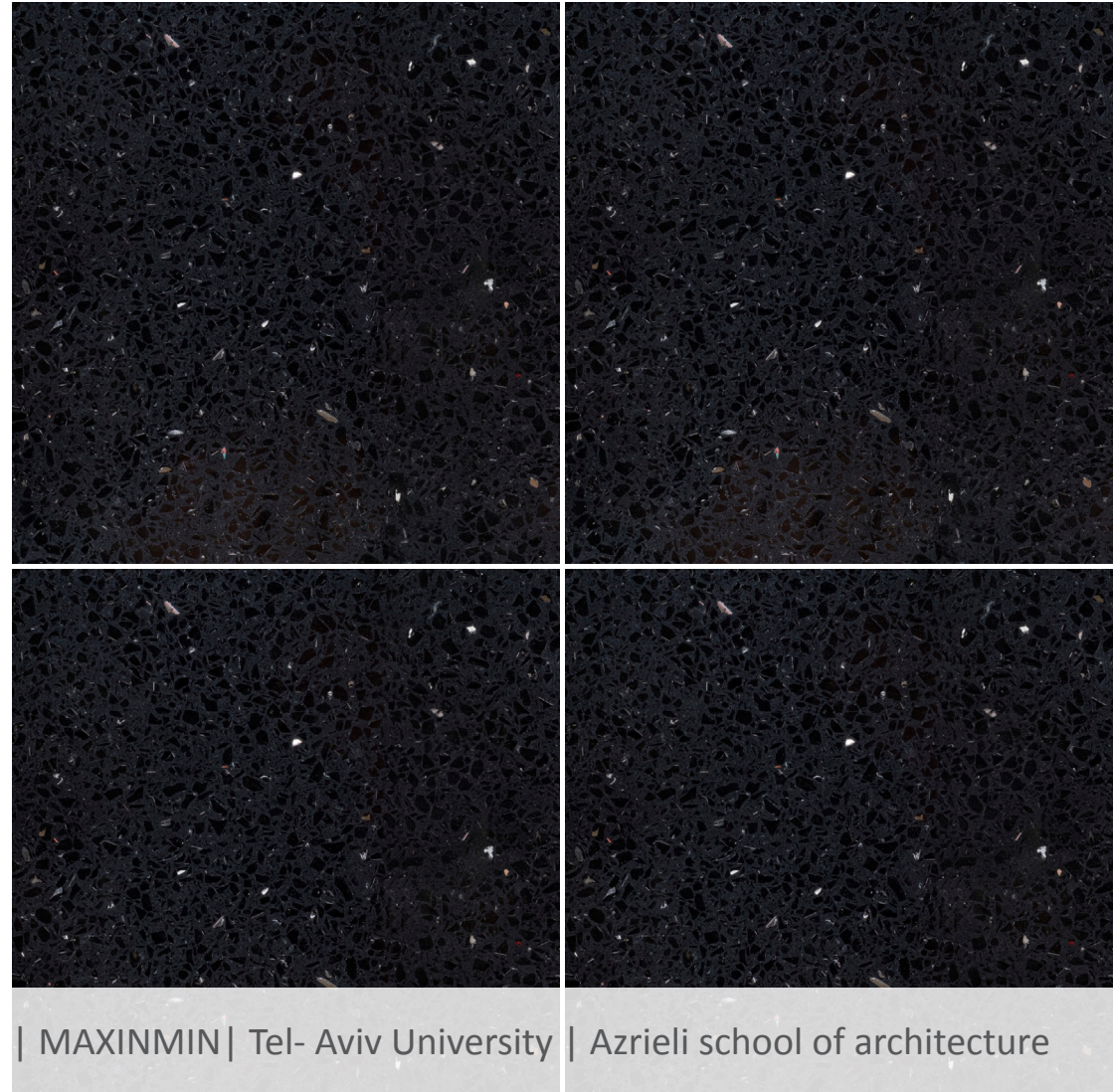
The material selection is inspired by the industrial area where the studio is located. This industrial touch lends the apartment a masculine, modern, yet warm vibe. We loved the roughness that matched our tenant, and We took these materials and processed them to young and colorfull materials.



Materials

Local materials

Terazzo floor
casting



Materials

Local materials



HPL pannels
Interior walls

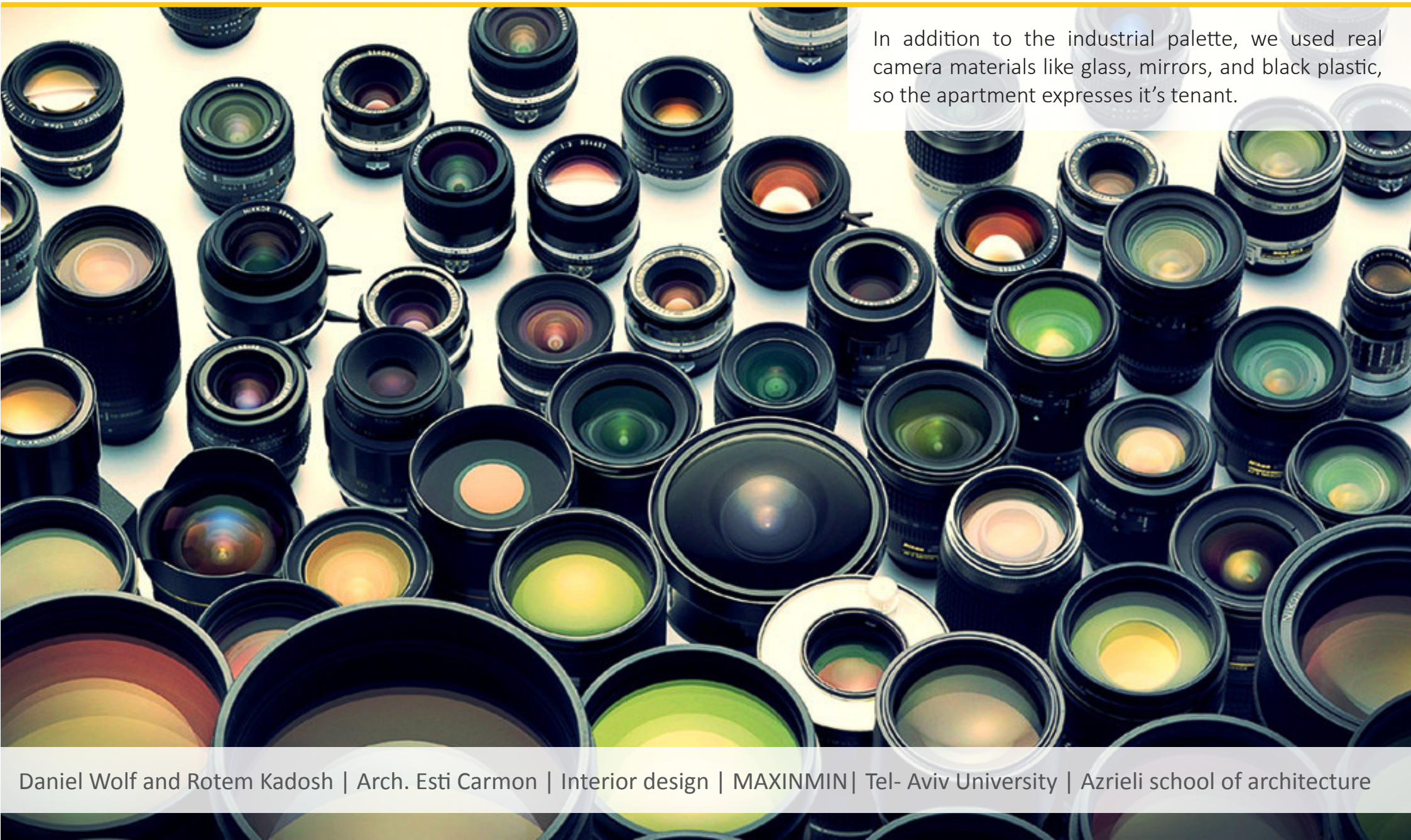
Materials

Local materials



*using industrial rails
for lighting*

The camera as inspiration



In addition to the industrial palette, we used real camera materials like glass, mirrors, and black plastic, so the apartment expresses it's tenant.

Camera materials

polycarbonate & glass fiber

Mirror

Bouncing glass

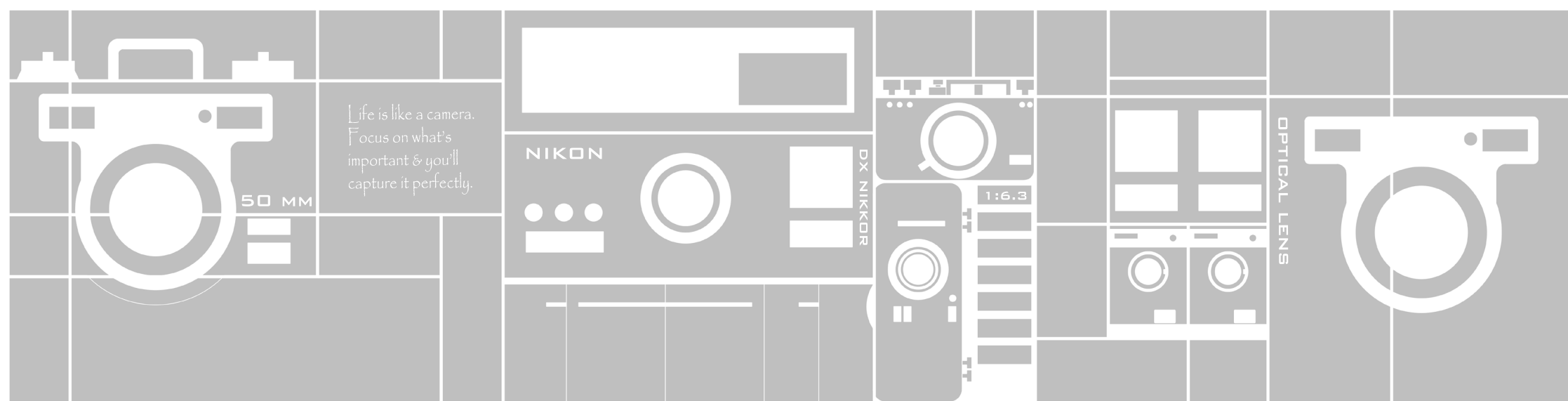


The camera as inspiration

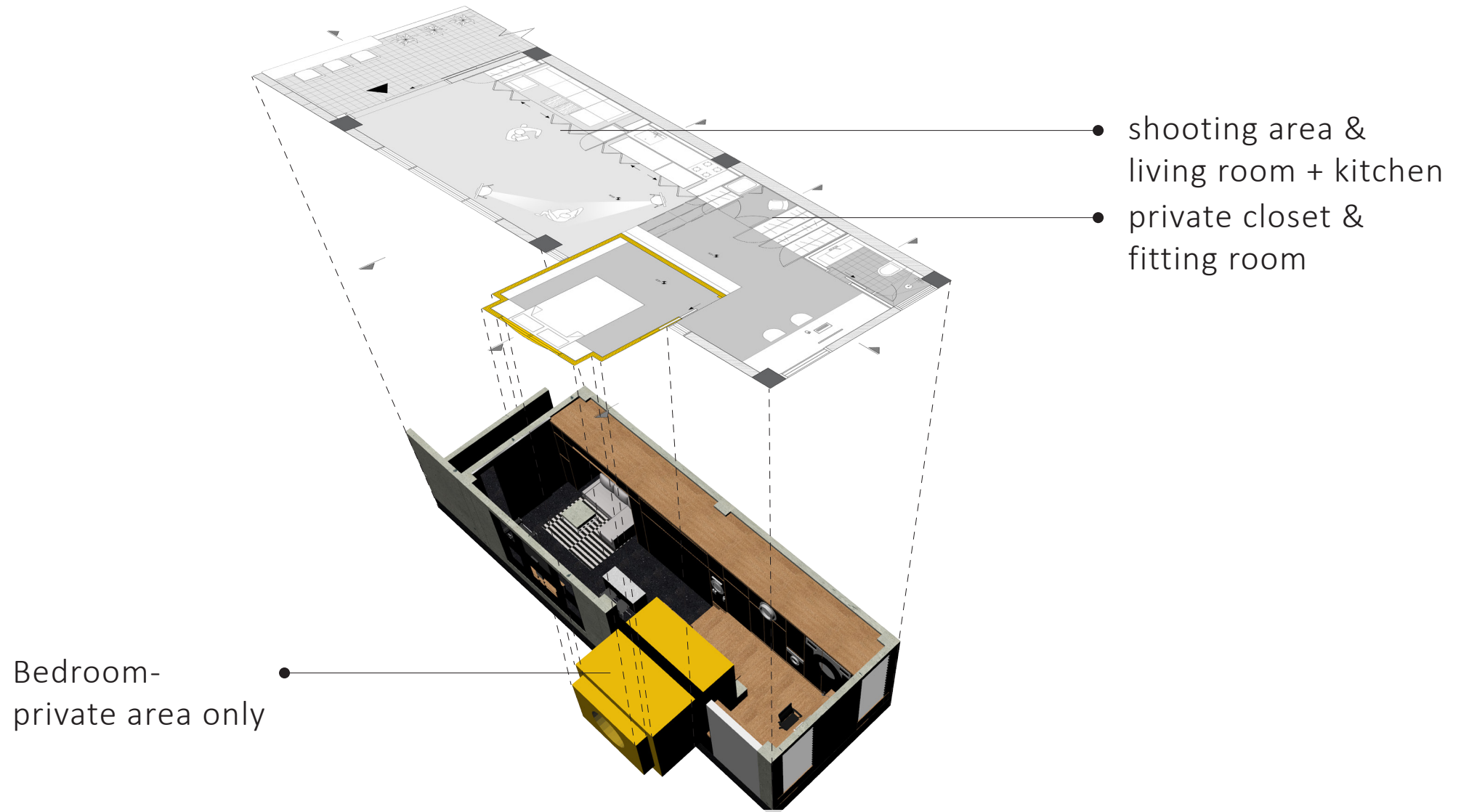


The camera as inspiration

Besides the bedroom which serves only our tenant, the rest of the apartment has to be dynamic and function as a studio during day time, and a living space during night time. The apartment is long and narrow. We used this disadvantage and turned it into an advantage by placing a closet along the wall which contains all the functions and can be fully closed or fully open.

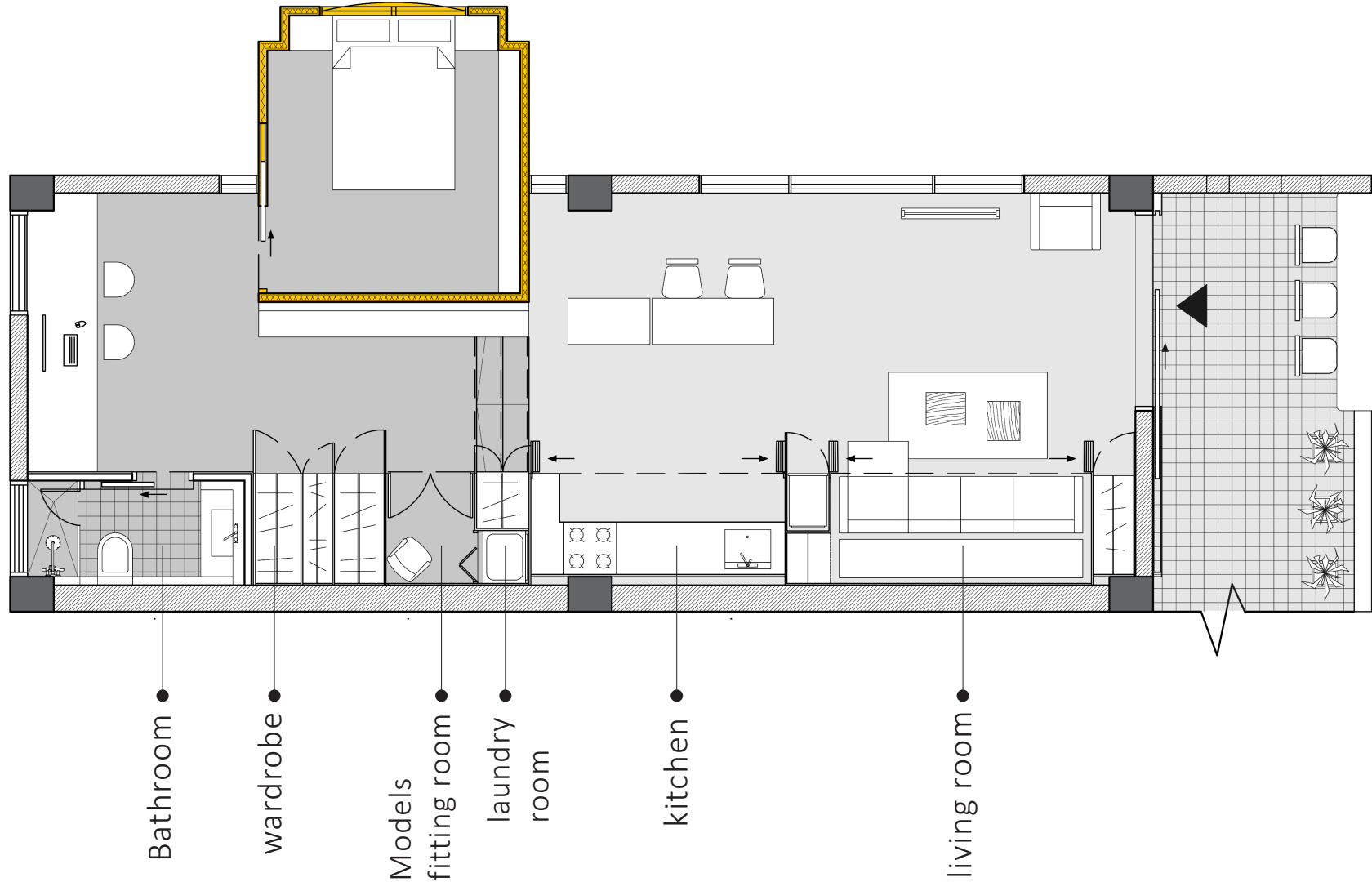


Two functions in one apartment



Plan 1

open- private use



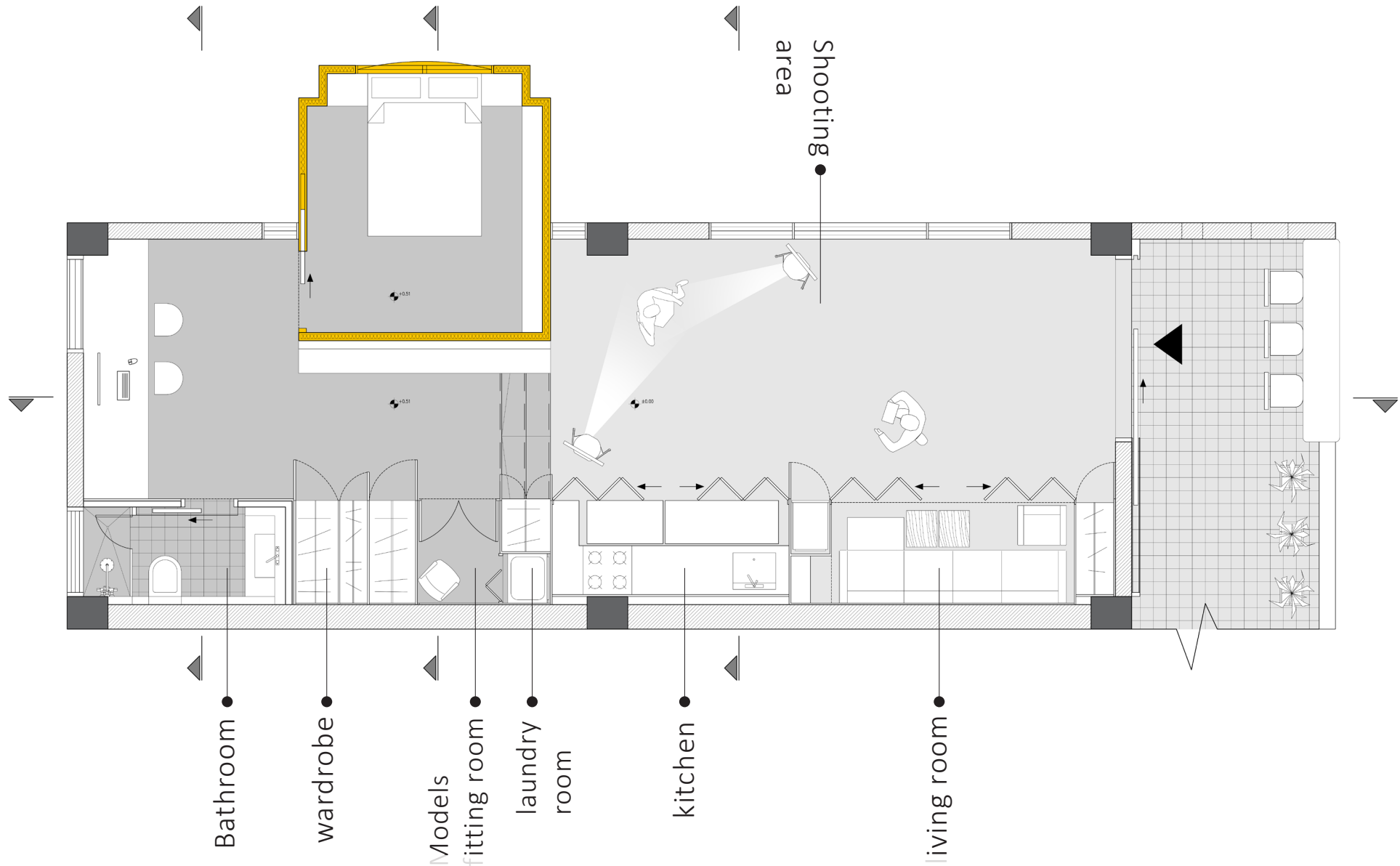
View

open- private use



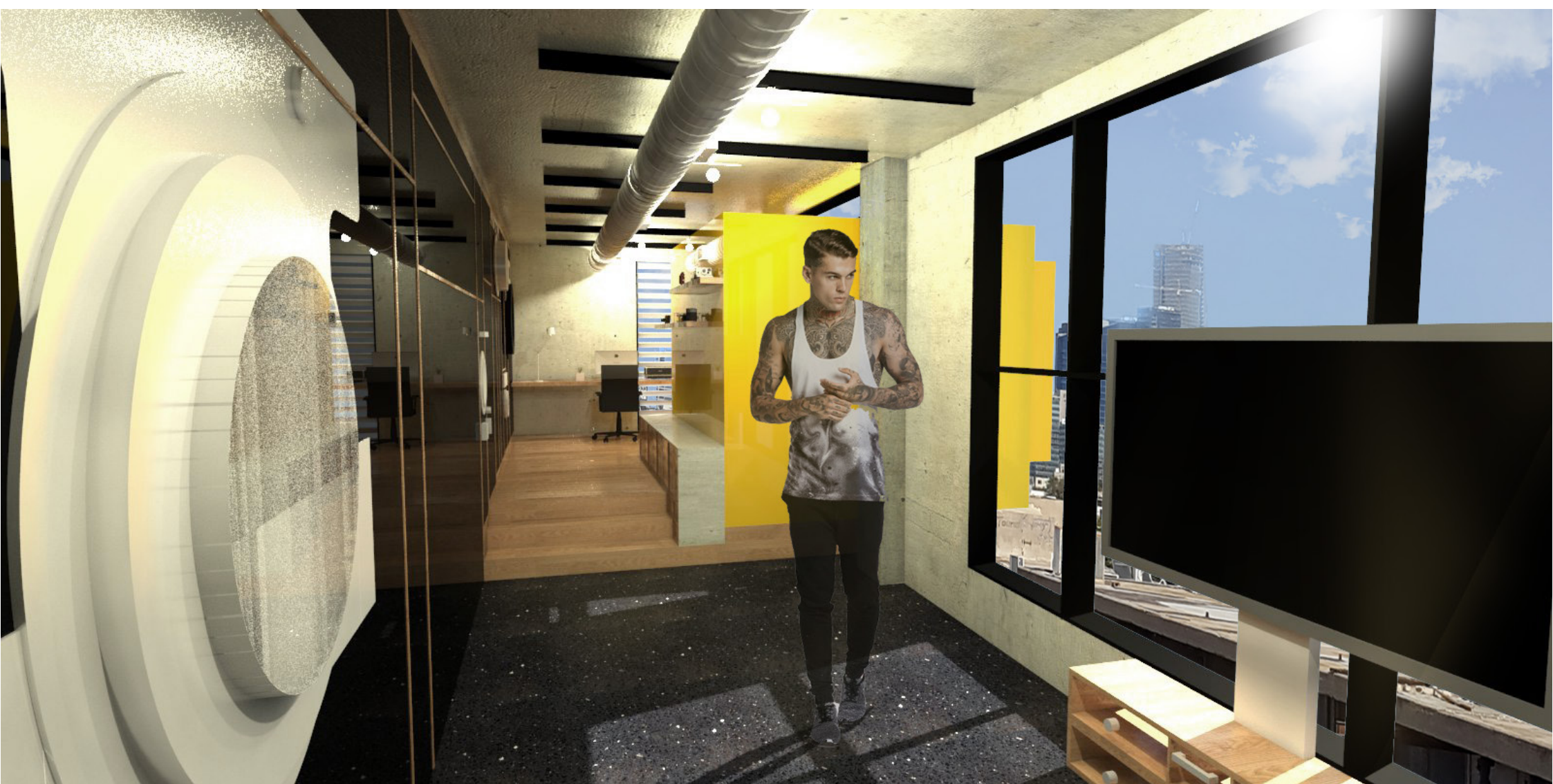
Plan 2

closed- "public" use



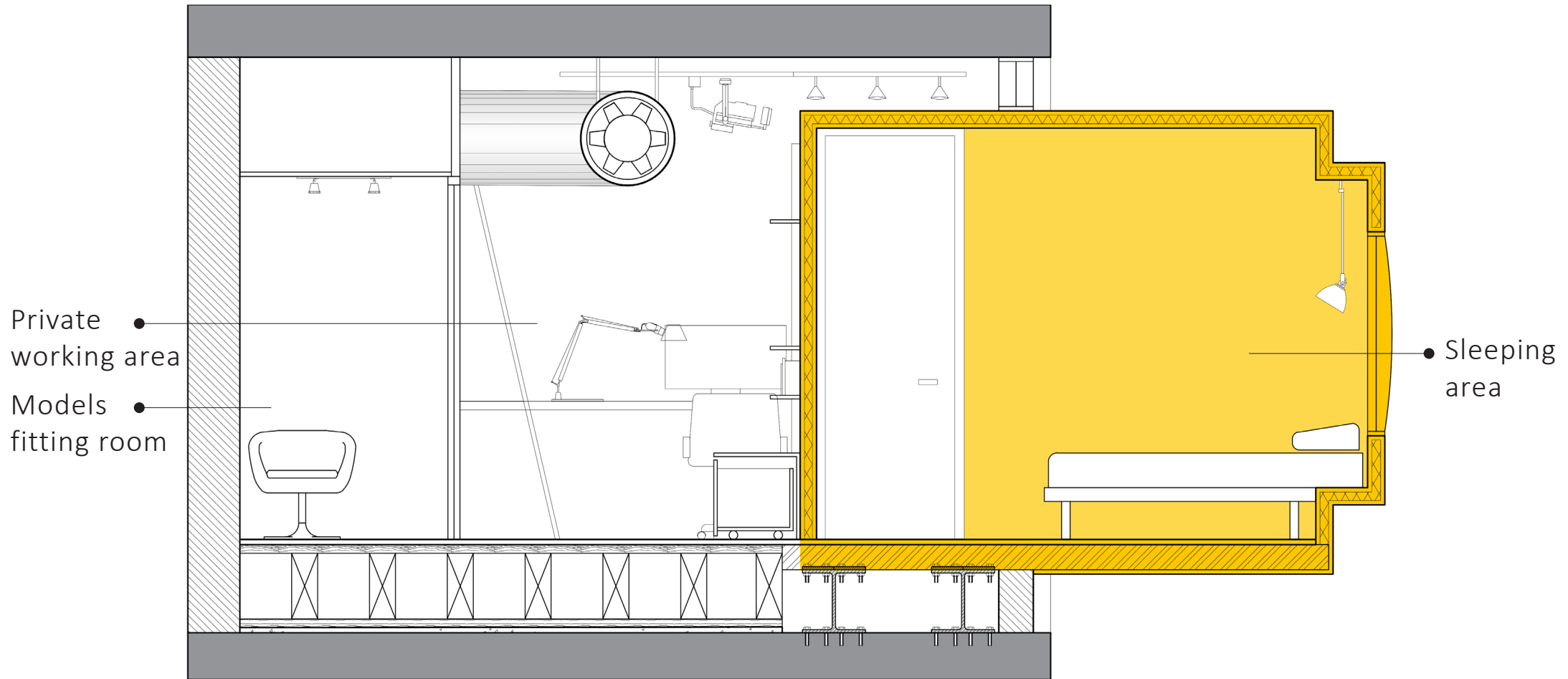
View

closed- “public” use



Section 1

the bedroom & fitting room



View

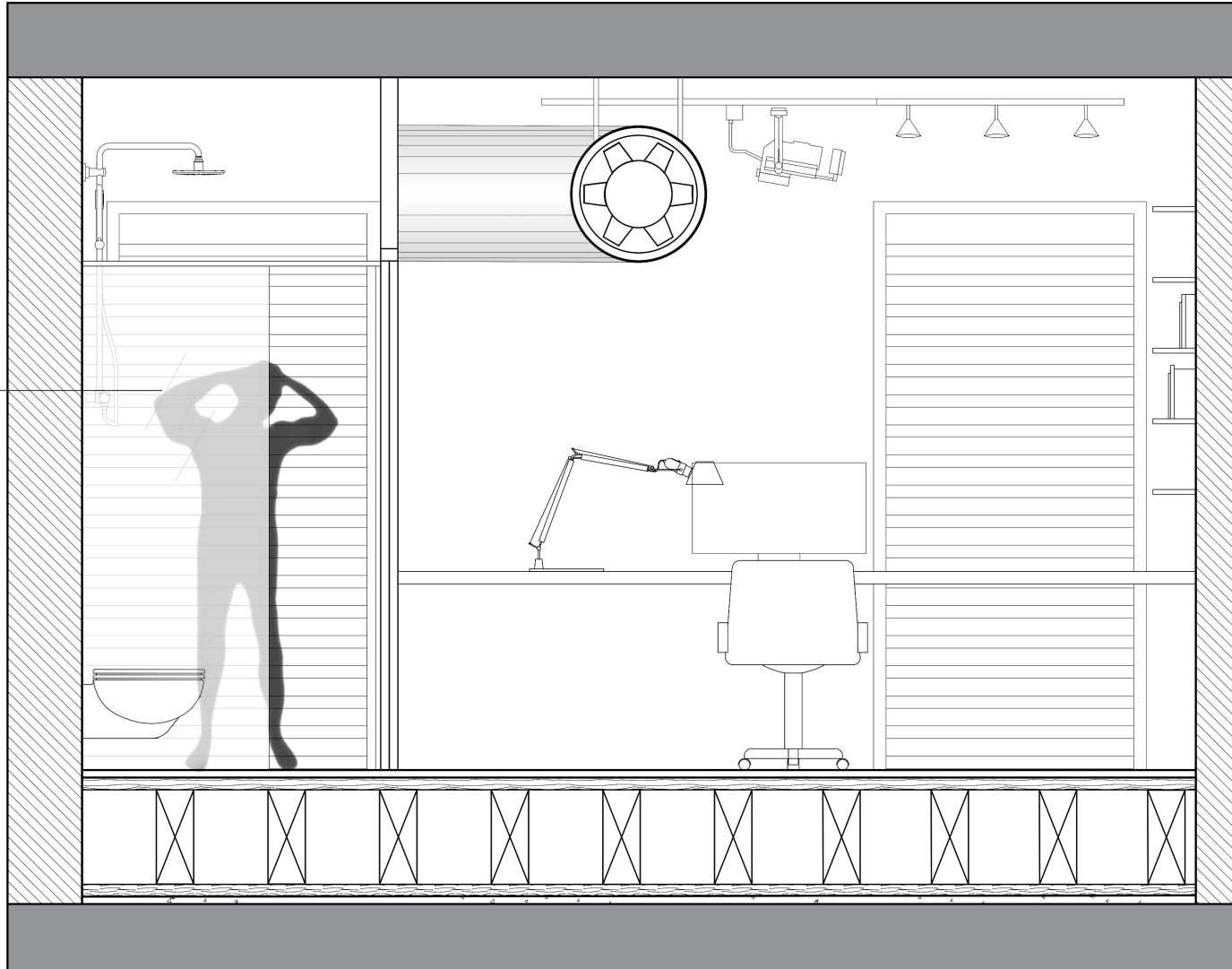
working area



Section 2

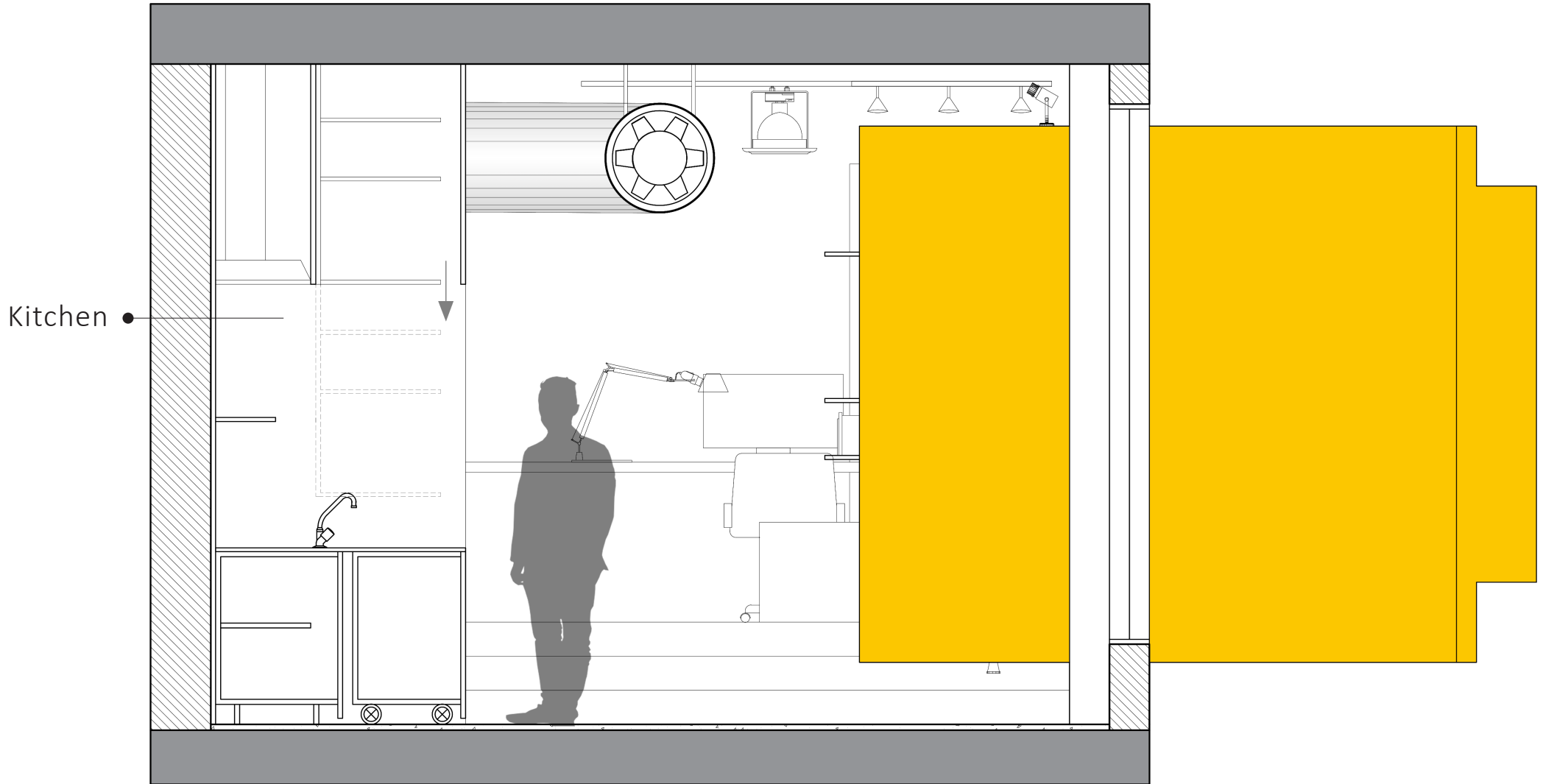
bathroom

Bathroom •



Section 3

kitchen

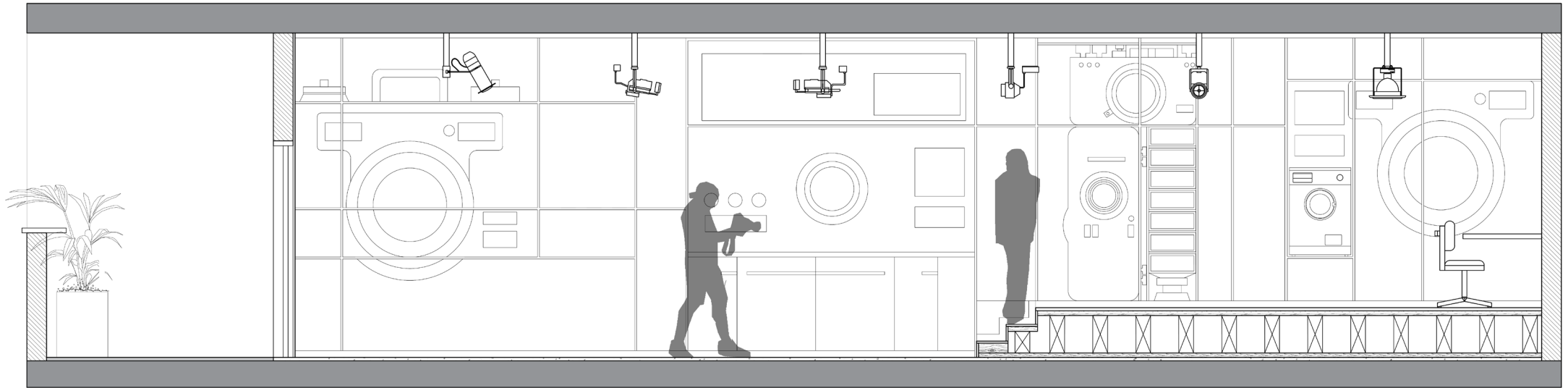


View

kitchen

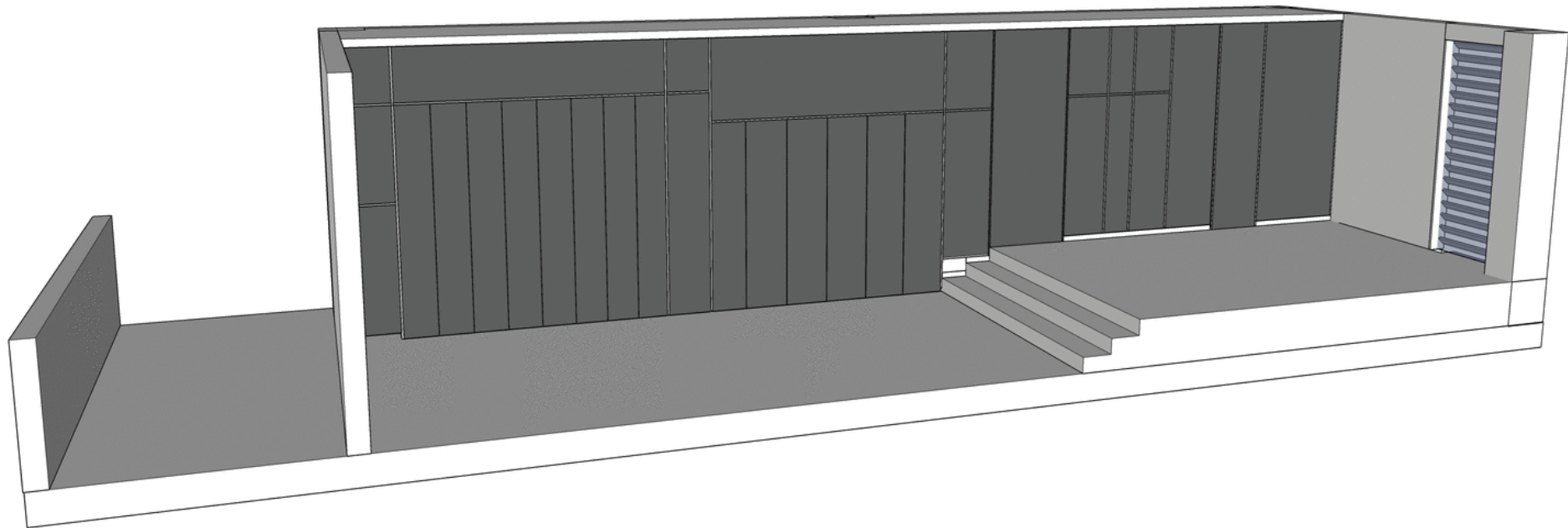


The closet



The closet

Opening and closing the closet- illustration
(View the GIF file)



View

view to the entrance

